



47 Claremont Walk, Gateshead, NE8 1TZ

Offers Over £59,950

Welcome to Claremont Walk, Gateshead! This spacious first-floor flat is located in the central area of Bensham, offering a convenient and vibrant lifestyle. As you step into this property, you are greeted by a living room, perfect for relaxing or entertaining guests. The kitchen is well-equipped, providing a space where you can unleash your culinary skills. With two spacious double bedrooms, there is ample room for a growing family, guests, or even a home office. The bathroom offers a tranquil retreat after a long day, allowing you to unwind and rejuvenate. The uPVC double glazing and gas central heating ensure that you stay warm and comfortable throughout the year, making this flat a cosy haven in any season. Outside, you'll find communal gardens where you can enjoy the fresh air. The communal entrance adds a sense of community to the property, making it a welcoming place to call home.

Don't miss out on the opportunity to make this flat your own and experience the best of what Claremont Walk has to offer. Book a viewing today to avoid disappointment.

COMMUNAL ENTRANCE

FIRST FLOOR APARTMENT HALLWAY

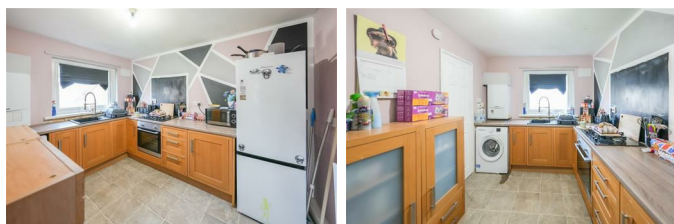
LIVING ROOM

13'6" x 13'1" (4.12m x 3.99m)



KITCHEN

11'10" x 8'0" (3.62m x 2.44m)



MAIN BEDROOM

11'2" x 9'9" (3.41m x 2.98m)



BEDROOM TWO

12'6" x 7'7" (3.83m x 2.32m)



BATHROOM

8'1" x 5'1" (2.48m x 1.57m)



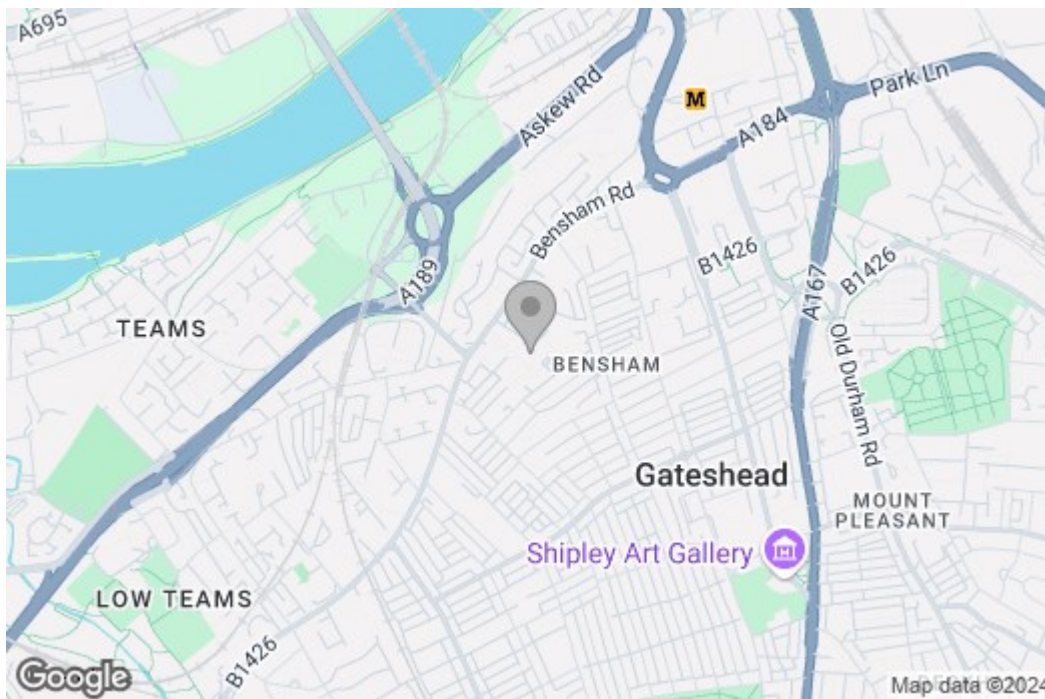
EXTERNAL

Property disclaimer

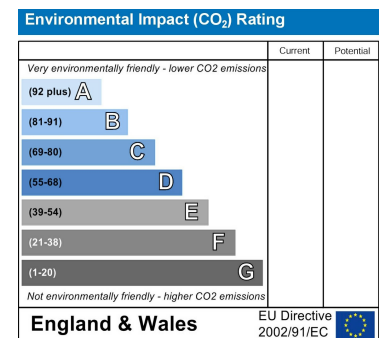
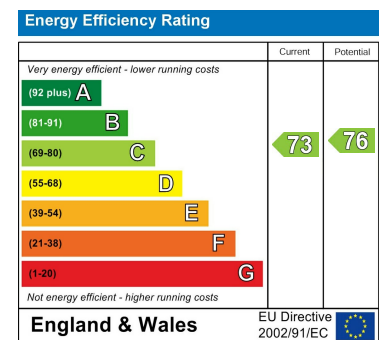
IMPORTANT NOTE TO PURCHASERS: We endeavour to make our sales particulars accurate and reliable, however, they do not constitute or form part of an offer or any contract and none is to be relied upon as statements of representation or fact. The services, systems and appliances listed in this specification have not been tested by us and no guarantee as to their operating ability or efficiency is given. All measurements have been taken as a guide to prospective buyers only, and are not precise. Floor plans where included are not to scale and accuracy is not guaranteed. If you require clarification or further information on any points, please contact us, especially if you are travelling some distance to view. Fixtures and fittings other than those mentioned are to be agreed with the seller. We cannot also confirm at this stage of marketing the tenure of this house.

Floor Plan

Area Map



Energy Efficiency Graph



These particulars, whilst believed to be accurate are set out as a general outline only for guidance and do not constitute any part of an offer or contract, purchaser should not rely on them as statements of representation of fact, but must satisfy themselves by inspection or otherwise as to their accuracy. No person in this firm's employment has the authority to make or give an representation or warranty in respect of the property.