



8 Burnhope Gardens, Gateshead, NE9 7LU

Offers Over £110,000

Located in the charming Burnhope Gardens, this delightful property offers a fantastic opportunity for those seeking a new home. This spacious first-floor flat boasts a double driveway and gardens both at the front and rear, providing ample outdoor space for relaxation and entertaining. Upon entering, you are greeted by a welcoming hallway with stairs to the first floor landing, living/dining room featuring a charming feature fireplace with a living flame gas fire, perfect for cosy evenings with family and friends. The property comprises three generous bedrooms, offering plenty of space for a growing family or guests, along with a well-appointed kitchen and family bathroom. The convenience of a double driveway at the front ensures parking is never an issue, while the westerly facing rear garden is a lovely spot to enjoy the sunshine and unwind. Additionally, the presence of an outside tap adds a practical touch to the outdoor space. Overall, this property presents a wonderful opportunity to own a lovely home in a desirable location. Don't miss out on the chance to make this flat your own and enjoy the comfort and convenience it has to offer.

ENTRANCE HALLWAY

FIRST FLOOR LANDING



LIVING/DINING ROOM

16'4" x 14'10" (4.99m x 4.54m)



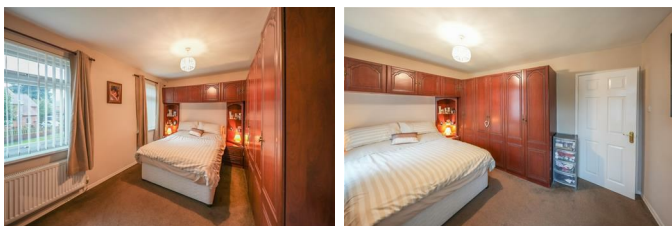
KITCHEN

11'3" x 7'9" (3.44m x 2.38m)



MAIN BEDROOM

13'5" x 9'10" (4.11m x 3.00m)



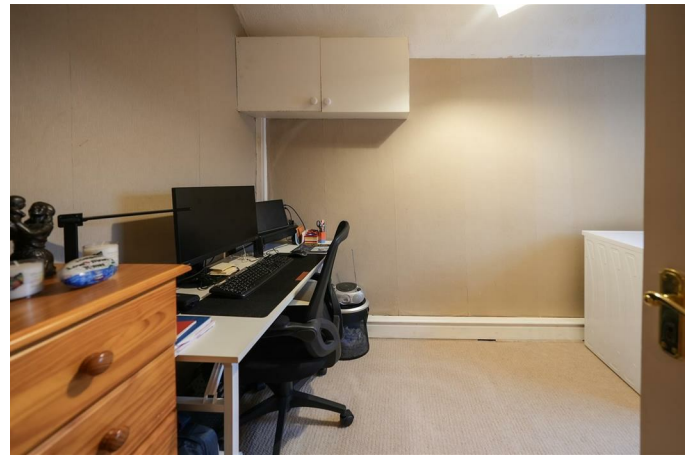
BEDROOM TWO

11'8" x 7'0" (3.56m x 2.14m)



BEDROOM THREE

10'10" x 10'0" (3.31m x 3.05m)



BATHROOM

7'7" x 5'6" (2.33m x 1.70m)



EXTERNAL

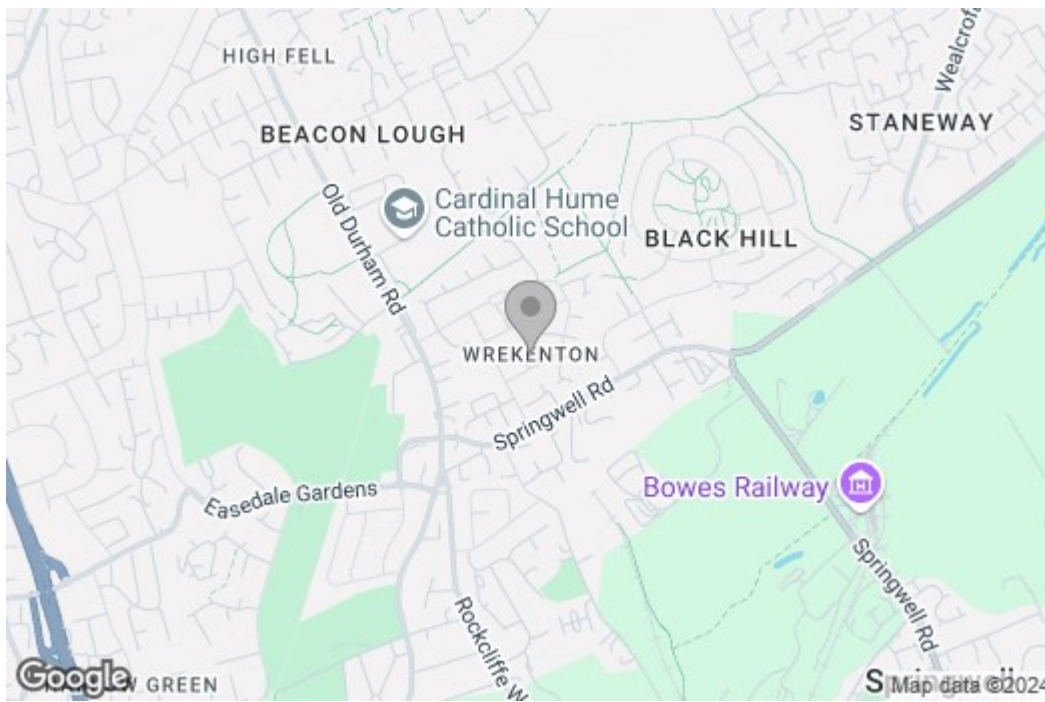


Property disclaimer

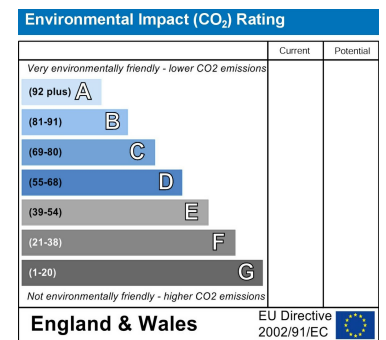
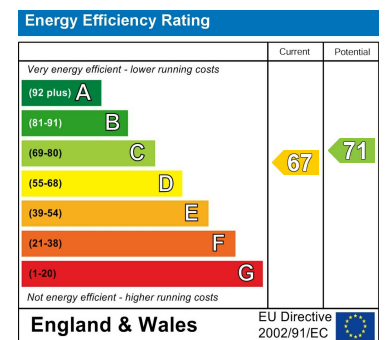
IMPORTANT NOTE TO PURCHASERS: We endeavour to make our sales particulars accurate and reliable, however, they do not constitute or form part of an offer or any contract and none is to be relied upon as statements of representation or fact. The services, systems and appliances listed in this specification have not been tested by us and no guarantee as to their operating ability or efficiency is given. All measurements have been taken as a guide to prospective buyers only, and are not precise. Floor plans where included are not to scale and accuracy is not guaranteed. If you require clarification or further information on any points, please contact us, especially if you are travelling some distance to view. Fixtures and fittings other than those mentioned are to be agreed with the seller. We cannot also confirm at this stage of marketing the tenure of this house.

Floor Plan

Area Map



Energy Efficiency Graph



These particulars, whilst believed to be accurate are set out as a general outline only for guidance and do not constitute any part of an offer or contract, purchaser should not rely on them as statements of representation of fact, but must satisfy themselves by inspection or otherwise as to their accuracy. No person in this firm's employment has the authority to make or give an representation or warranty in respect of the property.