



50 Ovetto Gardens, Gateshead, NE8 3JH

£95,000

Welcome to this charming second-floor apartment located in the popular Ovetto Gardens, Gateshead. This delightful property boasts a spacious living/dining room with a Juliet balcony, offering a lovely outlook and seamless access into the well-equipped kitchen complete with integrated oven and fridge/freezer. With one main bedroom and an additional good-sized bedroom, this flat is perfect for a small family or professionals looking for extra space. The property's location is ideal for commuters, has one allotted parking space and is situated next to a cycle path and close to local amenities, making daily life convenient and enjoyable.

Imagine starting your day with a cup of tea on the balcony, soaking in the peaceful surroundings before heading out for a leisurely bike ride along the nearby cycle path. This apartment offers not just a place to live, but a lifestyle that combines comfort and convenience effortlessly.

Don't miss out on the opportunity to make Ovetto Gardens your new home. Book a viewing today.

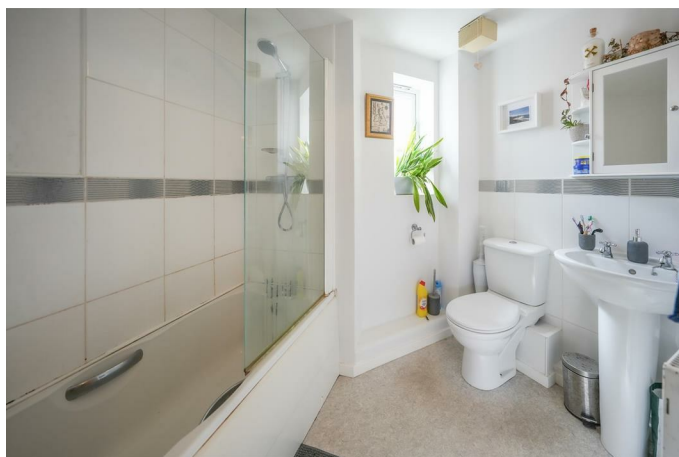
COMMUNAL ENTRANCE HALL

SECOND FLOOR APARTMENT HALLWAY



BATHROOM

8'6" x 6'10" (2.61m x 2.09m)



BEDROOM ONE

10'9" x 10'9" (3.30m x 3.28m)



BEDROOM TWO

10'10" x 7'4" (3.31m x 2.26m)



LIVING/DINING ROOM

23'9" x 12'1" (7.25m x 3.70m)



KITCHEN

11'6" x 6'10" (3.53m x 2.09m)



EXTERNAL

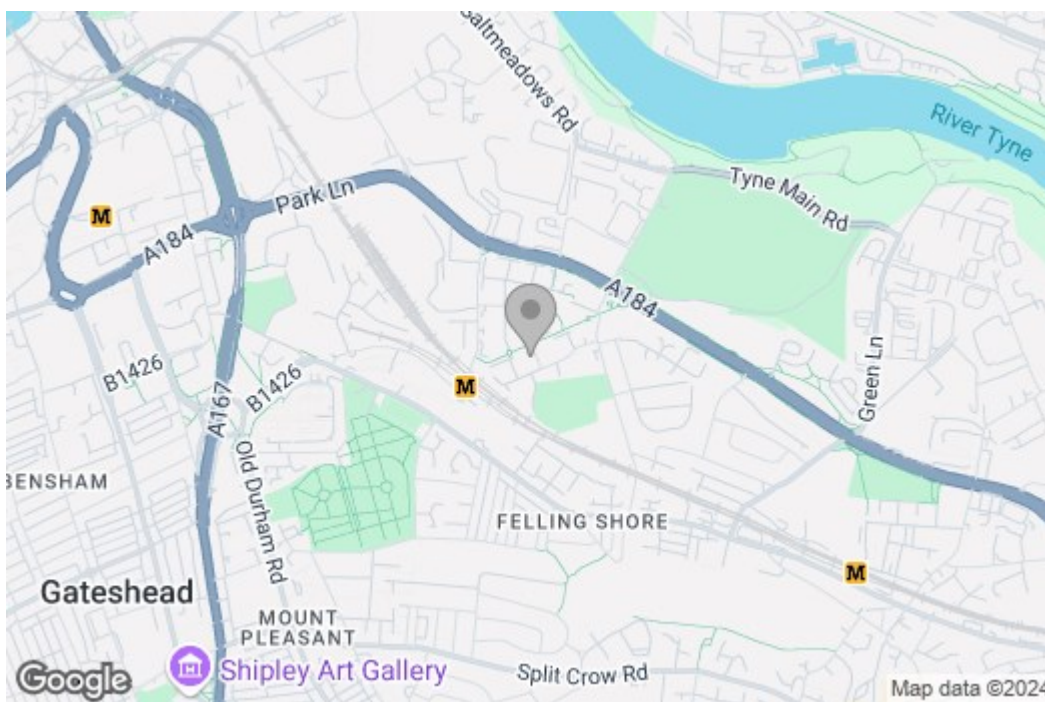
Property disclaimer

IMPORTANT NOTE TO PURCHASERS: We endeavour to make our sales particulars accurate and reliable, however, they do not constitute or form part of an offer or any contract and none is to be relied upon as statements of representation or fact. The services, systems and appliances listed in this specification have not been tested by us and no guarantee as to their operating ability or efficiency is given. All measurements have been taken as a guide to prospective buyers only, and are not precise. Floor plans where included are not to scale and accuracy is not guaranteed. If you require clarification or further information on any points, please contact us,

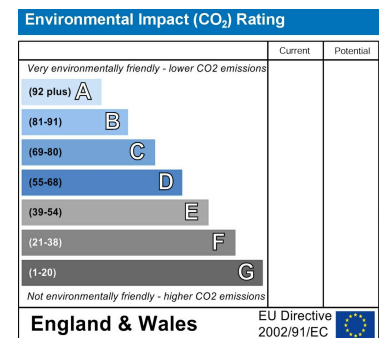
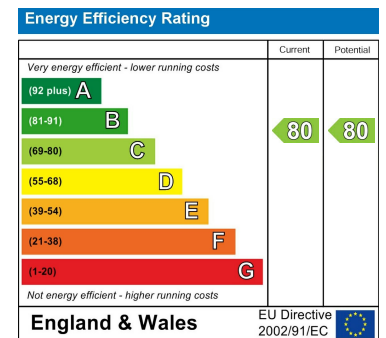
especially if you are travelling some distance to view. Fixtures and fittings other than those mentioned are to be agreed with the seller. We cannot also confirm at this stage of marketing the tenure of this house.

Floor Plan

Area Map



Energy Efficiency Graph



These particulars, whilst believed to be accurate are set out as a general outline only for guidance and do not constitute any part of an offer or contract, purchaser should not rely on them as statements of representation of fact, but must satisfy themselves by inspection or otherwise as to their accuracy. No person in this firm's employment has the authority to make or give an representation or warranty in respect of the property.