



161 Durham Road, Gateshead, NE8 4AR

£239,950

This Victorian terraced house is a true gem waiting to be discovered. As you step inside, you are greeted by a charming entrance vestibule and hallway, setting the tone for the elegance that awaits within. The property boasts one reception room, perfect for entertaining guests or simply unwinding after a long day. Imagine evenings by the inglenook in the living room, basking in the warm glow of the log-burning stove. The dining room, complete with an open fire surround, offers a delightful space for enjoying meals with loved ones. The kitchen, tastefully re-fitted by the current owners, features integrated appliances including an oven and dishwasher, making meal preparation a breeze. Upstairs, the first floor accommodates two generously sized bedrooms and a family bathroom with a luxurious 4-piece suite. Ascend to the second floor to discover two additional bedrooms, providing ample space for a growing family or visiting guests. Outside, a garage door at the rear of the property offers convenient off-street parking, a rare find in such a desirable location. The low-maintenance patio is perfect for al fresco dining or simply soaking up the sunshine on lazy weekends. With a great outlook to the front overlooking a small park, this property exudes charm and character at every turn. Don't miss this opportunity to own a fabulous home that seamlessly blends Victorian elegance with modern comforts.

ENTRANCE HALLWAY



FIRST FLOOR LANDING

LIVING ROOM

17'6" into bay x 13'3" into alcove (5.34m into bay x 4.04m into alcove)



DINING ROOM

14'7" x 10'7" (4.45m x 3.23m)



KITCHEN

12'9" x 9'5" (3.91m x 2.89m)



FIRST FLOOR LANDING



MAIN BEDROOM

17'2" x 14'4" (5.24m x 4.37m)



BEDROOM TWO

14'6" x 10'10" into alcoves (4.43m x 3.32m into alcoves)

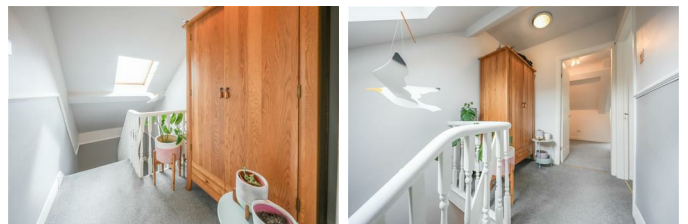


FAMILY BATHROOM

12'6" x 9'9" (3.83m x 2.98m)



SECOND FLOOR LANDING



BEDROOM THREE

15'10" x 12'9" into window (4.84m x 3.91m into window)

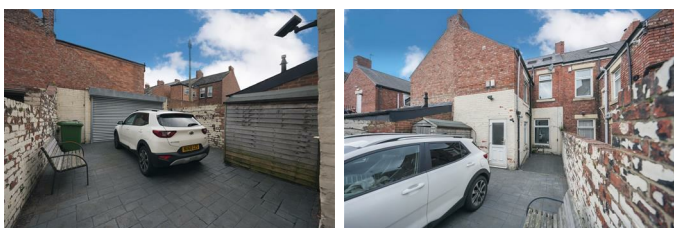


BEDROOM FOUR

9'3" x 8'5" (2.83m x 2.59m)



EXTERNAL



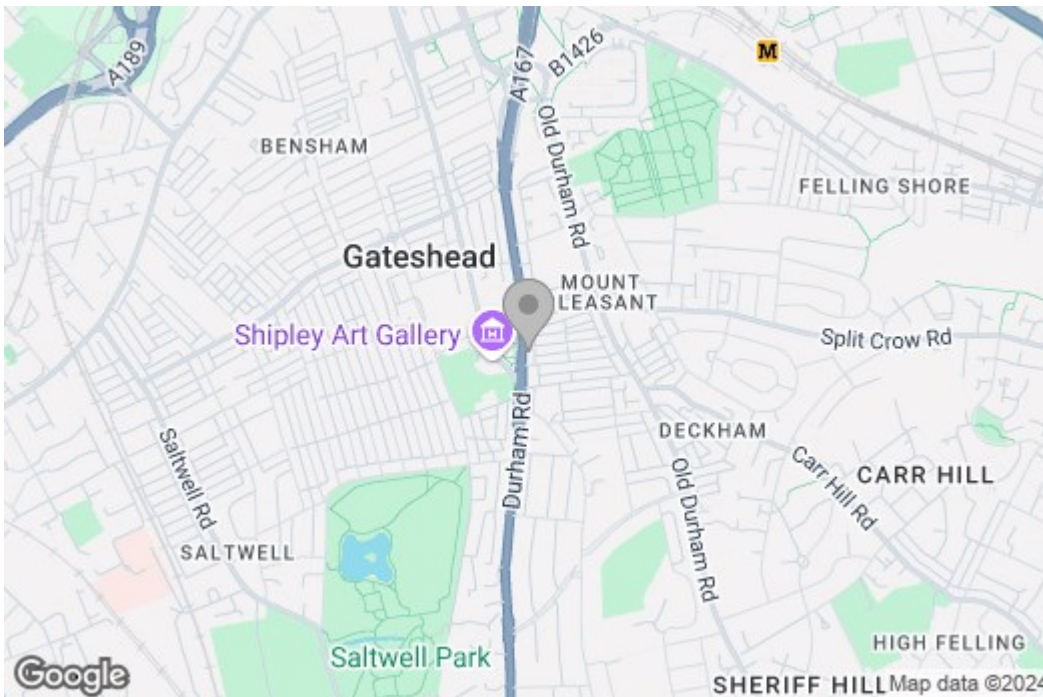
Property disclaimer

IMPORTANT NOTE TO PURCHASERS: We endeavour to make our sales particulars accurate and reliable, however, they do not constitute or form part of an offer or any contract and none is to be relied upon as statements of representation or fact. The services, systems and appliances listed in this specification have not been tested by us and no guarantee as to their operating ability or efficiency is given. All measurements have been taken as a guide to prospective buyers only, and are not precise. Floor plans where included are not to scale and accuracy is not guaranteed. If you require clarification or further information on any points, please contact us,

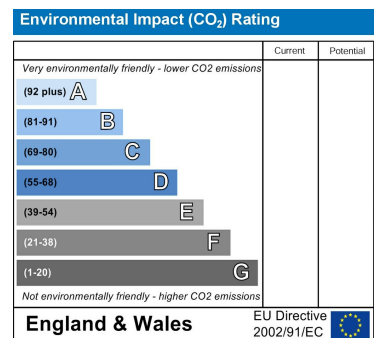
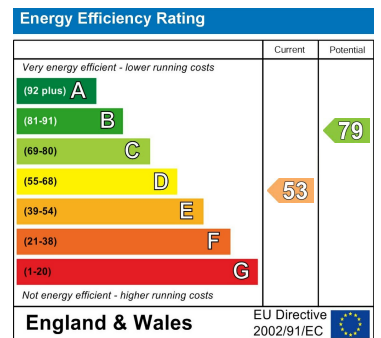
especially if you are travelling some distance to view. Fixtures and fittings other than those mentioned are to be agreed with the seller. We cannot also confirm at this stage of marketing the tenure of this house.

Floor Plan

Area Map



Energy Efficiency Graph



These particulars, whilst believed to be accurate are set out as a general outline only for guidance and do not constitute any part of an offer or contract, purchaser should not rely on them as statements of representation of fact, but must satisfy themselves by inspection or otherwise as to their accuracy. No person in this firm's employment has the authority to make or give a representation or warranty in respect of the property.