



4 Tamarisk Way, Gateshead, NE9 6GD

£199,950

Located on the charming Tamarisk Way, this delightful semi-detached house is a true gem waiting to be discovered. As you step inside, you are greeted by a warm and inviting atmosphere with Karndean flooring leading you through the hallway. The living room boasts a beautiful bay window, allowing natural light to flood the space, creating a cosy setting for relaxing evenings. With three bedrooms, this property offers ample space for a growing family or those in need of a home office. The main bedroom is a true sanctuary, complete with a lovely shower room for your convenience. The dining kitchen is a highlight of this home, featuring an integrated oven, dishwasher, and washing machine, making meal preparation a breeze. The patio doors open into the garden room, seamlessly blending indoor and outdoor living. Outside, the wraparound garden provides a perfect setting for al fresco dining or simply enjoying the fresh air. The garage and driveway offer ample parking space, ensuring convenience for you and your guests. This property truly embodies the essence of a fantastic family home, offering both comfort and practicality in one package. Don't miss out on the opportunity to make this house your own and create lasting memories in this wonderful space.

ENTRANCE HALLWAY

GROUND FLOOR W/C



LIVING ROOM

13'7" x 12'11" (4.15m x 3.96m)



DINING KITCHEN

16'2" x 8'7" (4.94m x 2.64)



GARDEN ROOM

10'10" x 8'7" (3.31m x 2.64m)



FIRST FLOOR LANDING

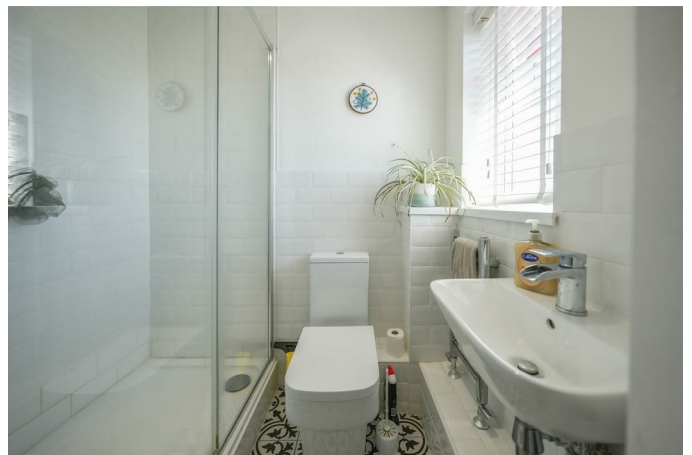


MAIN BEDROOM

11'10" x 8'3" (3.63m x 2.53m)

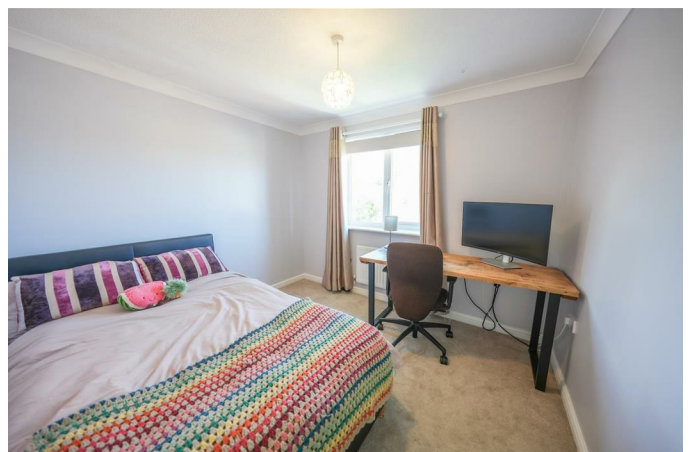


EN-SUITE



BEDROOM TWO

9'10" x 9'0" (3.00m x 2.75m)



BEDROOM THREE

9'0" x 6'2" (2.75m x 1.88m)



Property disclaimer

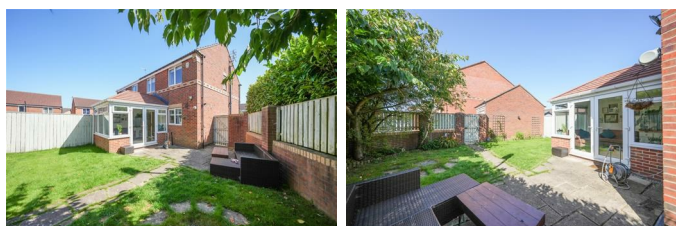
IMPORTANT NOTE TO PURCHASERS: We endeavour to make our sales particulars accurate and reliable, however, they do not constitute or form part of an offer or any contract and none is to be relied upon as statements of representation or fact. The services, systems and appliances listed in this specification have not been tested by us and no guarantee as to their operating ability or efficiency is given. All measurements have been taken as a guide to prospective buyers only, and are not precise. Floor plans where included are not to scale and accuracy is not guaranteed. If you require clarification or further information on any points, please contact us, especially if you are travelling some distance to view. Fixtures and fittings other than those mentioned are to be agreed with the seller. We cannot also confirm at this stage of marketing the tenure of this house.

FAMILY BATHROOM

7'1" x 5'7" (2.17m x 1.72m)



EXTERNAL

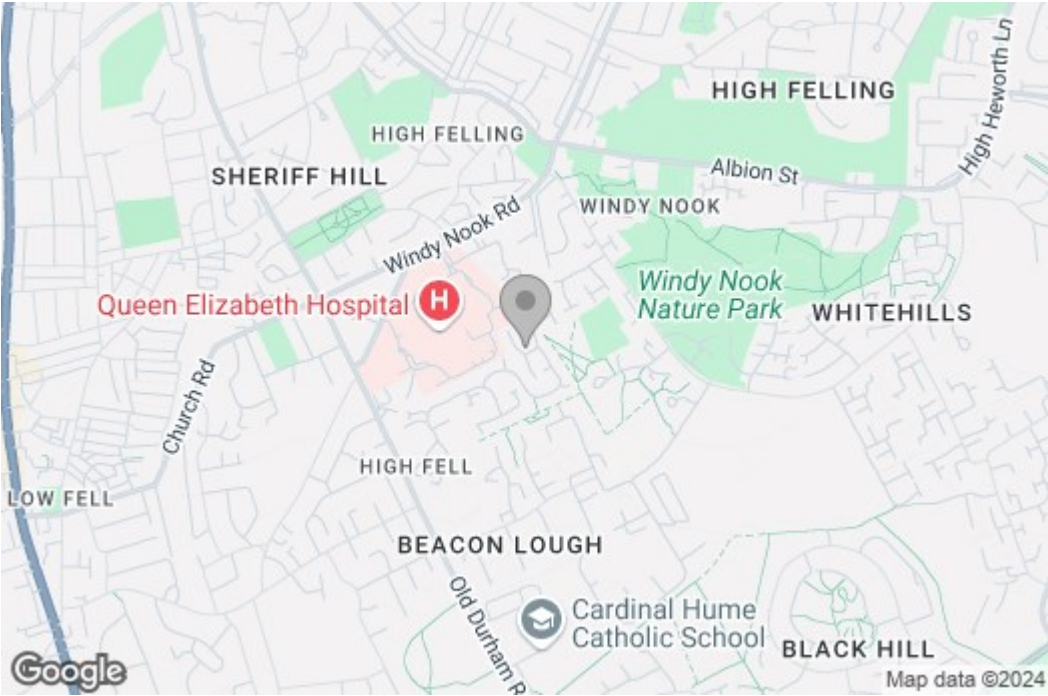


GARAGE



Floor Plan

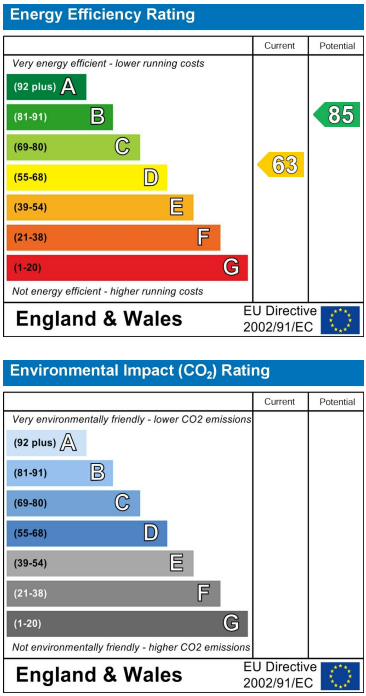
Area Map



These particulars, whilst believed to be accurate are set out as a general outline only for guidance an do not constitute any part of an offer or contract, purchaser should not rely on them as statements of representation of fact, but must satisfy themselves by inspection or otherwise as to their accuracy. No person in this firms employment has the authority to make or give an representation or warranty in respect of the property.

429 Durham Road
Gateshead
NE9 5AN

Energy Efficiency Graph



0191 4874211
home@gordon-brown.co.uk
www.gordon-brown.co.uk