



10 The Willows, Gateshead, NE10 8BW

Offers Over £110,000

This fantastic first-floor apartment is a gem waiting to be discovered. Perfect for those who appreciate a central location with excellent commuting and transport links, this property offers convenience and comfort. As you step into the communal entrance and make your way up the stairs, you'll be greeted by a charming apartment hallway with a convenient walk-in storage cupboard. The living room is a bright and inviting space, complete with a Juliet balcony that offers a lovely outlook. The open access into the kitchen, which features an integrated oven and hob, makes entertaining a breeze. This apartment boasts two bedrooms, both with built-in wardrobes for ample storage. The main bedroom even comes with the added luxury of an en-suite shower room, adding a touch of elegance to your daily routine. The second bedroom is equally well-appointed, ensuring comfort for all residents. In addition to the en-suite, there is a modern bathroom for added convenience. Outside, you can enjoy the communal gardens, perfect for a leisurely stroll or a relaxing afternoon. With allocated parking, you'll never have to worry about finding a space after a long day. The vendor, due to emigration, is offering this property at a sensibly priced value, with negotiable extras to sweeten the deal. Don't miss out on this opportunity to own a piece of tranquillity in a bustling location. The Willows is calling - will you answer?

COMMUNAL ENTRANCE

FIRST FLOOR APARTMENT HALLWAY



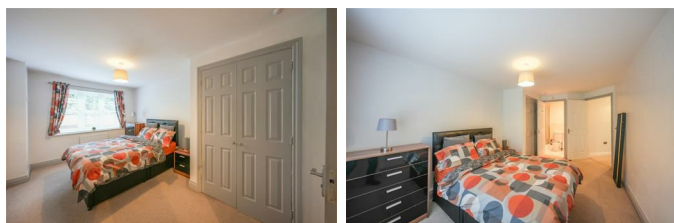
BEDROOM TWO

12'3" to robes x 6'10" (3.74m to robes x 2.10m)



MAIN BEDROOM

15'7" x 9'8" (4.75m x 2.95m)

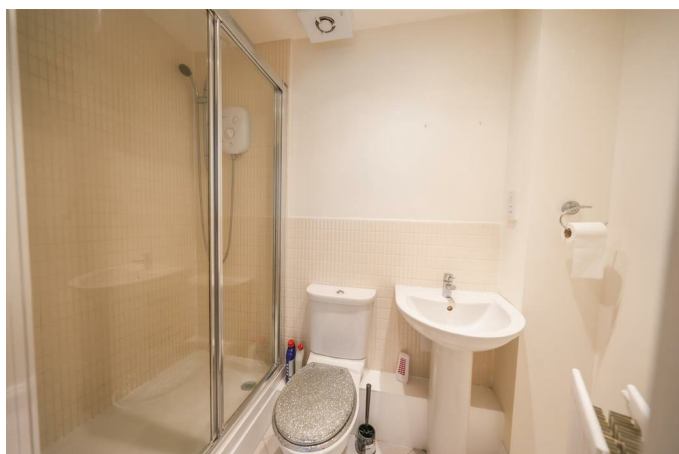


BATHROOM

5'8" x 5'7" (1.73m x 1.71m)



EN-SUITE



LIVING ROOM

18'8" x 15'3" (5.71m x 4.66m)

KITCHEN

7'8" x 7'4" (2.36m x 2.25m)



EXTERNAL

Property disclaimer

IMPORTANT NOTE TO PURCHASERS: We endeavour to make our sales particulars accurate and reliable, however, they do not constitute or form part of an offer or any contract and none is to be relied upon as statements of representation or fact. The services, systems and appliances listed in this specification have not been tested by us and no guarantee as to their operating ability or efficiency is given. All measurements have been taken as a guide to prospective buyers only, and are not precise. Floor plans where included are not to scale and accuracy is not guaranteed. If you require clarification or further information on any points, please contact us, especially if you are travelling some distance to view. Fixtures and fittings other than those mentioned are to be agreed with the seller. We cannot also confirm at this stage of marketing the tenure of this house.

MATERIAL INFORMATION

FLOOD RISK - Low risk

LOCAL AUTHORITY - Gateshead

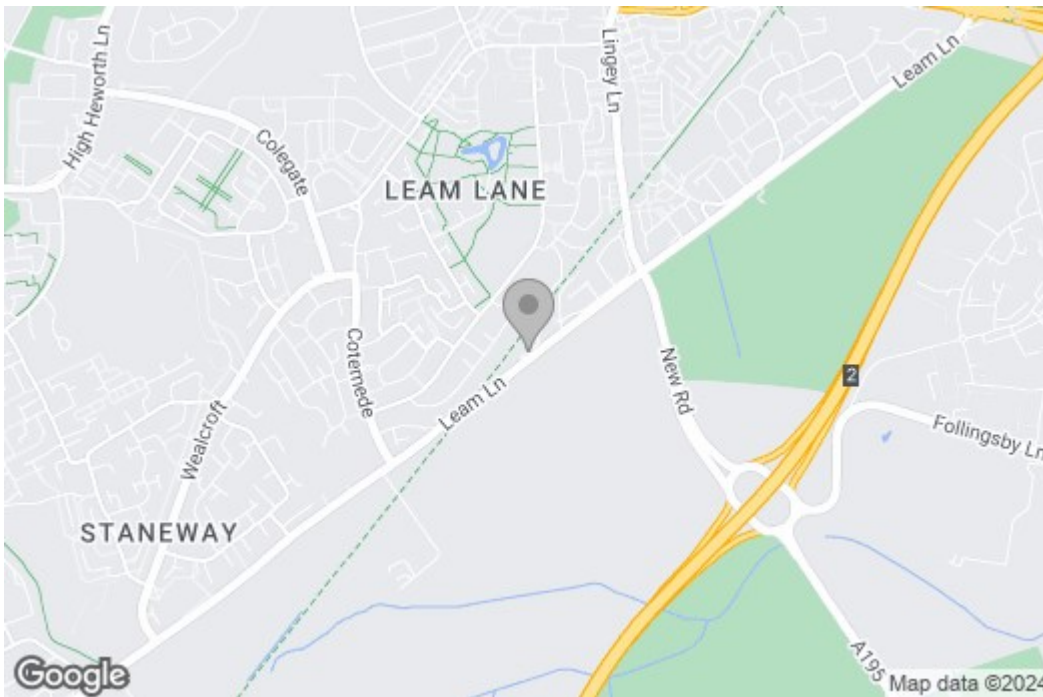
BT & SKY AVAILABLE - yes

BROADBAND - Basic - Superfast - Ultrafast

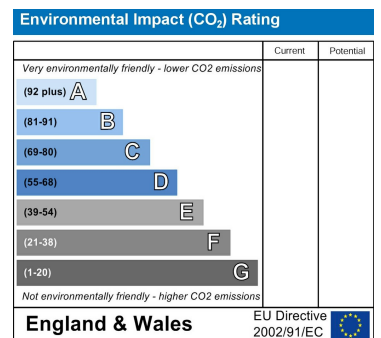
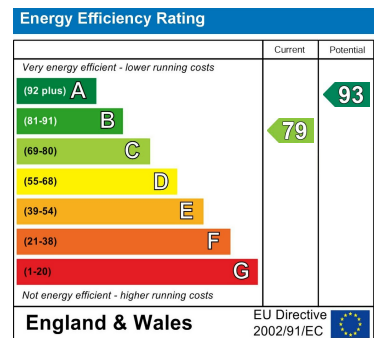
MOBILE COVERAGE - EE, Vodafone, Three, O2

Floor Plan

Area Map



Energy Efficiency Graph



These particulars, whilst believed to be accurate are set out as a general outline only for guidance and do not constitute any part of an offer or contract, purchaser should not rely on them as statements of representation of fact, but must satisfy themselves by inspection or otherwise as to their accuracy. No person in this firm's employment has the authority to make or give an representation or warranty in respect of the property.