



45 Forster Court, Gateshead, NE9 6HZ

Offers Over £99,950

Welcome to this charming top floor apartment located in the heart of Low Fell. This lovely apartment boasts a desirable and central location, making it a perfect choice for those seeking convenience and comfort. As you step inside, you are greeted by a warm and inviting living space, complete with one reception room that seamlessly combines the living and dining areas. The large windows offer a lovely outlook and views, creating a bright and airy atmosphere that is perfect for relaxing or entertaining guests. The property features two double bedrooms, one of which comes with fitted wardrobes providing ample storage space. The bathroom is well-appointed and offers all the necessary amenities for your daily needs. The kitchen is equipped with an integrated oven, making meal preparation a breeze. The flat is warmed via electric heating, ensuring you stay comfortable throughout the year and benefits from upvc double glazing to the windows. One of the standout features of this property is the ample parking available in a private car park, providing you with convenience and peace of mind for your vehicle. Don't miss the opportunity to make this delightful flat your new home. With its convenient location, comfortable living spaces, and charming views, this property is sure to capture your heart. Contact us today to arrange a viewing and experience the beauty of Low Fell living for yourself.

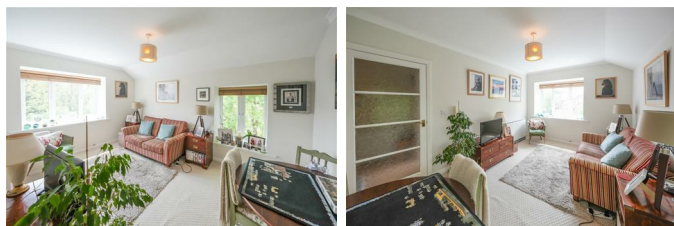
COMMUNAL ENTRANCE HALLWAY

THIRD FLOOR APARTMENT HALLWAY



LIVING ROOM/DINING ROOM

14'9" x 9'9" (4.50m x 2.99m)



KITCHEN

13'0" x 5'2" (3.97m x 1.60m)



BEDROOM ONE

11'11" x 9'6" (3.65m x 2.90m)



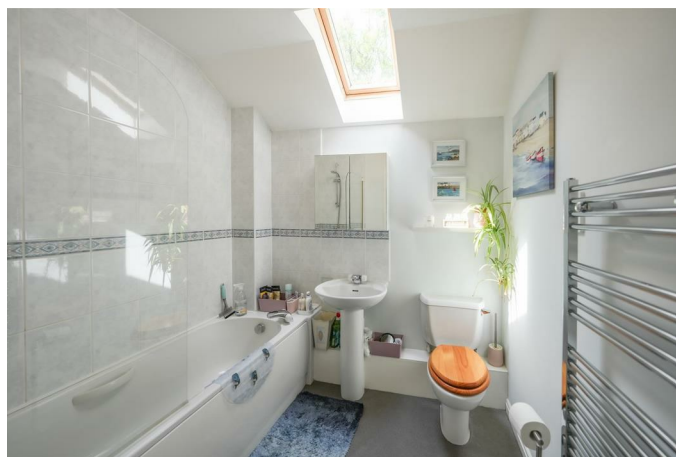
BEDROOM TWO

10'3" x 7'9" (3.13m x 2.38m)



BATHROOM

7'2" x 6'11" (2.19m x 2.11m)



EXTERNAL

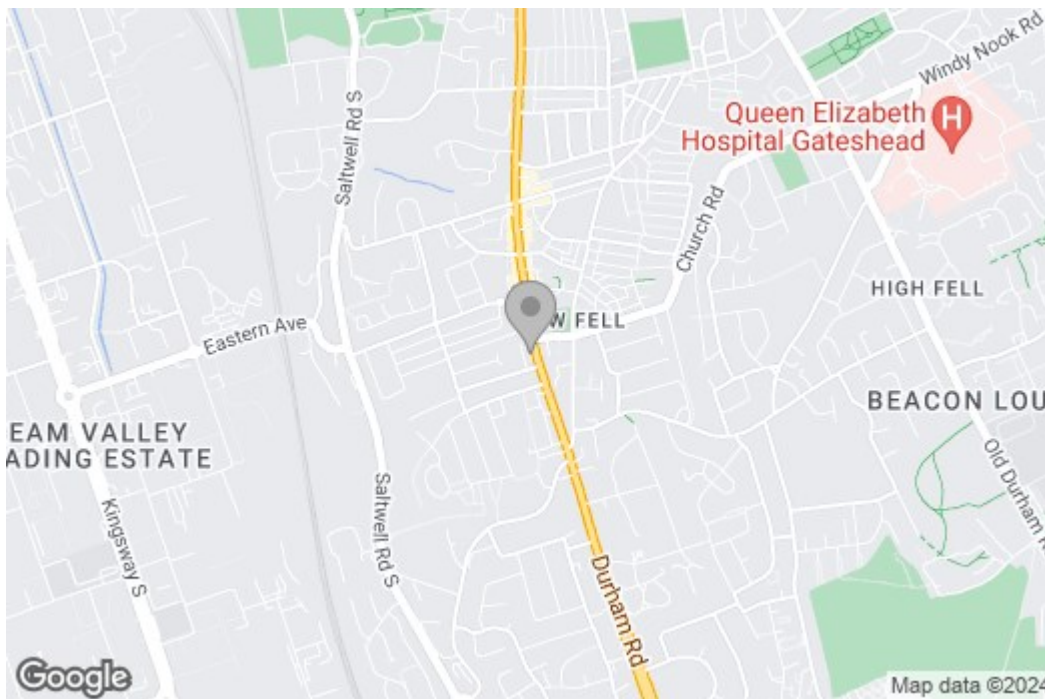
Property disclaimer

IMPORTANT NOTE TO PURCHASERS: We endeavour to make our sales particulars accurate and reliable, however, they do not constitute or form part of an offer or any contract and none is to be relied upon as statements of representation or fact. The services, systems and appliances listed in this specification have not been tested by us and no guarantee as to their operating ability or efficiency is given. All measurements have been taken as a guide to prospective buyers only, and are not precise. Floor plans where included are not to scale and accuracy is not guaranteed. If you require clarification or further information on any points, please contact us, especially if you are travelling some distance to view. Fixtures and fittings other than those mentioned are to be agreed with the seller. We cannot also confirm at this stage of marketing the tenure of this house.

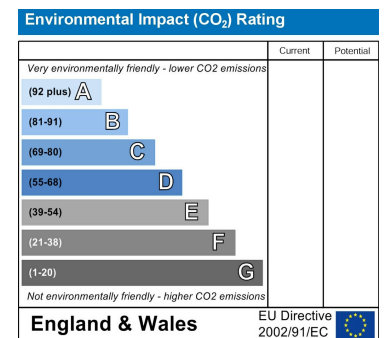
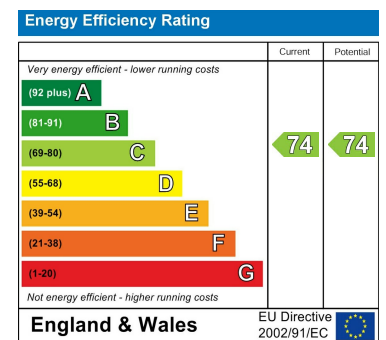
MATERIAL INFORMATION

Floor Plan

Area Map



Energy Efficiency Graph



These particulars, whilst believed to be accurate are set out as a general outline only for guidance and do not constitute any part of an offer or contract, purchaser should not rely on them as statements of representation of fact, but must satisfy themselves by inspection or otherwise as to their accuracy. No person in this firm's employment has the authority to make or give a representation or warranty in respect of the property.