

13 Helmsley Green, Gateshead, NE9 7DG

Offers Over £99,950

Situated in the sought-after location of Helmsley Green in Gateshead, this charming semi-detached house is a true gem. Boasting a spacious living room, an internal hallway with ample storage, and a delightful dining kitchen complete with a free-standing cooker, this property offers comfort and convenience. The first floor features a main bedroom with built-in wardrobes, two additional well-proportioned bedrooms, and a bathroom. The rear outlook from the bedrooms provides a pleasant view, adding to the appeal of this lovely home.

With gardens both to the front and rear, there is ample outdoor space to enjoy and entertain. The property being freehold adds to the appeal, offering security and peace of mind to potential buyers. Don't miss the opportunity to make this house your home in the heart of Helmsley Green.

ENTRANCE HALLWAY

LIVING ROOM

17'2" x 9'9" (5.24m x 2.99m)



BEDROOM TWO

10'2" x 10'2" (3.12m x 3.10m)



INTERNAL HALLWAY

DINING KITCHEN

17'1" x 10'0" (5.22m x 3.07m)



BEDROOM THREE

10'3" x 6'9" (3.14m x 2.08m)



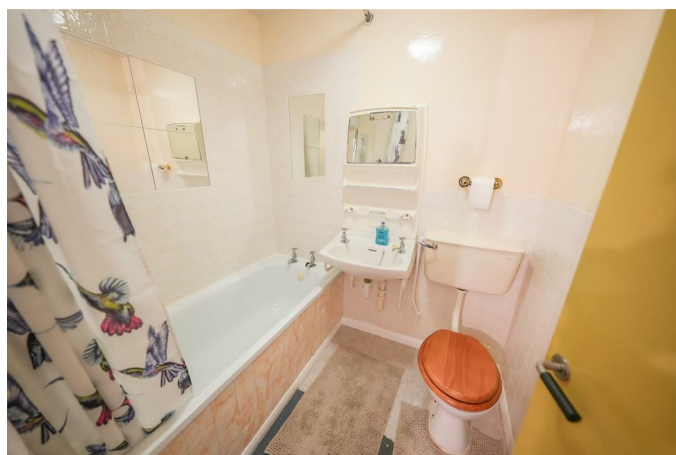
GROUND FLOOR W/C

FIRST FLOOR LANDING



FAMILY BATHROOM

6'1" x 5'5" (1.87m x 1.67m)



MAIN BEDROOM

17'3" x 10'6" (5.27m x 3.21m)



EXTERNAL

MATERIAL INFORMATION

FLOOD RISK - Low risk

LOCAL AUTHORITY - Gateshead

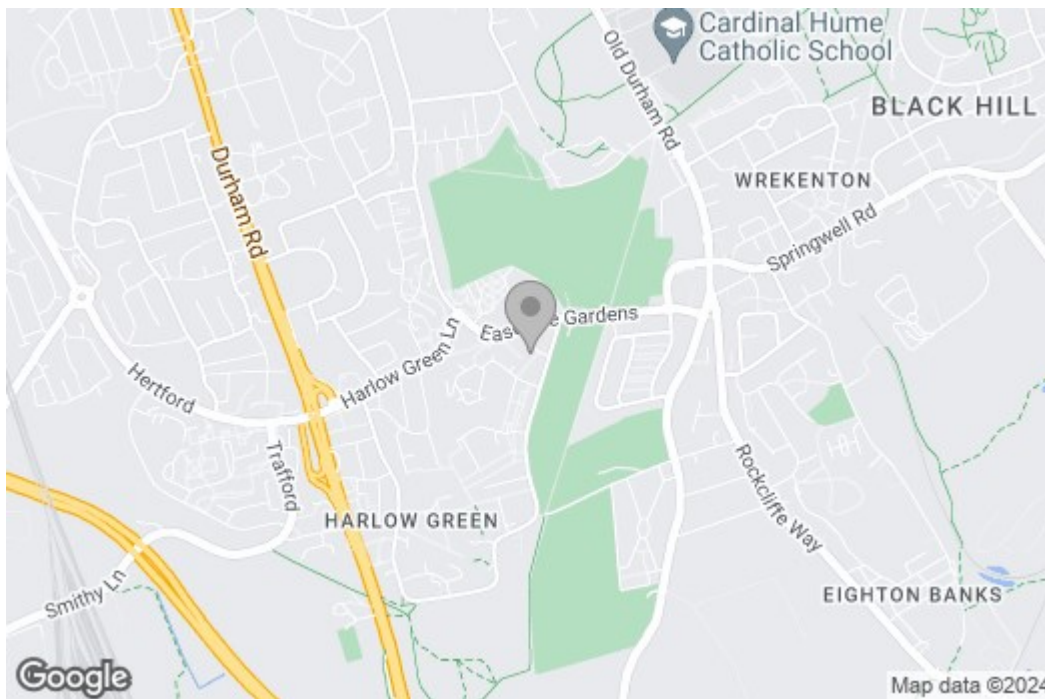
BT & SKY AVAILABLE - yes

BROADBAND - Basic - Superfast - Ultrafast

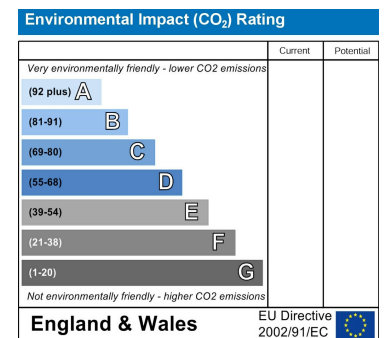
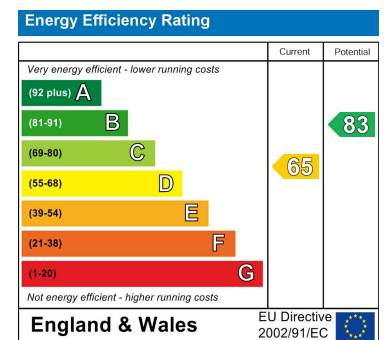
MOBILE COVERAGE - EE, O2

Floor Plan

Area Map



Energy Efficiency Graph



These particulars, whilst believed to be accurate are set out as a general outline only for guidance and do not constitute any part of an offer or contract, purchaser should not rely on them as statements of representation of fact, but must satisfy themselves by inspection or otherwise as to their accuracy. No person in this firm's employment has the authority to make or give a representation or warranty in respect of the property.