



6 Cyprus Gardens, Gateshead, NE9 5UL

Offers Over £129,950

Welcome to Cyprus Gardens in the heart of Gateshead! This charming flat offers a delightful living experience in the sought-after area of Low Fell. As you step into this ground floor property, you are greeted by a spacious lounge featuring a beautiful bay window, perfect for enjoying the natural light that floods the room. The kitchen is equipped with an integrated oven, making cooking a breeze. With two generously sized double bedrooms, including the main bedroom with fitted wardrobes, there is ample space for relaxation and storage. The bathroom provides a comfortable and convenient space for your daily routines. One of the highlights of this property is the lovely garden at the rear, offering a tranquil outdoor space where you can unwind or entertain guests. Imagine enjoying a cup of tea in the morning or hosting a barbecue in the evenings in this charming garden setting.

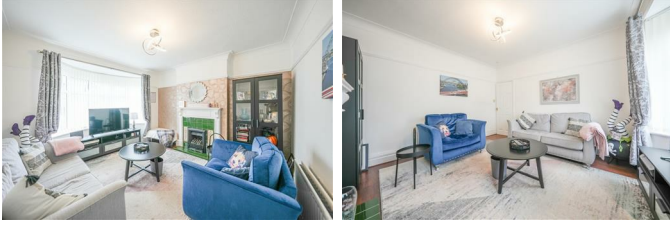
Located in the vibrant area of Low Fell, this flat is surrounded by a host of amenities, including shops, restaurants, and parks, ensuring that you have everything you need right at your doorstep. With excellent transport links nearby, you can easily explore the wider Gateshead area and beyond.

Don't miss out on the opportunity to make this flat your new home. Contact us today to arrange a viewing and experience the comfort and convenience that Cyprus Gardens has to offer.

ENTRANCE HALLWAY

LIVING ROOM

15'3" x 12'6" (4.65m x 3.83m)



KITCHEN

9'8" x 8'0" (2.95m x 2.45m)



BATHROOM W/C



BEDROOM ONE

12'11" x 8'9" (3.94m x 2.67m)



BEDROOM TWO

9'4" x 8'3" (2.87m x 2.52m)



EXTERNAL



MATERIAL INFORMATION

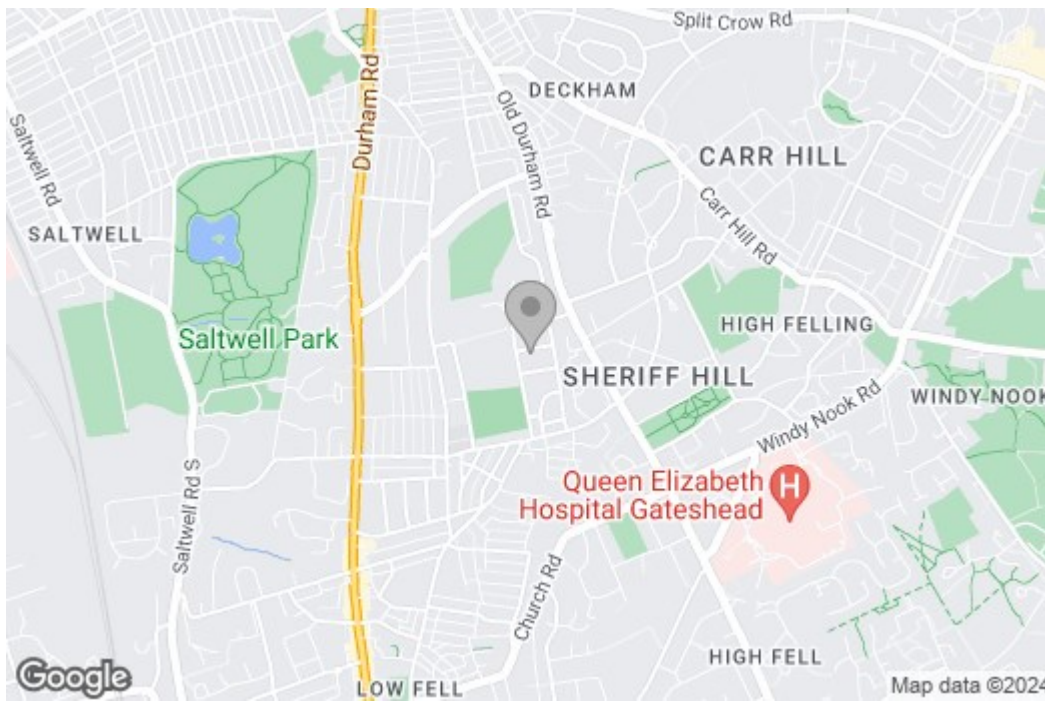
FLOOD RISK -
LOCAL AUTHORITY -
BROADBAND -
MOBILE COVERAGE -
TV-

Property disclaimer

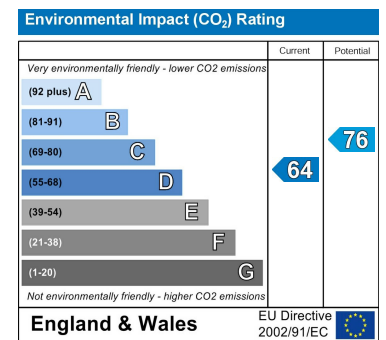
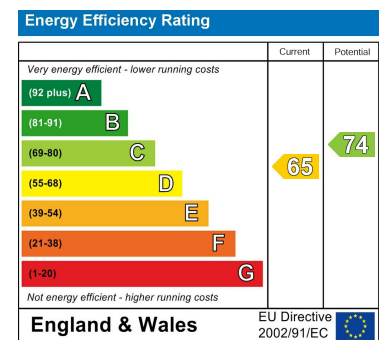
IMPORTANT NOTE TO PURCHASERS: We endeavour to make our sales particulars accurate and reliable, however, they do not constitute or form part of an offer or any contract and none is to be relied upon as statements of representation or fact. The services, systems and appliances listed in this specification have not been tested by us and no guarantee as to their operating ability or efficiency is given. All measurements have been taken as a guide to prospective buyers only, and are not precise. Floor plans where included are not to scale and accuracy is not guaranteed. If you require clarification or further information on any points, please contact us, especially if you are travelling some distance to view. Fixtures and fittings other than those mentioned are to be agreed with the seller. We cannot also confirm at this stage of marketing the tenure of this house.

Floor Plan

Area Map



Energy Efficiency Graph



These particulars, whilst believed to be accurate are set out as a general outline only for guidance and do not constitute any part of an offer or contract, purchaser should not rely on them as statements of representation of fact, but must satisfy themselves by inspection or otherwise as to their accuracy. No person in this firm's employment has the authority to make or give an representation or warranty in respect of the property.