



## 5 Hutton Terrace, Gateshead, NE9 6AN

Offers Over £179,950

This charming two bedroom terraced house is the perfect property for first-time buyers looking for a modern and cosy home. As you enter the house, you are greeted by a warm and inviting lounge that is perfect for relaxing. The lounge exudes a cosy atmosphere, making it an ideal space to unwind after a long day. The open-plan kitchen diner with feature island seating and wall paneling is both stylish and functional, providing ample space for cooking, dining, and socializing.

The house boasts two double bedrooms, each offering a comfortable and private retreat. The stylish bathroom is beautifully appointed with modern fixtures and fittings. Outside, the property benefits from a private rear yard that can be used for off street parking if required. Throughout the property, the modern interior design creates a fresh and contemporary feel, making the house feel welcoming and up-to-date. With its combination of cosy living spaces, stylish features, and practical layout, this two bedroom terraced house is the perfect home for first-time buyers looking for a comfortable and modern living environment. early Viewing Advised. FREEHOLD.

## RECEPTION HALLWAY



## BEDROOM TWO

11'0" x 9'6" (3.37 x 2.90)



## LOUNGE

12'8" x 10'4" (3.87 x 3.17)



## BATHROOM / W.C.



## KITCHEN/ DINING ROOM

14'3" x 12'0" (4.36 x 3.66)



## EXTERNAL

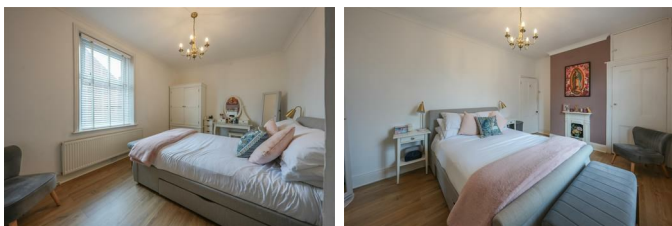


## ACCOMMODATION FIRST FLOOR



## BEDROOM ONE

16'2" x 10'5" (4.94 x 3.18)

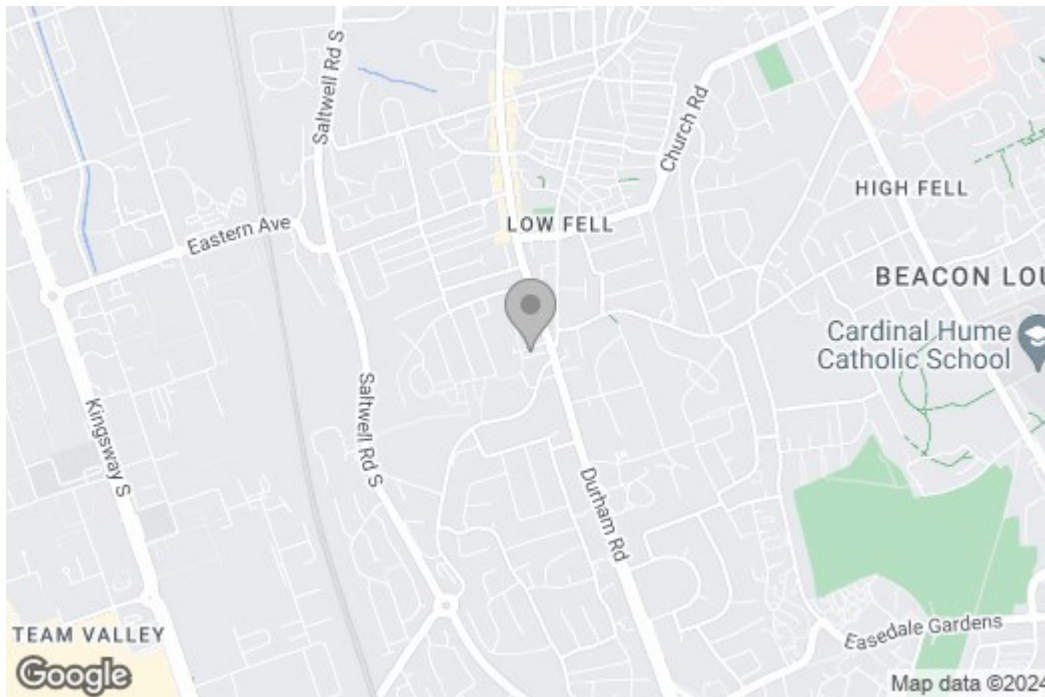


## Property disclaimer

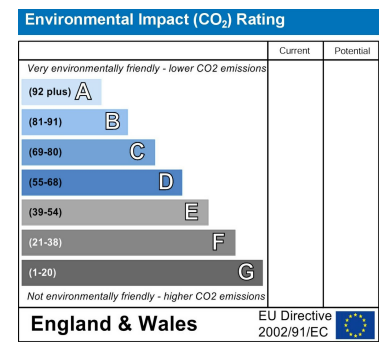
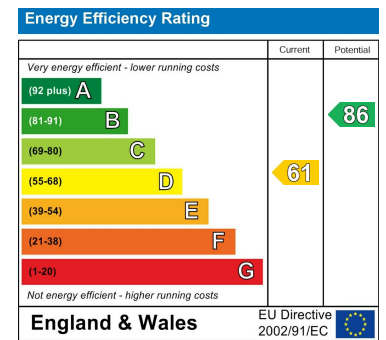
**IMPORTANT NOTE TO PURCHASERS:** We endeavour to make our sales particulars accurate and reliable, however, they do not constitute or form part of an offer or any contract and none is to be relied upon as statements of representation or fact. The services, systems and appliances listed in this specification have not been tested by us and no guarantee as to their operating ability or efficiency is given. All measurements have been taken as a guide to prospective buyers only, and are not precise. Floor plans where included are not to scale and accuracy is not guaranteed. If you require clarification or further information on any points, please contact us, especially if you are travelling some distance to view. Fixtures and fittings other than those mentioned are to be agreed with the seller. We cannot also confirm at this stage of marketing the tenure of this house.

# Floor Plan

## Area Map



## Energy Efficiency Graph



These particulars, whilst believed to be accurate are set out as a general outline only for guidance and do not constitute any part of an offer or contract, purchaser should not rely on them as statements of representation of fact, but must satisfy themselves by inspection or otherwise as to their accuracy. No person in this firm's employment has the authority to make or give a representation or warranty in respect of the property.