



6 Ashdale, Houghton Le Spring, DH4 7SL

£325,000

Welcome to Ashdale, a charming residence nestled within an exclusive cul de sac setting in Mount Pleasant, Houghton Le Spring.

Positioned on a generous plot, this versatile home offers a delightful rear garden and captivating open views to the front. Upon entering, you are greeted by an inviting entrance hallway leading to the various living spaces. The ground floor features a cozy lounge, elegant dining room, and a captivating garden room that overlooks the lush rear garden. The heart of the home is the stylish breakfasting kitchen, complemented by a separate utility room for added convenience. Additionally, a flexible space on the ground floor could serve as a home office or a fourth bedroom.

Ascend the stairs to discover a spacious landing that opens into three double bedrooms. The master bedroom is a true retreat, complete with a walk-in wardrobe and a modern en suite bathroom. A well-appointed family bathroom/wc caters to the needs of the household. Outside, the property offers ample off-road parking with a large driveway and a garage, providing convenience for multiple vehicles.

This residence is offered for sale with no chain, presenting an excellent opportunity for a smooth transition.

KEY FEATURES

- 3/4 bedrooms including a ground floor home office or fourth bedroom
- Stylish breakfasting kitchen and separate utility room
- Captivating garden room overlooking the rear garden
- Master bedroom with walk-in wardrobe and modern en suite
- Elegant lounge, dining room, and ground floor wc
- Ample off-road parking with a large driveway and garage

ENTRANCE HALLWAY



LOUNGE

21'2" x 10'6" (6.47 x 3.22)



DINING ROOM

11'5" x 10'7" (3.50 x 3.25)



CONSERVATORY

12'8" x 15'3" (3.88 x 4.67)



KITCHEN

13'3" x 11'1" (4.04 x 3.40)



GROUND FLOOR WC



UTILITY ROOM

GROUND FLOOR HOME OFFICE / FOURTH BEDROOM

7'10" x 6'7" (2.41 x 2.01)

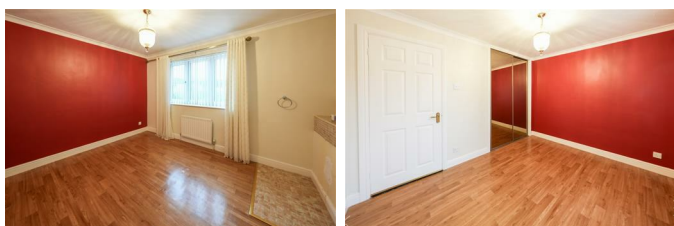


EN SUITE SHOWER ROOM/WC



BEDROOM TWO

9'9" x 10'10" (2.99 x 3.32)



FIRST FLOOR LANDING



BEDROOM THREE

11'1" x 8'2" (3.40 x 2.51)



BEDROOM ONE

14'11" x 9'7" (4.57 x 2.94)



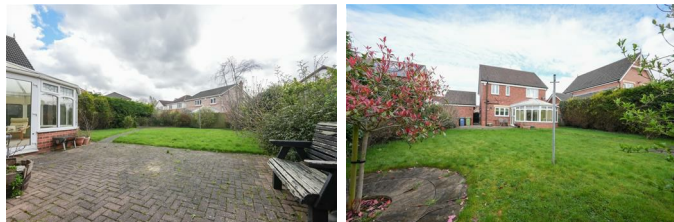
DRESSING AREA

8'9" x 4'2" (2.69 x 1.29)

BATHROOM/WC



REAR GARDEN



FRONT GARDEN AND DRIVE

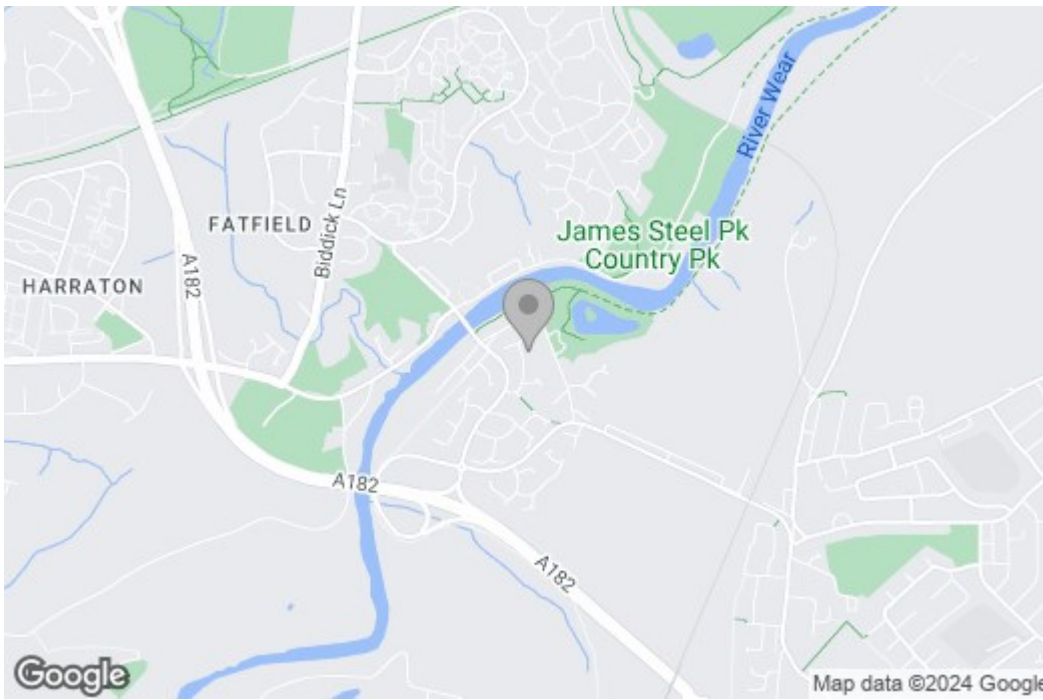


Property disclaimer

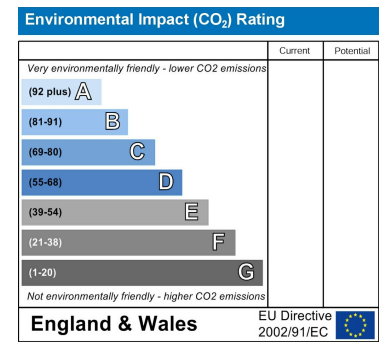
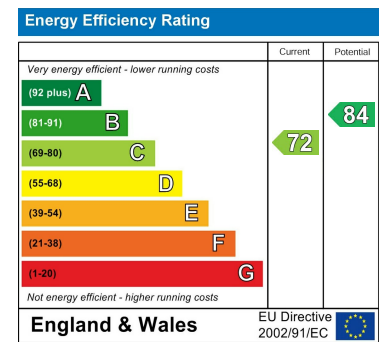
IMPORTANT NOTE TO PURCHASERS: We endeavour to make our sales particulars accurate and reliable, however, they do not constitute or form part of an offer or any contract and none is to be relied upon as statements of representation or fact. The services, systems and appliances listed in this specification have not been tested by us and no guarantee as to their operating ability or efficiency is given. All measurements have been taken as a guide to prospective buyers only, and are not precise. Floor plans where included are not to scale and accuracy is not guaranteed. If you require clarification or further information on any points, please contact us, especially if you are travelling some distance to view. Fixtures and fittings other than those mentioned are to be agreed with the seller. We cannot also confirm at this stage of marketing the tenure of this house.

Floor Plan

Area Map



Energy Efficiency Graph



These particulars, whilst believed to be accurate are set out as a general outline only for guidance and do not constitute any part of an offer or contract, purchaser should not rely on them as statements of representation of fact, but must satisfy themselves by inspection or otherwise as to their accuracy. No person in this firm's employment has the authority to make or give an representation or warranty in respect of the property.