



51 Palatine Place, Gateshead, NE11 9SR

£79,950

Top floor apartment situated in Palatine Place within this popular area, ideally located for local amenities and transport links. Accommodation: communal entrance with stairs and lift access, top floor apt hallway, open plan living room/dining kitchen with integrated oven, master bedroom offering great views, one further bedroom and bathroom. Communal gardens, allocated parking and visitors parking. Elec heating and double glazing. Viewings are essential to appreciate this lovely top floor apartment. LEASEHOLD TAX BAND A

COMMUNAL ENTRANCE

TOP FLOOR APARTMENT HALLWAY



LIVING ROOM/DINING KITCHEN

25'7" x 10'9" (7.82m x 3.29m)



LOUNGE AREA



KITCHEN AREA



MASTER BEDROOM

13'6" x 7'10" (4.12m x 2.39m)



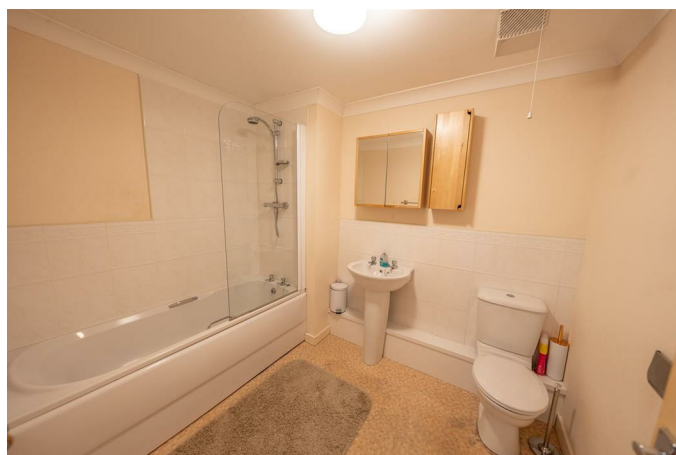
BEDROOM TWO

12'6" x 7'11" (3.83m x 2.43m)



BATHROOM

8'9" x 7'4" (2.68m x 2.26m)



EXTERNAL

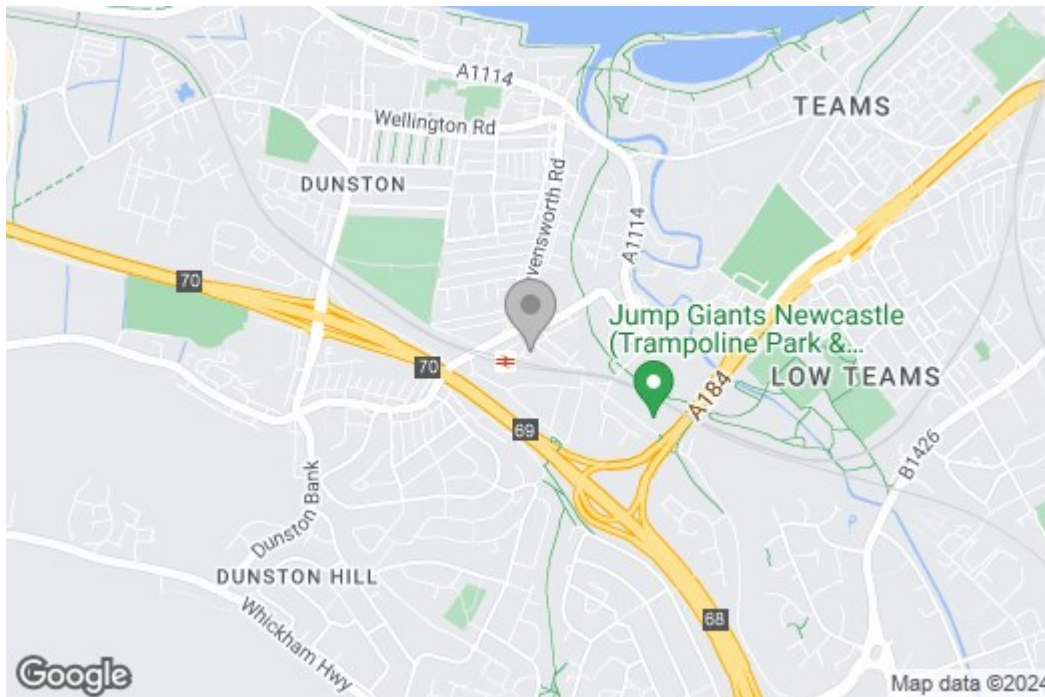
Property disclaimer

IMPORTANT NOTE TO PURCHASERS: We endeavour to make our sales particulars accurate and reliable, however, they do not constitute or form part of an offer or any contract and none is to be relied upon as

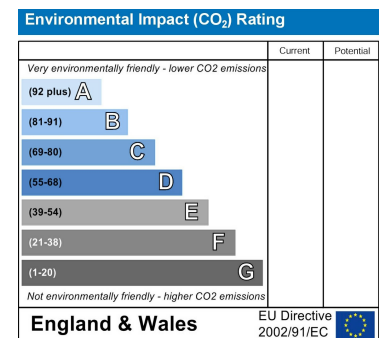
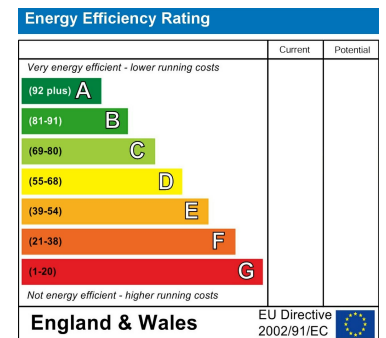
statements of representation or fact. The services, systems and appliances listed in this specification have not been tested by us and no guarantee as to their operating ability or efficiency is given. All measurements have been taken as a guide to prospective buyers only, and are not precise. Floor plans where included are not to scale and accuracy is not guaranteed. If you require clarification or further information on any points, please contact us, especially if you are travelling some distance to view. Fixtures and fittings other than those mentioned are to be agreed with the seller. We cannot also confirm at this stage of marketing the tenure of this house.

Floor Plan

Area Map



Energy Efficiency Graph



These particulars, whilst believed to be accurate are set out as a general outline only for guidance and do not constitute any part of an offer or contract, purchaser should not rely on them as statements of representation of fact, but must satisfy themselves by inspection or otherwise as to their accuracy. No person in this firm's employment has the authority to make or give an representation or warranty in respect of the property.