



20 Colesbourne Road

Bloxham

AN EXTENDED DETACHED FOUR BEDROOM FAMILY HOUSE IN AN ENVIABLE POSITION BACKING ONTO PLAYING/RECREATION GROUND WITH RURAL VIEWS BEYOND

Porch, hall, sitting room, family room/garden room/office, kitchen/dining room, utility room, cloakroom, main bedroom with ensuite shower room, three further bedrooms, family bathroom, gas ch via rads, double glazing, driveway for three cars, garage, gardens front and rear. Energy rating C.

GUIDE PRICE £500,000 FREEHOLD



Situation

BLOXHAM lies approximately 3 miles away from Banbury. It is a highly sought after and well served village with amenities including shops, a beauticians, a hairdressers, public houses, parish church, independent and comprehensive secondary schools, primary school, post office, bus service and doctor's surgery.

A floorplan has been prepared to show the dimensions and layout of the property as detailed below. Some of the main features are as follows:

- * A brick built detached house believed to date back to the late 1970's which occupies an enviable spot on the edge of the village backing onto a recreation area with rural views beyond.
- * An ideal family house with a ground floor extension creating spacious living accommodation.
- * South facing rear aspect.
- * Porch and hall with built-in cloaks cupboard.
- * Sitting room with large window to front and fitted wood burning stove.
- * Family room/garden room or office with sliding double glazed patio doors to the rear garden.
- * Kitchen/dining room with an outlook over the garden and fields beyond.
- * Utility room with door to side, plumbing for washing machine, space for further appliances and door to the cloakroom which is fitted with a white suite.
- * Main double bedroom with large window to front, wall to wall fitted wardrobes and door to the ensuite shower room which has a white suite comprising fully tiled shower cubicle, recessed wash hand basin, heated towel rail and extractor.
- * Three further bedrooms and family bathroom with a white suite comprising bath with shower over and fully tiled surround, wash hand basin, ceramic tiled floor, heated towel rail, window.
- * Separate WC with white suite and window.
- * Gas central heating via radiators and uPVC double glazing.
- * Lawned front garden with borders, driveway providing off road parking leading to the single garage.
- * Gated side access leads to a useful bin store area where there is a personal door to the garage and access to the rear garden which as mentioned above is south facing and includes a shaped patio, lawn and borders, shed and a gate opening to the recreation area.

Services

All mains services are connected including fibre broadband. EV charging point on front driveway. Solar panels which are owned on a feed in tariff. Installed capacity 2kw.

Local Authority

Cherwell District Council. Council tax band E.

Viewing

Strictly by prior arrangement with the Sole Agents Anker & Partners.

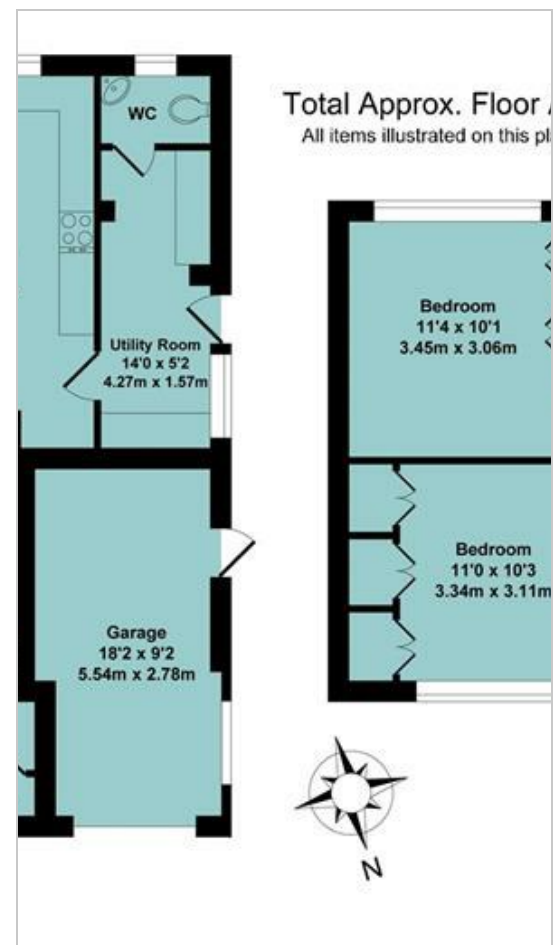
Energy rating: C

A copy of the full Energy Performance Certificate is available on request.

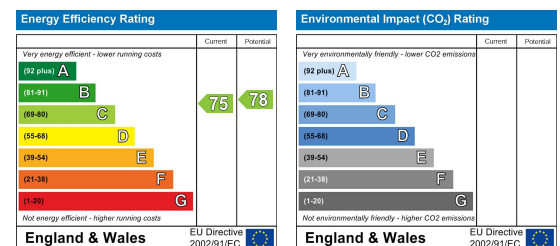
Area Map



Floor Plans



Energy Efficiency Graph



These particulars, whilst believed to be accurate are set out as a general outline only for guidance and do not constitute any part of an offer or contract. Intending purchasers should not rely on them as statements of representation of fact, but must satisfy themselves by inspection or otherwise as to their accuracy. No person in this firm's employment has the authority to make or give any representation or warranty in respect of the property.