



Gladiator Road
Upper Cambourne

Connells



This semi detached home boasts open plan kitchen/living/dining area to the ground floor, two bedrooms including a family bathroom. Outside hosts rear garden and driveway parking.

Entrance Hall

Door and window to front, storage cupboard for utility with plumbing for washing machine, Hive heating.

Cloakroom

Window to front, wash hand basin, WC, tiled splash back, extractor fan, lino flooring, fixed shelving, radiator.

Kitchen/Living/Dining Area

13' 6" Max x 21' 2" (4.11m Max x 6.45m)

Fitted kitchen with a range of wall and base units, complementary work surface, sink and drainer, double oven, four ring gas hob, integrated fridge/ freezer and dishwasher, under cupboard lighting. Windows to rear, french door to rear, Internet point, television point, radiator.

Landing

Radiator.



Bedroom One

13' 6" x 9' 11" (4.11m x 3.02m)

Window to rear, fitted wardrobe with walk in affect, fan light, television point, radiator.

Bedroom Two

8' 1" x 13' 6" Max (2.46m x 4.11m Max)

Two windows to front, fixed shelves, loft access with ladder, boarding and light, radiator.

Bathroom

Bath with shower over, wash hand basin, WC, extractor fan, chrome heated towel rail, smart lights motion sensor, fixed shelving.

Rear Garden

Fence enclosed, patio area, laid to lawn, path to shed, shed.

Parking

Driveway parking for two cars.

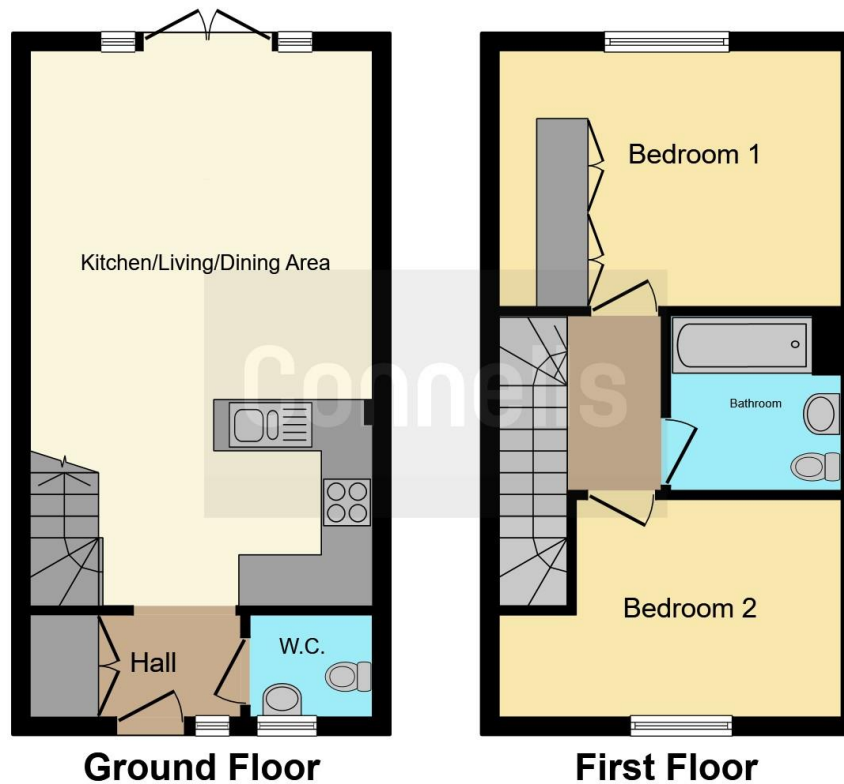
Agents Notes

Buyers should be made aware that limited information will be available with regards to Property Information Form enquiries.









This floor plan is for illustrative purposes only. It is not drawn to scale. Any measurements, floor areas (including any total floor area), openings and orientation are approximate. No details are guaranteed, they cannot be relied upon for any purpose and they do not form part of any agreement. No liability is taken for any error, omission or misstatement. A party must rely upon its own inspection(s). Powered by www.focalagent.com

To view this property please contact Connells on

T 01954 714900
E cambourne@connells.co.uk

Unit 2 Caxton House Broad Street Great Cambourne
 CAMBRIDGE CB23 6JN

EPC Rating: B

Tenure: Freehold

view this property online connells.co.uk/Property/CBN306298



1. MONEY LAUNDERING REGULATIONS Intending purchasers will be asked to produce identification documentation at a later stage and we would ask for your co-operation in order that there will be no delay in agreeing the sale. 2. These particulars do not constitute part or all of an offer or contract. 3. The measurements indicated are supplied for guidance only and as such must be considered incorrect. Potential buyers are advised to recheck measurements before committing to any expense. 4. We have not tested any apparatus, equipment, fixtures, fittings or services and it is in the buyers interest to check the working condition of any appliances.

Connells Residential is registered in England and Wales under company number 1489613, Registered Office is Cumbria House, 16-20 Hockliffe Street, Leighton Buzzard, Bedfordshire, LU7 1GN. VAT Registration Number is 500 2481 05.

See all our properties at www.connells.co.uk | www.rightmove.co.uk | www.zoopla.co.uk

Property Ref: CBN306298 - 0006