

# MILL MEADOWS

Viola  
HOMES

THE CREST | 3 bedroom semi-detached



## HOUSE STYLE FEATURES



Open plan kitchen and dining area



Integrated oven, hob and extractor



Separate lounge



Downstairs cloakroom



French doors to rear garden



Contemporary bathroom



Landscaped front garden



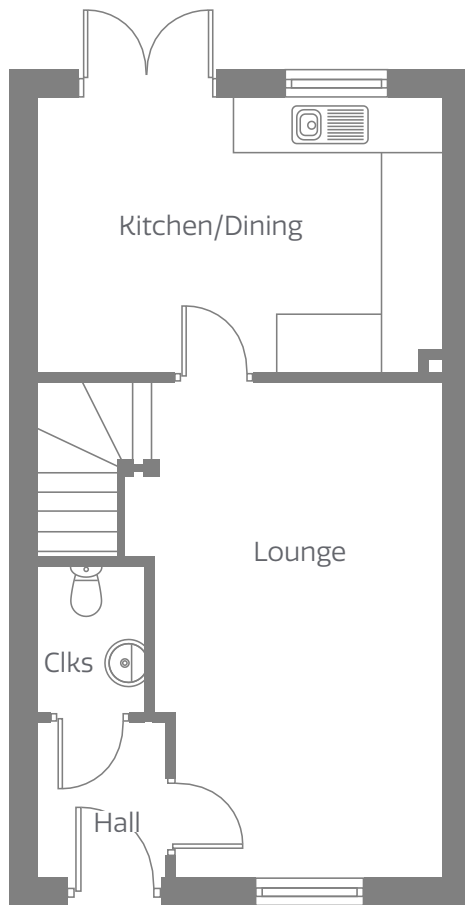
Two parking spaces



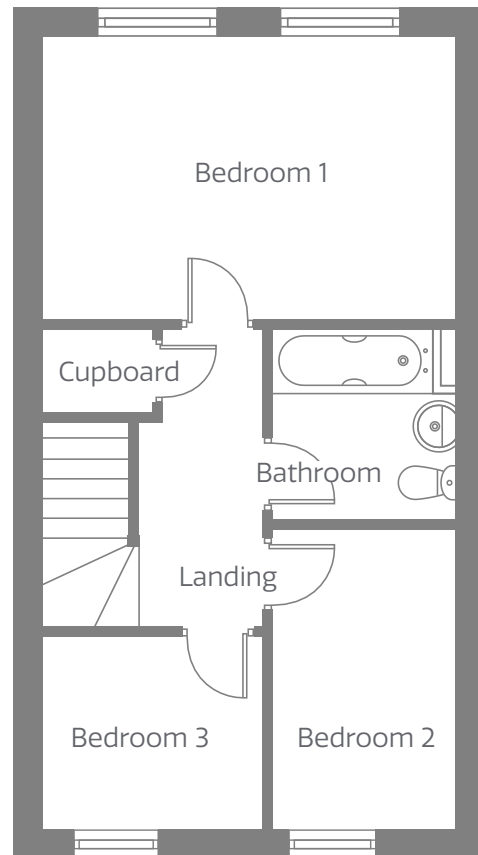
10 year NHBC warranty

# THE CREST

## Ground floor



## First floor



### Lounge

3.229m x 5.573m (10' 7" x 18' 3.5")

### Kitchen/Dining

4.530m x 3.125m (14' 10.5" x 10' 3")

### Hall

1.425m x 1.750m (4' 8" x 5' 9")

### Cloakroom

1.196m x 1.650m (3' 11" x 5' 5")

### Bedroom 1

4.530m x 3.170m (14' 10.5" x 10' 5")

### Bedroom 2

2.040m x 3.356m (6' 8.5" x 11' 0")

### Bedroom 3

2.385m x 2.146m (7' 10" x 7' 0.5")

### Bathroom

2.040m x 2.112m (6' 8.5" x 6' 11")

### Landing

1.304m x 3.322m (4' 3.5" x 10' 11")

### Cupboard

1.156m x 0.926m (3' 9.5" x 3' 0.5")

**CONSUMER  
CODE FOR  
HOME BUILDERS**

[www.consumercode.co.uk](http://www.consumercode.co.uk)

*Viola*  
HOMES

**APPROVED CODE  
TRADINGSTANDARDS.UK**

**For more  
information visit**

[violahomes.co.uk](http://violahomes.co.uk)

**T:** 0345 060 5555

**E:** [sales@violahomes.co.uk](mailto:sales@violahomes.co.uk)

Viola Homes is a trademark of Beyond Housing Limited (registered as a Community Benefit Society. Registration number 7814).

Please note floorplans and dimensions are taken from architectural drawings and are for guidance only. Dimensions stated are within a tolerance of plus or minus 50mm and these measurements should not be used for the purchase of carpets or furniture. Overall dimensions are usually stated and there may be projections into these. Computer generated images are not to scale. External finishes, landscaping and configuration is illustrative only and may vary from plot to plot. We operate a policy of continuous improvement and individual features such as kitchen and bathroom layouts, doors, windows, garages and elevation treatments may vary from time to time. To confirm specific details please ask our sales consultant. Consequently these particulars should be treated as general guidance only and do not constitute a contract, part of a contract or a warranty.