

£189,995

Mersey Road, Redcar, TS10



- Entrance Hallway
- Lounge
- Dining Room
- Sitting Room
- Kitchen
- Bathroom - Downstairs W.C.
- Four Bedrooms - Garage
- Front & Rear Garden - Driveway
- EPC Rated: C

We are pleased to bring to the market this generously sized four-bedroom semi-detached home, superbly positioned on the ever-popular Mersey Road in Redcar.

Ideally located within easy walking distance of well-regarded primary and secondary schools, convenience stores, takeaways, and excellent bus routes, the property offers a perfect blend of practicality and future potential.

Although some light cosmetic updating may be preferred, the home already benefits from a bright, modern kitchen, a spacious enclosed rear garden, and a substantial driveway. The ground floor provides three

versatile reception rooms—a Lounge, Dining Room, and a Sitting Room overlooking the garden, ideal as a playroom, home office, or additional family space.

Upstairs, four well-proportioned bedrooms are served by a family bathroom, with the added convenience of a downstairs W.C.

Externally, the large paved driveway offers ample parking for multiple vehicles, complemented by a garage providing further storage or potential utility space.

Accommodation comprises:

Entrance Hallway, Lounge, Dining Room, Sitting Room, Kitchen, Four Bedrooms, Bathroom, Downstairs W.C., Rear Garden, Front Garden, Driveway, Garage.

Why not take a tour by following the link: <https://view.ricoh360.com/dfa219d9-e83c-4f3f-87ca-4a4e41d9daf9>

EPC Rated: C

Council Tax: C

Tenure: Freehold

Mersey Road, Redcar, TS10

Entrance Hallway

9'0" x 17'0" (2.74m x 5.18m)

uPVC door and windows. Carpeted. uPVC Window. Radiator. Pendant light. Under stairs cupboard housing gas and electric meters.

Downstairs W.C.

uPVC window. Vinyl flooring. Spot light. Toilet.

Lounge

12'10" x 15'4" (3.91m x 4.67m)

uPVC bay window. Carpeted. 2x pendant lights. Gas fire with surround. Radiator. Wall cabinet. Tv aerial. Picture rail.

Sitting Room

11'3" x 22'2" (3.43m x 6.76m)

uPVC bay window. Carpeted. Radiator. 2x pendant lights.

Dining Room

9'0" x 8'8" (2.74m x 2.64m)

uPVC window. Carpeted. Radiator.

Kitchen

9'0" x 9'5" (2.74m x 2.87m)

uPVC door. uPVC window. Vinyl flooring. Strip light. Electric cooker. Gas hob. Plumbing for washing machine. Modern pale grey wall and base units. Wood effect laminate worktops. Stainless steel sink and mixer tap. Worcester boiler.

Stairs & Landing

Carpeted. uPVC window. Pendant light. Loft access - insulated. Storage cupboard.

Bathroom

6'2" x 6'2" (1.88m x 1.88m)

uPVC window. Vinyl flooring. White bath with shower over. White sink with mixer tap. White toilet.

Bedroom 1 (Front)

12'10" x 15'4" (3.91m x 4.67m)

uPVC bay window. Carpeted. Radiator. Pendant light. Wardrobes and cupboards.

Bedroom 2 (Rear)

11'3" x 12'9" (3.43m x 3.89m)

uPVC window. Carpeted. Radiator. Pendant light. Fitted wardrobes and drawers.

Bedroom 3 (Rear)

9'0" x 15'0" (2.74m x 4.57m)

uPVC window. Carpeted. Radiator. Spot light.

Bedroom 4 (Front)

7'5" x 9'6" (2.26m x 2.90m)

UPVC window. Carpeted. Pendant light. Radiator.

Front Garden

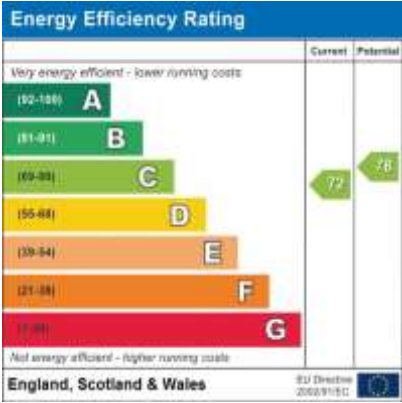
Mainly block paved with some trees and shrubs.

Large Rear Garden

Mainly laid to lawn with trees and shrubs. Access to rear garden through side gate.

Garage

Up and over door. Side access door. Window. Shelves and workbench.





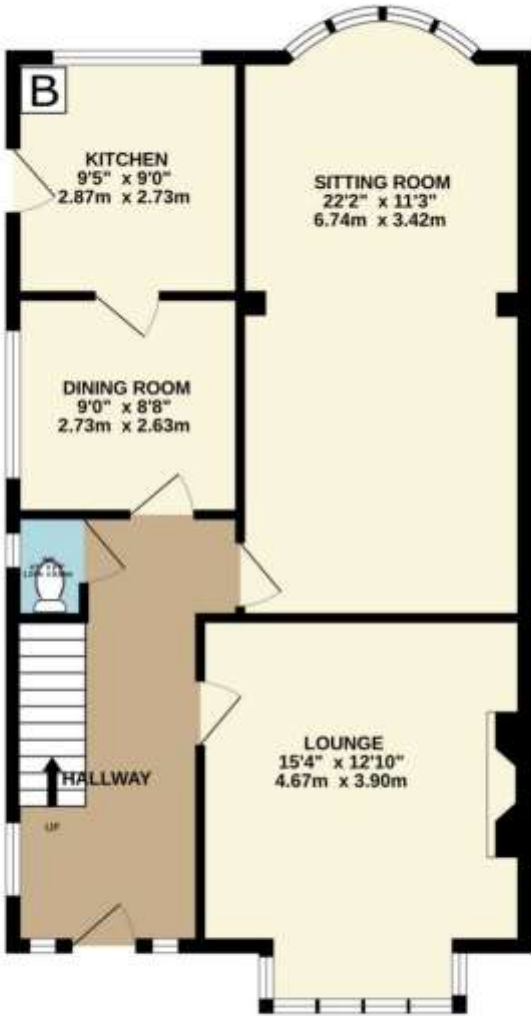








GROUND FLOOR



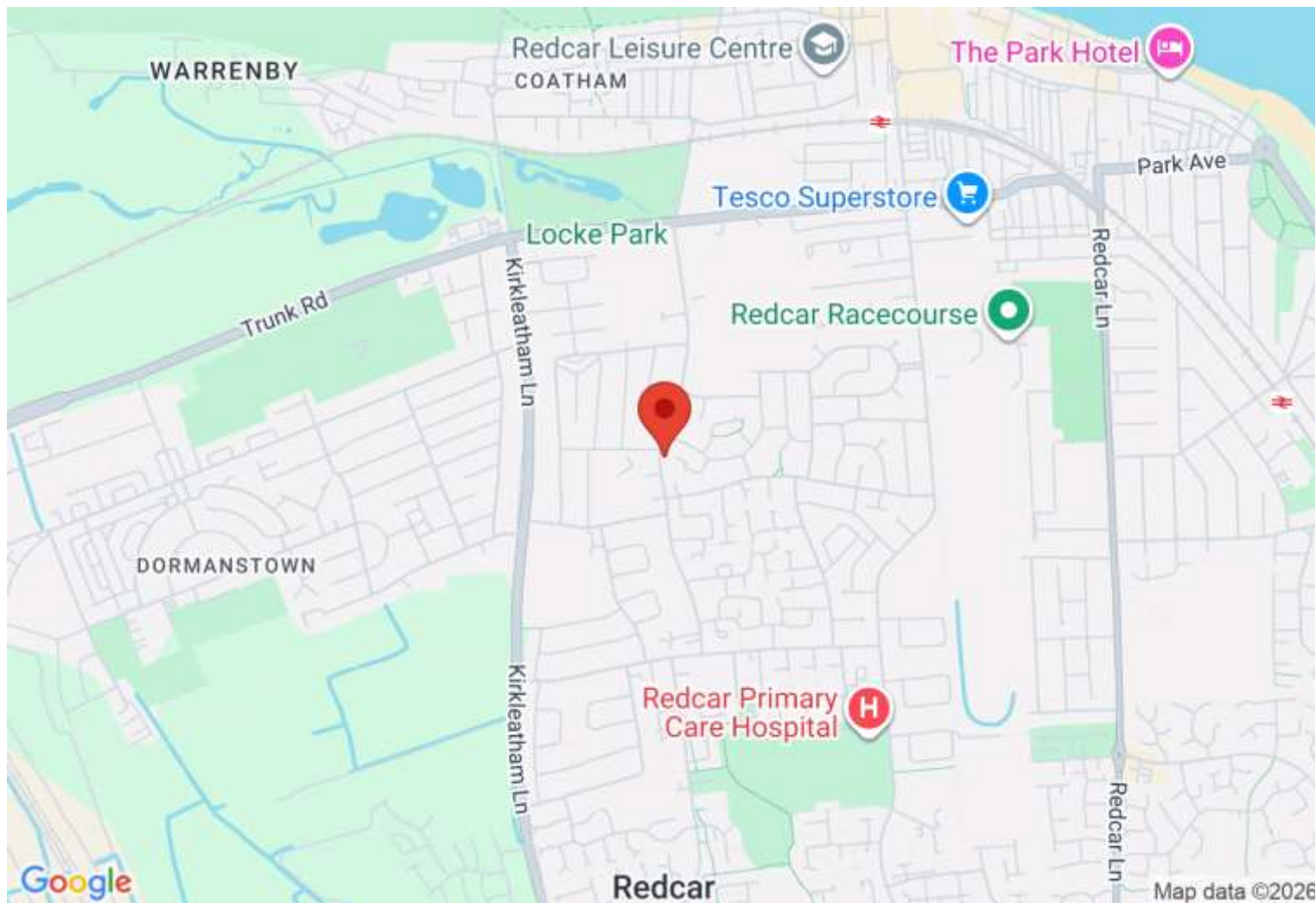
1ST FLOOR



Whilst every attempt has been made to ensure the accuracy of the floorplan contained here, measurements of doors, windows, rooms and any other items are approximate and no responsibility is taken for any errors, omissions or mis-statements. This plan is for illustrative purposes only and should be used as such by any prospective purchaser. The services, systems and appliances shown have not been tested and no guarantee as to their operability or efficiency can be given.
Made with Hozonix ©2025

Directions

Location



VIEWING BY APPOINTMENT WITH AGENTS REDCAR LETTINGS & SALES COMPANY LTD

Exchange Buildings, 17-19 Cleveland Street, Redcar, TS10 1AR T: 01642 483430 E: info@redcarletting.co.uk W: redcarlettingandsales.co.uk

General: While we endeavour to make our sales particulars fair, accurate and reliable, they are only a general guide to the property and, accordingly, if there is any point which is of particular importance to you, please contact the office and we will be pleased to check the position for you, especially if you are contemplating travelling some distance to view the property.

Measurements: These approximate room sizes are only intended as general guidance. You must verify the dimensions carefully before ordering carpets or any built-in furniture.

Services: Please note we have not tested the services or any of the equipment or appliances in this property, accordingly we strongly advise prospective buyers to commission their own survey or service reports before finalizing their offer to purchase.

THESE PARTICULARS ARE ISSUED IN GOOD FAITH BUT DO NOT CONSTITUTE REPRESENTATIONS OF FACT OR FORM PART OF ANY OFFER OR CONTRACT. THE MATTERS REFERRED TO IN THESE PARTICULARS SHOULD BE INDEPENDENTLY VERIFIED BY PROSPECTIVE BUYERS OR TENANTS. NEITHER REDCAR LETTINGS & SALES COMPANY LTD NOR ANY OF ITS EMPLOYEES OR AGENTS HAS ANY AUTHORITY TO MAKE OR GIVE ANY REPRESENTATION OR WARRANTY WHATEVER IN RELATION TO THIS PROPERTY.

YOUR HOME IS AT RISK IF YOU DO NOT KEEP UP REPAYMENTS ON A MORTGAGE OR OTHER LOAN SECURED ON IT.

Written quotations available on request. All loans secured on property. Life assurance is usually required.