

£65,000

Butterworth House, Master Road, Thornaby, TS17



- Two Bedrooms
- Double Glazed
- Gas Central Heating
- Lounge/Diner
- En-Suite
- Second Floor Flat
- Kitchen
- Resident Parking
- Bathroom – EPC: B

We are delighted to welcome to the market this two bedroom second floor apartment situated at Butterworth House, Thornaby.

This property is available to Investors looking to expand their portfolio and has the benefit of a tenant in situ.

Gas safety and electrical safety certifications are currently up to date and available upon request.

Key Information:

Tenanted @ £595PCM AST from 2nd August 2024

Tenure: Leasehold - 150 Years from January 2007

Annual Ground Rent - £100 Per Annum

Service Charge - £1014.97 Per Annum

EPC Rated: B

Council Tax: B

Briefly the accommodation comprises;

Lobby, Hallway, Two Bedrooms, En-Suite, Bathroom, Kitchen, Lounge/Diner, Allocated Resident Parking, Gas Central Heating, Double Glazed.

Viewings are strictly VIA the Agent.

Virtual Tour: <https://view.ricoh360.com/37f60395-a51d-4613-b847-9b6e34ea3e16>

Butterworth House, Master Road, Thornaby, TS17

Entrance Hallway

Carpeted. Smoke detector. Intercom system. Heating controls. Storage cupboard housing boiler and distribution board.

Kitchen

10'0" x 6'7" (3.05m x 2.01m)
Vinyl flooring. Beech effect base and wall mounted units. Marble effect worktop. Zanussi electric oven and gas hob. Extractor fan. Whirlpool fridge. Hoover washing machine.

Lounge

16'9" x 10'7" (5.11m x 3.23m)
Carpeted. Bay window. Two radiators. TV and phone socket. Blinds. Pendant light.

Bedroom 1

11'2" x 10'2" (3.40m x 3.10m)
Carpeted. Radiator. Blinds. Pendant light.

Bedroom 2

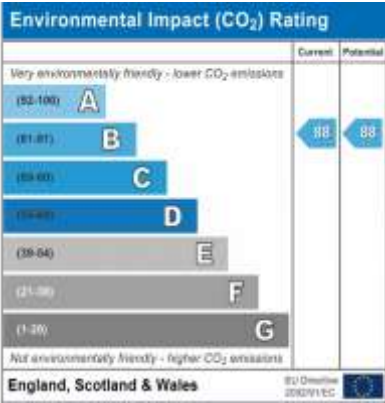
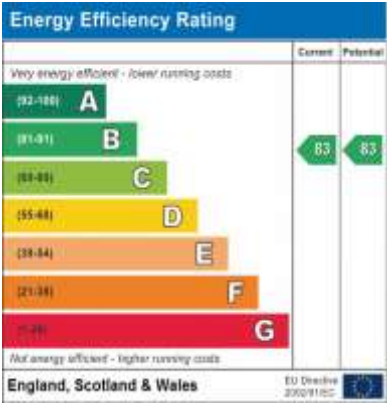
10'2" x 7'1" (3.10m x 2.16m)
Carpeted. Radiator. Blinds. Pendant light.

Bathroom

6'6" x 6'5" (1.98m x 1.96m)
Vinyl flooring. Radiator. Partially tiled. Mirror. Toilet. Sink. Bath.

En-suite

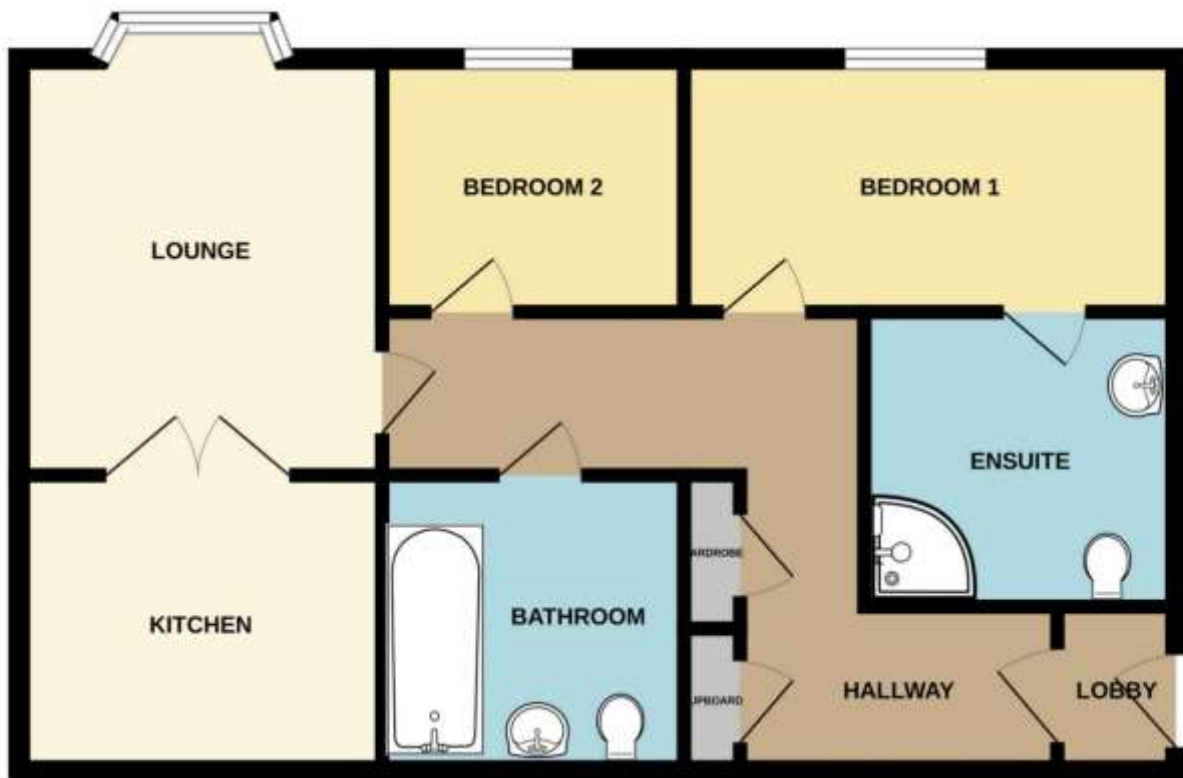
5'11" x 5'10" (1.80m x 1.78m)
Vinyl flooring. Shower cubicle. Toilet. Sink. Mirror. Radiator.







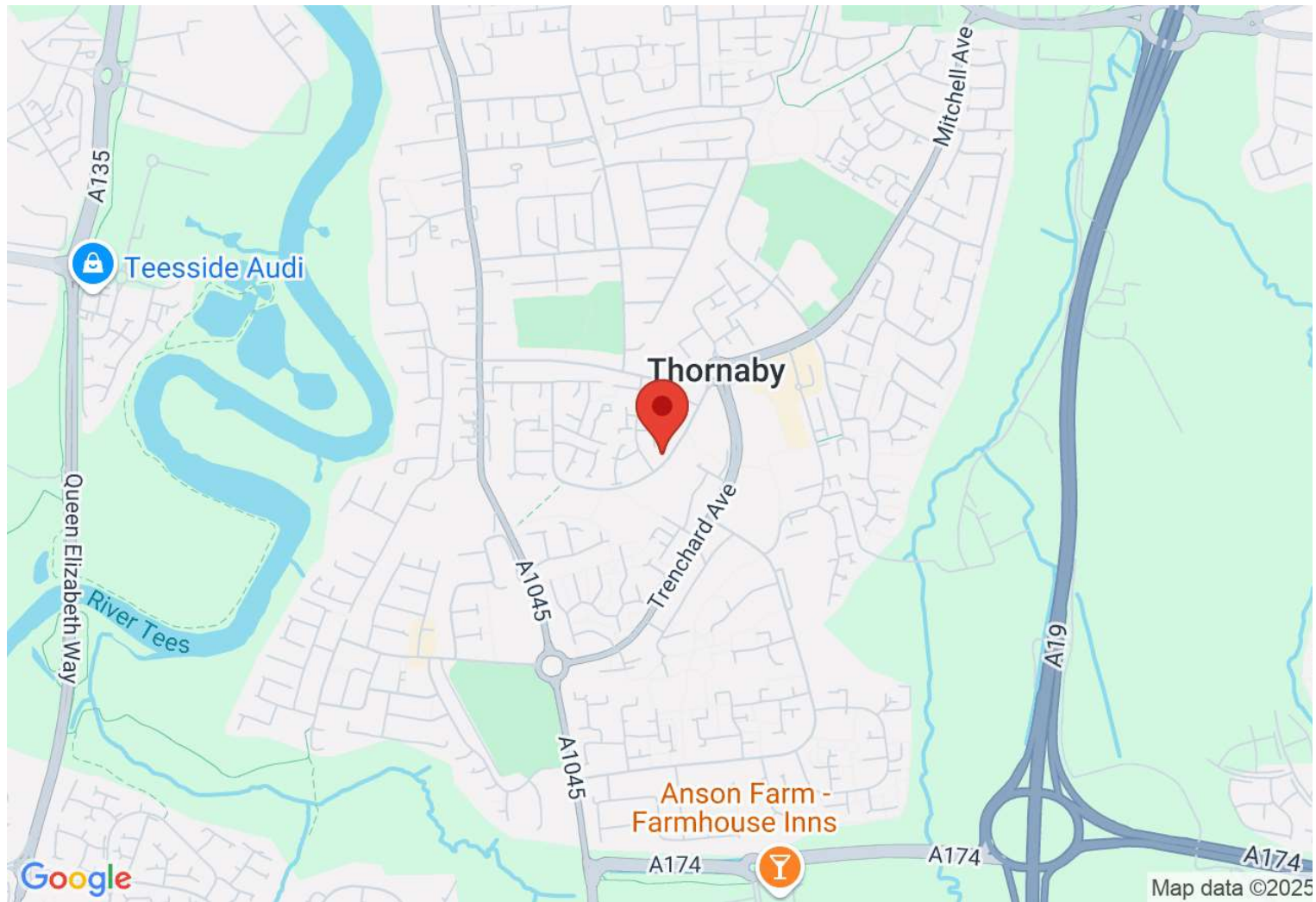
GROUND FLOOR



Whilst every attempt has been made to ensure the accuracy of the floorplan contained here, measurements of doors, windows, rooms and any other items are approximate and no responsibility is taken for any error, omission or mis-statement. This plan is for illustrative purposes only and should be used as such by any prospective purchaser. The services, systems and appliances shown have not been tested and no guarantee as to their operability or efficiency can be given.
Made with Metropix ©2025

Directions

Location



VIEWING BY APPOINTMENT WITH AGENTS REDCAR LETTINGS & SALES COMPANY LTD

Exchange Buildings, 17-19 Cleveland Street, Redcar, TS10 1AR T: 01642 483430 E: info@redcarletting.co.uk W: redcarlettingandsales.co.uk

General: While we endeavour to make our sales particulars fair, accurate and reliable, they are only a general guide to the property and, accordingly, if there is any point which is of particular importance to you, please contact the office and we will be pleased to check the position for you, especially if you are contemplating travelling some distance to view the property.

Measurements: These approximate room sizes are only intended as general guidance. You must verify the dimensions carefully before ordering carpets or any built-in furniture.

Services: Please note we have not tested the services or any of the equipment or appliances in this property, accordingly we strongly advise prospective buyers to commission their own survey or service reports before finalizing their offer to purchase.

THESE PARTICULARS ARE ISSUED IN GOOD FAITH BUT DO NOT CONSTITUTE REPRESENTATIONS OF FACT OR FORM PART OF ANY OFFER OR CONTRACT. THE MATTERS REFERRED TO IN THESE PARTICULARS SHOULD BE INDEPENDENTLY VERIFIED BY PROSPECTIVE BUYERS OR TENANTS. NEITHER REDCAR LETTINGS & SALES COMPANY LTD NOR ANY OF ITS EMPLOYEES OR AGENTS HAS ANY AUTHORITY TO MAKE OR GIVE ANY REPRESENTATION OR WARRANTY WHATEVER IN RELATION TO THIS PROPERTY.

YOUR HOME IS AT RISK IF YOU DO NOT KEEP UP REPAYMENTS ON A MORTGAGE OR OTHER LOAN SECURED ON IT.

Written quotations available on request. All loans secured on property. Life assurance is usually required.