

MATTHEW JAMES

Residential Sales • Lettings • Management



St. Marys Flats Doric Way, Euston, NW1 1LB

Asking Price £325,000

Matthew James offer for sale a first floor one bedroom flat with lift access requiring updating. Located centrally and close to London Euston and St Pancras International Stations, whilst to the west and within walking distance are the wide open green spaces of Regents Park, Camden Town with its famous bustling market is a short walk north and well located for access to both Central and the West End of London with it's array of attractions. Available for sale chain free. New 250 Year Lease. Mixed Tenure Block.

First Floor

Hallway



Bedroom



Living Room



Bathroom/W.C.



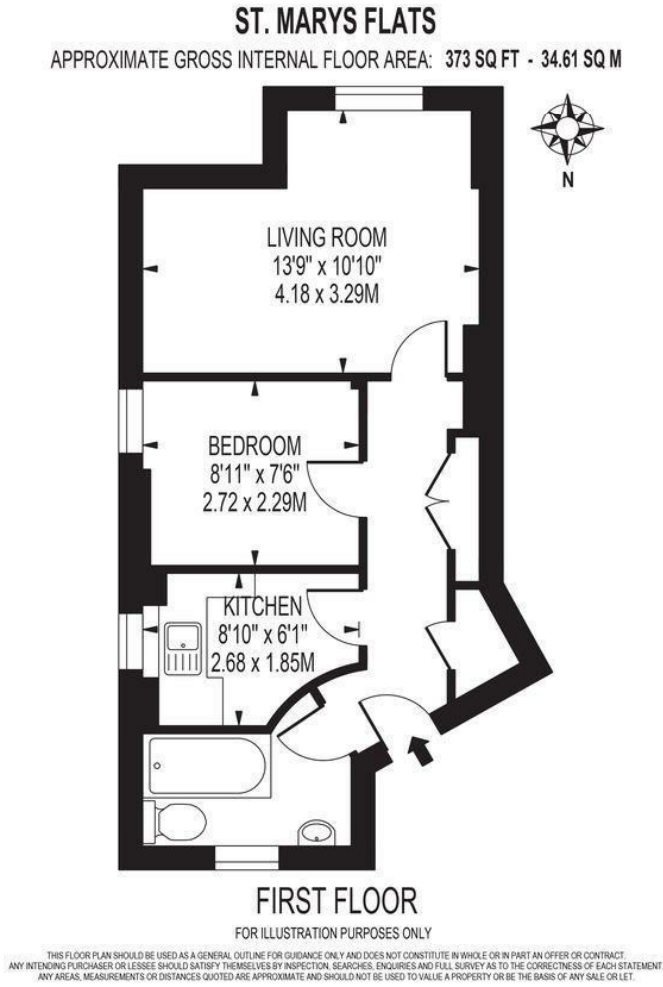
Kitchen



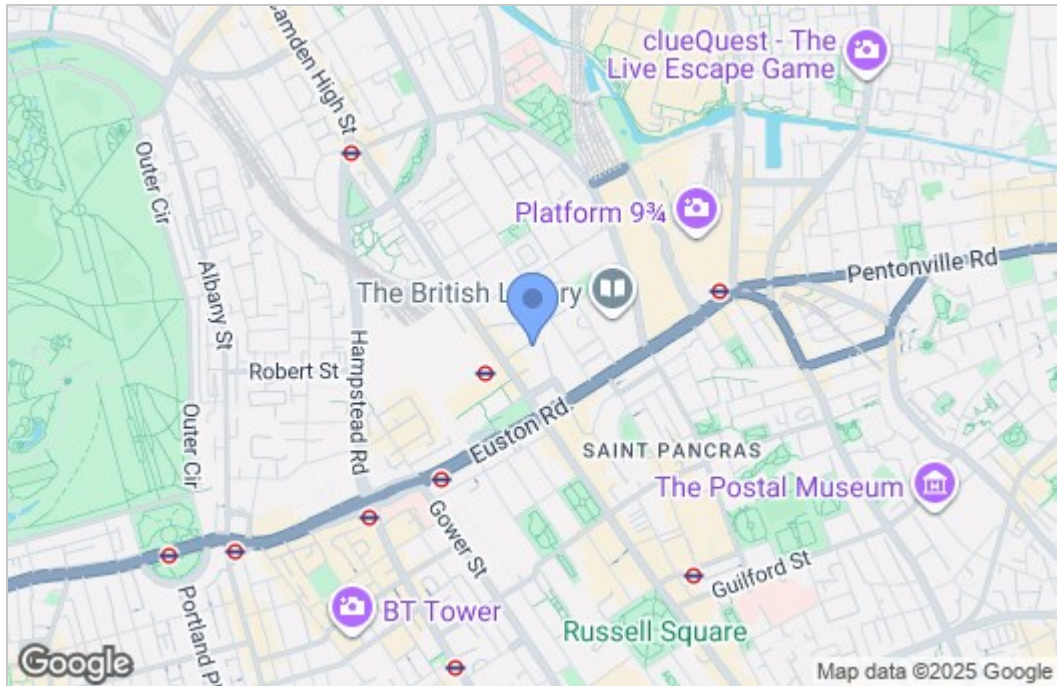
Additional Information

New 250 Year Lease
Service Charges £1014 per annum
Ground Rent - Zero
Mixed Tenure Housing
Camden Council Tax Band C

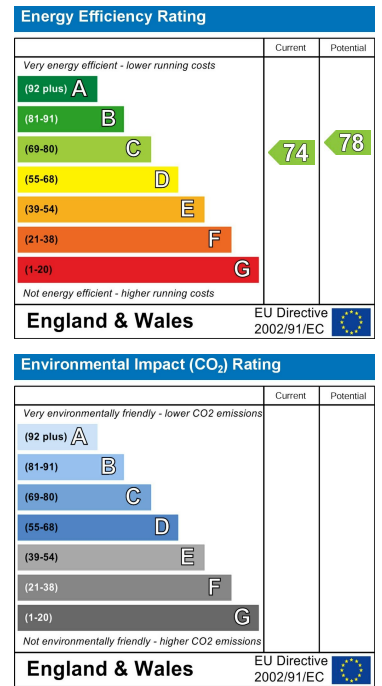
Floor Plan



Area Map



Energy Efficiency Graph



These particulars, whilst believed to be accurate are set out as a general outline only for guidance and do not constitute any part of an offer or contract. Intending purchasers should not rely on them as statements of representation of fact, but must satisfy themselves by inspection or otherwise as to their accuracy. No person in this firm's employment has the authority to make or give any representation or warranty in respect of the property.