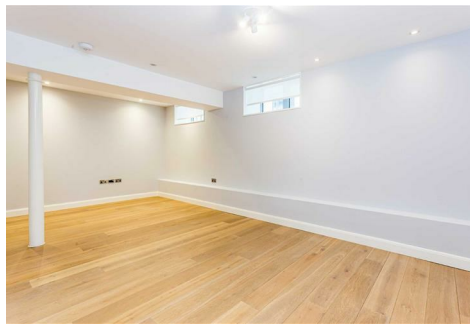


# MATTHEW JAMES

Residential Sales • Lettings • Management



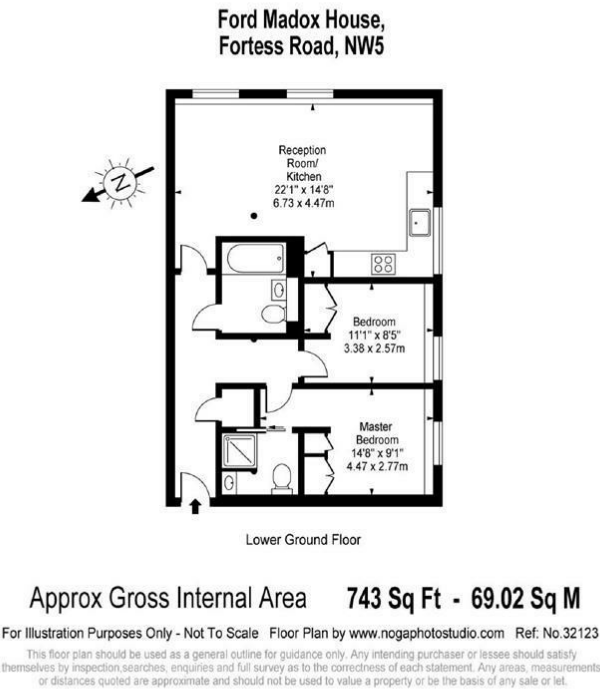
Bellina Mews, Kentish Town, NW5 1BG

**£2,400 Per Calendar Month**

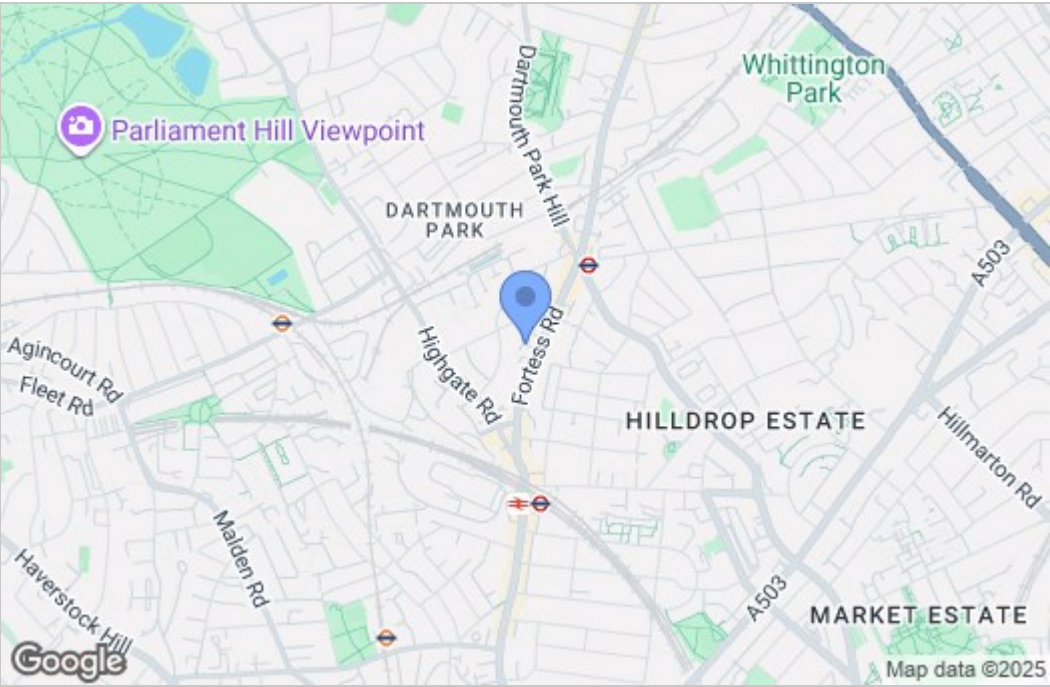
An elegant two bedroom apartment with large open plan living room to kitchen, two bathrooms (one en-suite) with a high specification throughout located in a quiet mews turning and within a short walk of the independent shops, cafes and restaurants along the high street with Tufnell Park and Kentish Town tube close-by. A ten minute walk west of Tufnell Park takes you to Parliament Hill Fields with its excellent range of amenities including tennis courts, a running track, lido, cafe and Sunday market all of which lead onto the wide open spaces of Hampstead Heath. Offered Unfurnished. Available Now.



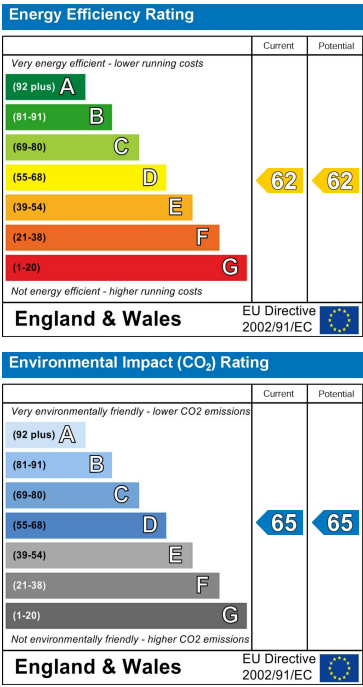
Floor Plan



Area Map



Energy Efficiency Graph



These particulars, whilst believed to be accurate are set out as a general outline only for guidance and do not constitute any part of an offer or contract. Intending purchasers should not rely on them as statements of representation of fact, but must satisfy themselves by inspection or otherwise as to their accuracy. No person in this firm's employment has the authority to make or give any representation or warranty in respect of the property.