

# MATTHEW JAMES

Residential Sales • Lettings • Management



Tiverton Mansions Gray's Inn Road, Holborn, WC1X 8AZ

**Asking Price £375,000**

A one double bedroom third floor mansion flat offering 411 Sq.Ft (38 Sq.M.) of internal floor space requiring full refurbishment. The property offers classic mansion flat features with high ceilings and sash windows (double glazed). The property is located on Grays Inn Road and is a short walk away from Chancery Lane tube station and the green open spaces of Coram's Fields and the shops and eateries within the Brunswick Centre. Offered Chain Free. Mixed Tenure Block. New 250 Year Lease.



Third Floor Entrance  
Stair access.

Living Room



Kitchenette



Bedroom



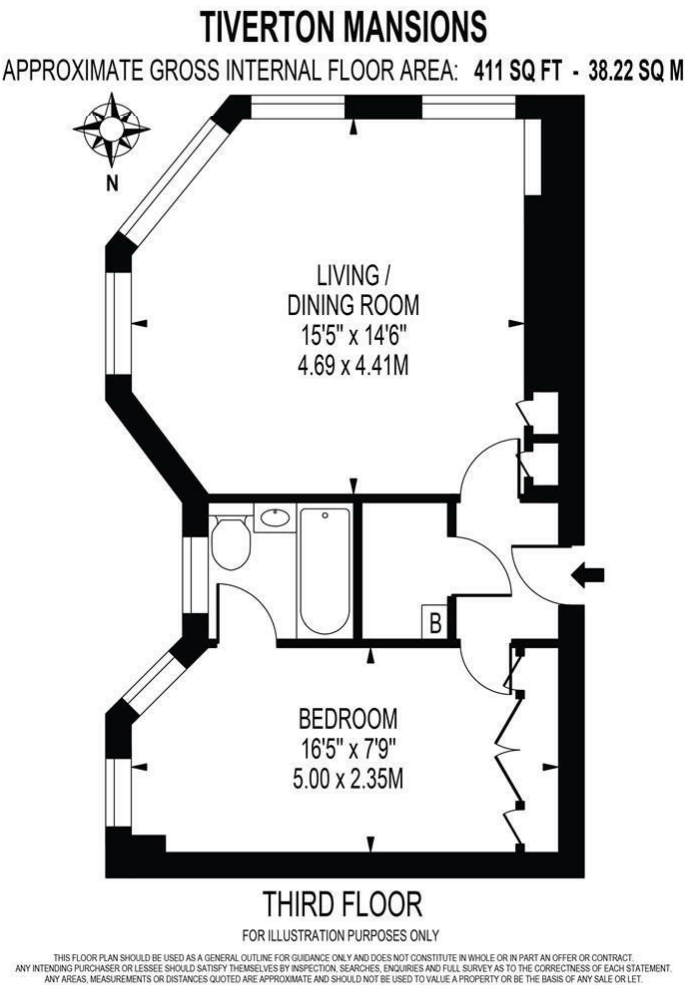
Bathroom



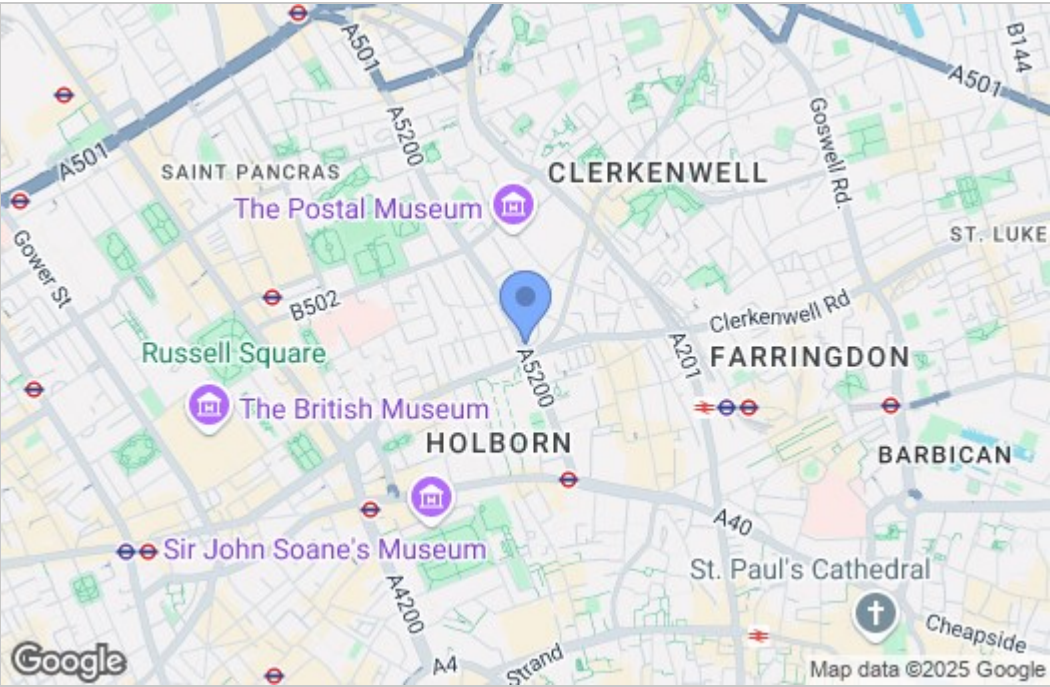
Additional Information

New 250 Year Lease  
Service Charges T.B.C.  
Ground Rent - Zero  
Camden Council Tax Band C

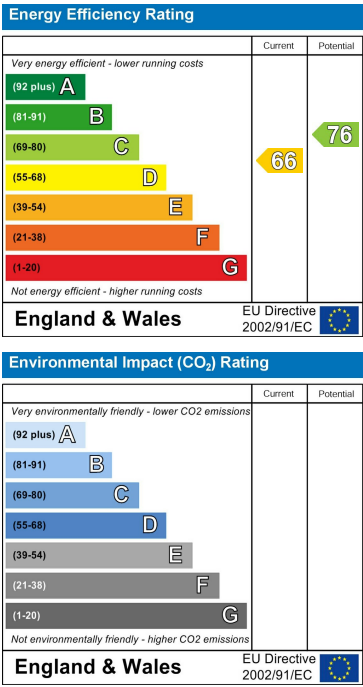
Floor Plan



Area Map



Energy Efficiency Graph



These particulars, whilst believed to be accurate are set out as a general outline only for guidance and do not constitute any part of an offer or contract. Intending purchasers should not rely on them as statements of representation of fact, but must satisfy themselves by inspection or otherwise as to their accuracy. No person in this firm's employment has the authority to make or give any representation or warranty in respect of the property.