

# MATTHEW JAMES

Residential Sales • Lettings • Management

Churchway, London, NW1 2AW

Asking Price £725,000







# Churchway

London, NW1 2AW

- Superb First Floor Apartment
- Bright Lounge
- Bathroom
- Chain Free
- Two Double Bedrooms
- Modern Well Fitted Kitchen
- Enormous Private Roof Terrace
- First Class Location

Well positioned just moments from Euston Station and the wonderful cafes and eateries of the area, and securely placed behind a large entrance gate leading to a central courtyard. We are delighted to offer for sale this very stylish 2 double bedroom first floor apartment with it's own private entrance and quite magnificent private roof terrace. This light and spacious property is well planned and offered for sale chain free. We highly recommend viewing.



[Entrance Courtyard](#)

[Ground Floor](#)

[Entrance](#)

[First Floor](#)

[Entrance Hall](#)

[Lounge](#)

[Kitchen](#)

[Master Bedroom](#)

[Bedroom Two](#)

[Bathroom](#)

[Terrace](#)

[Additional Information](#)





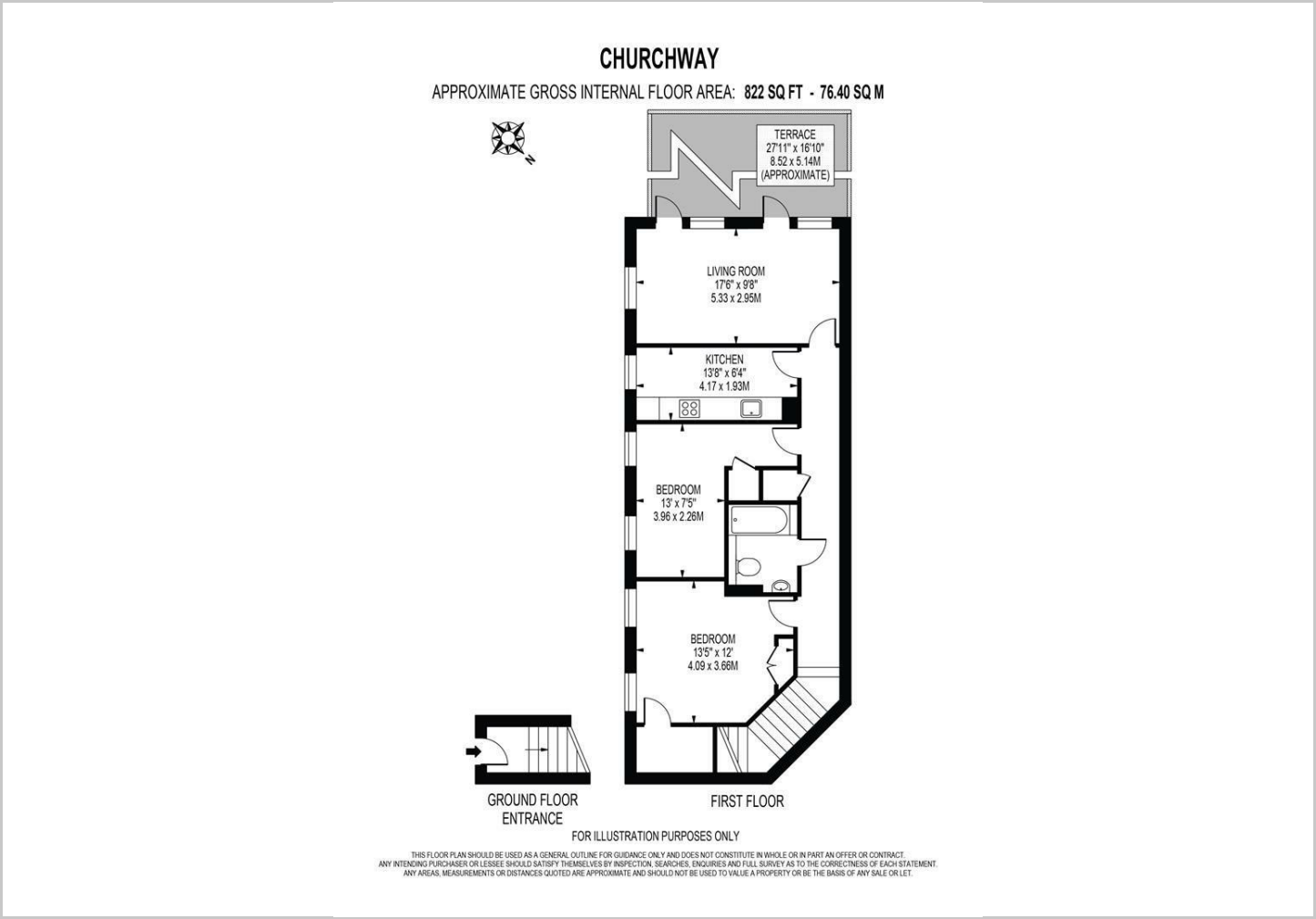
[Directions](#)







Floor Plans

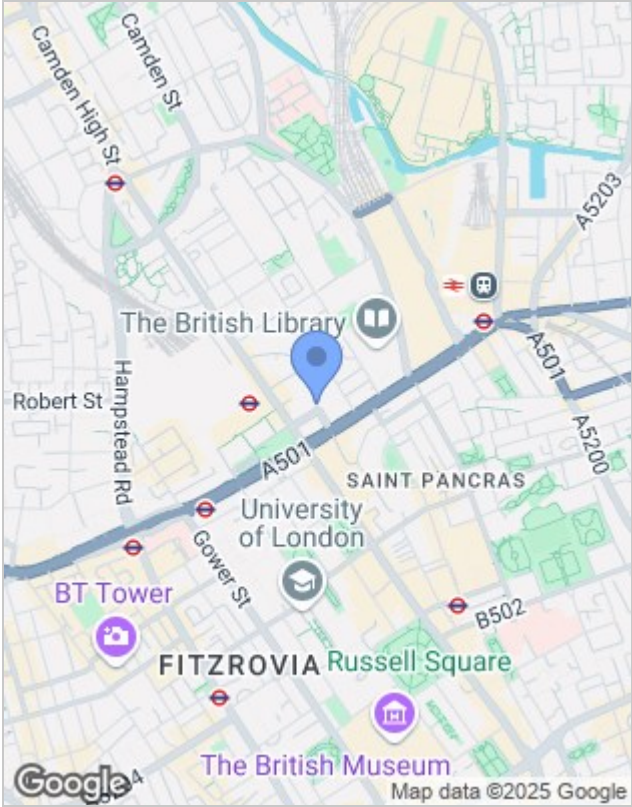


Viewing

Please contact our Kentish Town Office on 020 7284 4343 if you wish to arrange a viewing appointment for this property or require further information.

The particulars are set out as a general outline only for the guidance of intended purchasers or lessees, and do not constitute, any part of a contract. Nothing in these particulars shall be deemed to be a statement that the property is in good structural condition or otherwise nor that any of the services, appliances, equipment or facilities are in good working order. Purchasers should satisfy themselves of this prior to purchasing.

Location Map



Energy Performance Graph

