

MATTHEW JAMES

Residential Sales • Lettings • Management



Mercers Road, Tufnell Park, N19 4PJ

Asking Price £2,700,000





Mercers Road

Tufnell Park, N19 4PJ

On the market for the first time in 33 years is this magnificent semi detached period five bedroom family home with study arranged over four floors with various split/mezzanine levels set within a wide plot with 3219 Sq/Ft (299 Sq/M) of internal floor space. Boasting a wealth of original features this impressive house has a wide entrance hall leading to a superb 35' through lounge, a large kitchen dining room with Aga range opening into a beautiful morning room, two bathrooms, a shower room, guest cloakroom, a dressing room (currently a kitchen), flexible lower ground floor accommodation (au pair accommodation or play rooms), utility room, a beautiful 100ft south west facing rear garden with garden room and off street parking for two vehicles to the front. Viewings Strictly By Appointment.



Asking Price £2,700,000



Ground Floor

Entrance Hallway

Front Reception

Rear Reception

Kitchen Dining Room

Morning Room

Guest Cloakroom

Mezzanine Floor

Landing

Guest Bedroom

Bathroom / W.C.

Study

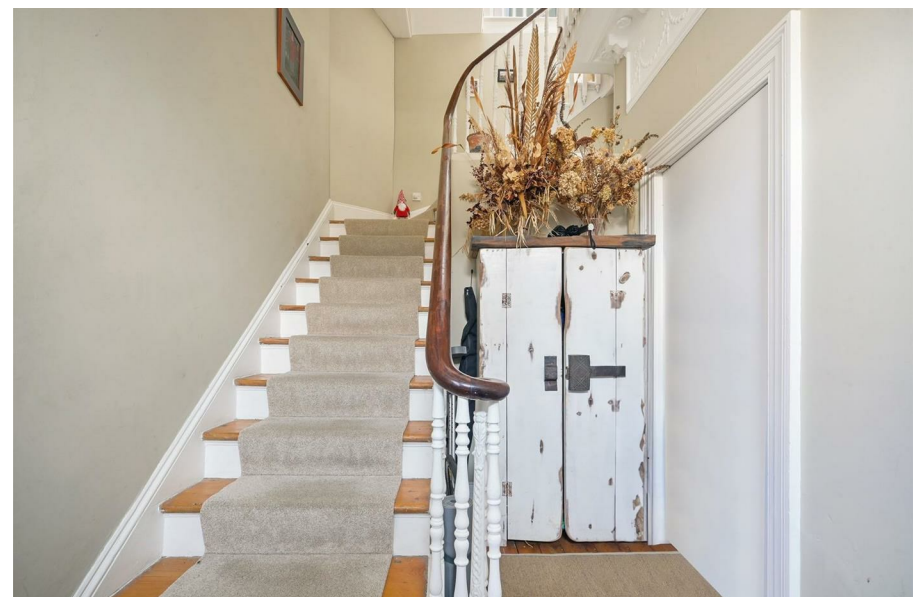
W.C.

First Floor



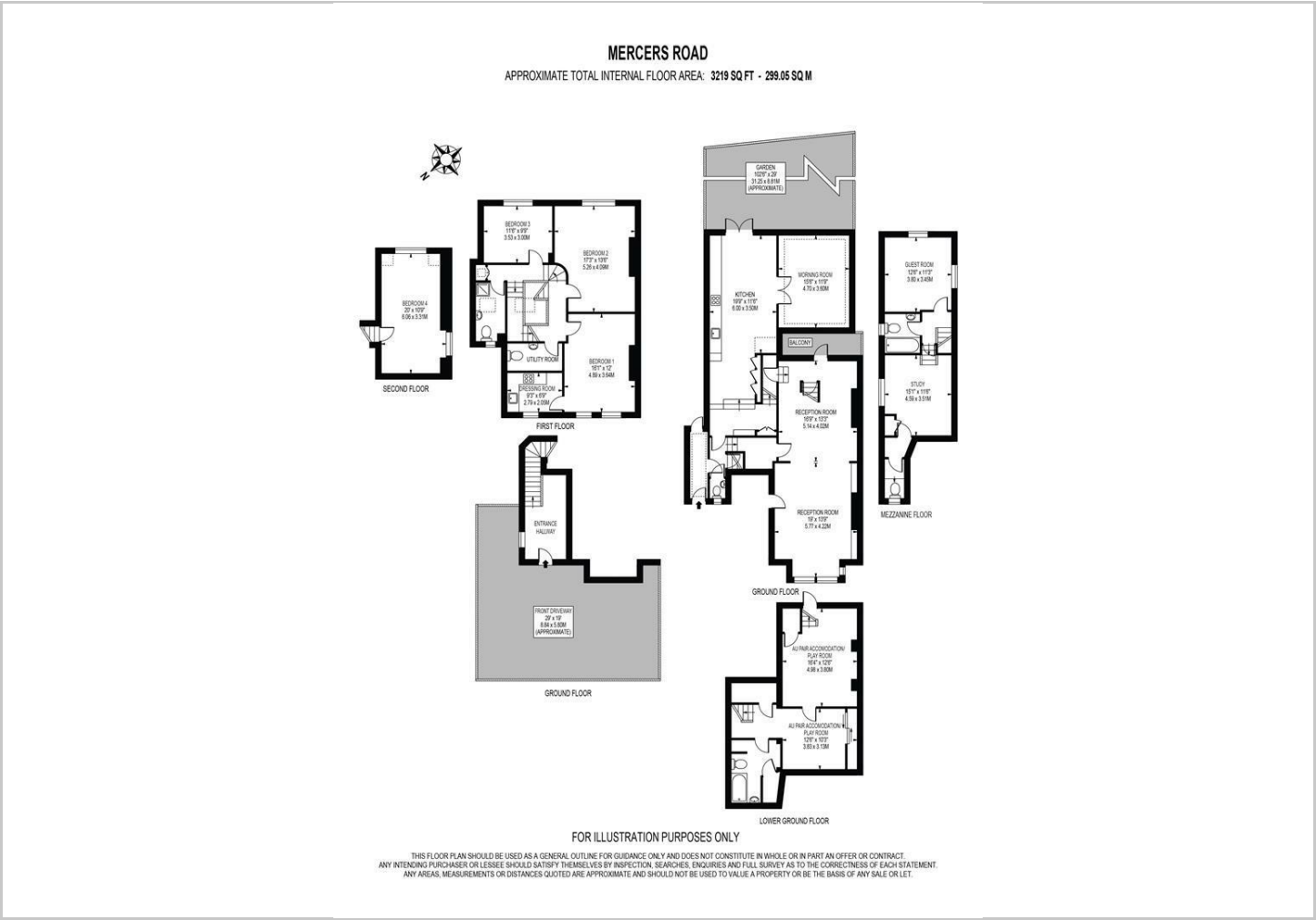
Landing
Bedroom One
Dressing Room (currently a kitchen)
Bedroom Two
Bedroom Three
Shower Room / W.C.
Utility Room / W.C.
Top Floor
Bedroom Four
Lower Ground Floor
Au Pair Accommodation / Play Room
Au Pair Accommodation / Play Room
Bathroom / W.C.
Rear Garden

Directions





Floor Plans

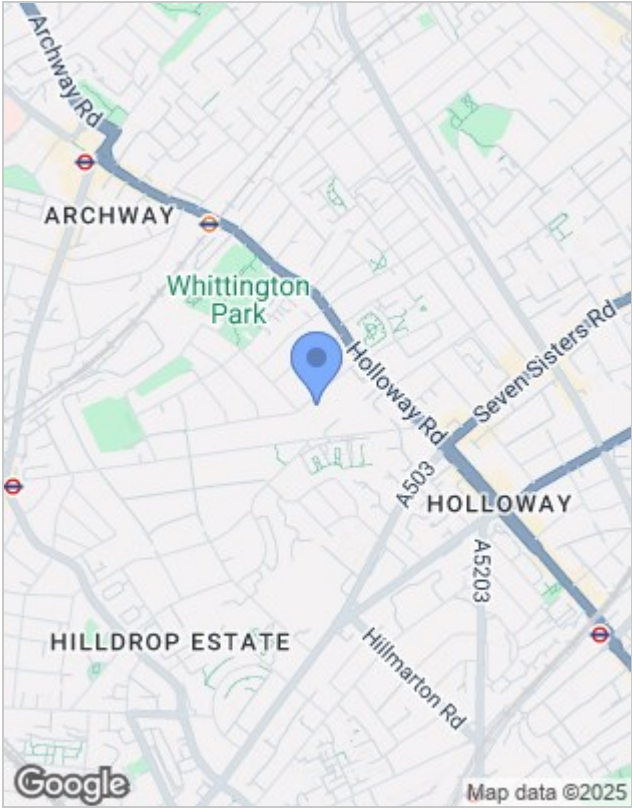


Viewing

Please contact our Kentish Town Office on 020 7284 4343 if you wish to arrange a viewing appointment for this property or require further information.

The particulars are set out as a general outline only for the guidance of intended purchasers or lessees, and do not constitute, any part of a contract. Nothing in these particulars shall be deemed to be a statement that the property is in good structural condition or otherwise nor that any of the services, appliances, equipment or facilities are in good working order. Purchasers should satisfy themselves of this prior to purchasing.

Location Map



Energy Performance Graph

