

MATTHEW JAMES

Residential Sales • Lettings • Management



Lawford Road, Kentish Town, NW5 2LN

£2,000 Per Month

A spacious, bright, one double bedroom flat on the raised ground floor of an imposing Victorian house located on a sought after quiet tree lined road. The property offers high ceilings throughout and two large sash windows to front and rear elevations. Situated in close proximity to Kentish Town High Road and within a short walk of Camden Town and the numerous cafes, restaurants, hostelrys, local amenities and transport links they offer, including Kentish Town Underground Station (northern line) and Thameslink Overground service and a host of bus routes. Unfurnished. Available from 06th July 2024.

Raised Ground Floor Entrance
Elevated position to ground level.

Hallway
Features whitewashed wooden flooring and a large under stairs storage space.

Living Room



A great space featuring a high ceiling and impressive tall sash window overlooking the rear of the property, whitewashed wooden flooring, low level storage cupboard and radiator. Open to....

Open Plan Kitchen



A range of white base units with stainless steel fittings with a dark granite effect work surface across one wall, featuring a stainless steel sink/drainage unit with swan neck mixer tap, electric oven and grill with four rings and extractor fan above, freestanding fridge/freezer, shelving and white high gloss tiled splash-backs.

Double Bedroom



A spacious double bedroom with a high ceiling and a wide, tall, sash window with original shutters, carpeted and radiator.

Bathroom



A white suite with chrome fittings comprising of a panel enclosed bath with wall mounted shower attachment and glass shower screen, pedestal wash hand basin, low flush W.C, heated towel rail, frosted sash window overlooking the rear of the property and a large airing cupboard housing the properties washing machine and boiler.

Exterior



Additional Information

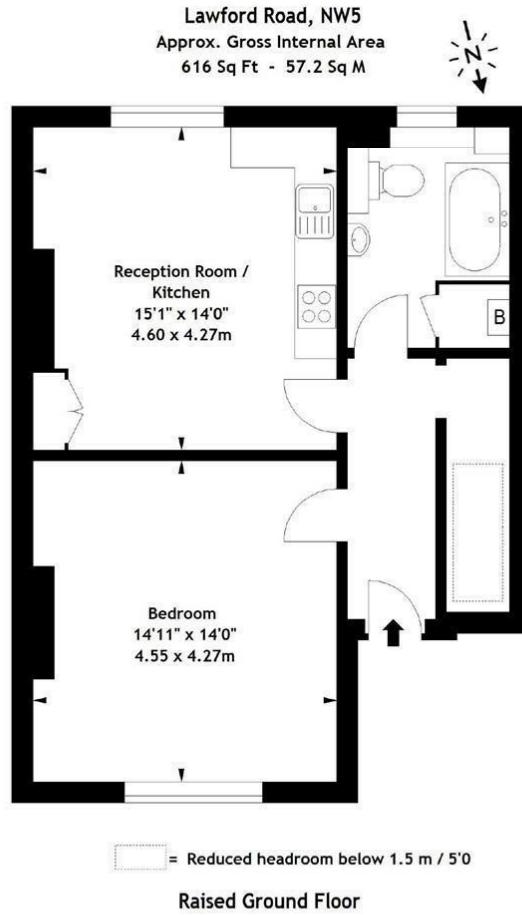
Camden Council - Band C

Minimum 12 month term

Holding deposit equivalent to 1 weeks rent

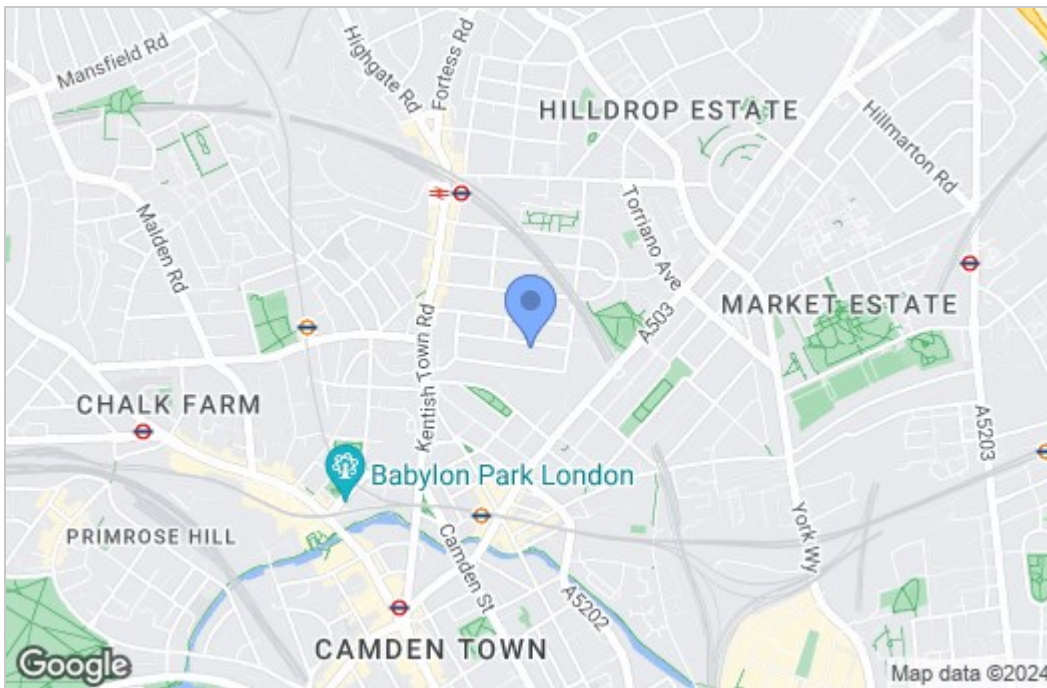
Full deposit equivalent to 5 weeks rent

Floor Plan

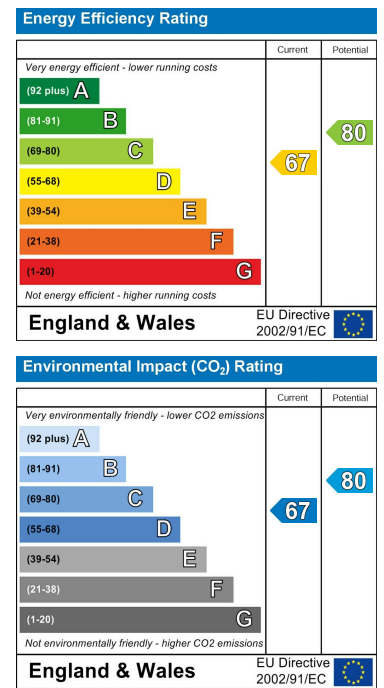


Measured in accordance with RICS guidelines. Every attempt is made to ensure accuracy, however all measurements are approximate. This floor plan is for illustrative purposes only and is not to scale.
© Datography Ltd 2018
Photographs * Floorplans * Virtual Tours
Tel: 0845 643 4401 www.datography.com

Area Map



Energy Efficiency Graph



These particulars, whilst believed to be accurate are set out as a general outline only for guidance and do not constitute any part of an offer or contract. Intending purchasers should not rely on them as statements of representation of fact, but must satisfy themselves by inspection or otherwise as to their accuracy. No person in this firm's employment has the authority to make or give any representation or warranty in respect of the property.

43- 45 Fortess Road, Kentish Town, London, NW5 1AD

Tel: 020 7284 4343 Email: als@matthewjames.co.uk www.matthewjames.co.uk