

MATTHEW JAMES

Residential Sales • Lettings • Management



Torriano Avenue, Kentish Town, NW5 2SE

£1,800 Per Calendar Month

A spacious newly decorated one bedroom upper ground floor flat well located for easy access to the shops, restaurants, local amenities and transport links of Kentish Town, including Kentish Town underground and overground stations and a host of bus routes. The flat features a good sized lounge, kitchen/diner, bathroom and double bedroom. Offered Furnished. Available Now.

Upper Ground Floor

Entrance into...

Reception Room/Diner



A spacious reception room/diner featuring linoleum flooring, a large storage cupboard with additional overhead storage, shelving and radiator.

Lounge



A good sized lounge featuring laminate wood effect flooring, storage cupboard and shelving, electric heater, sash window to the side of the property and media points.

Kitchen



A range of high gloss wall and base units with a

dark work surface incorporating a stainless steel sink and drainer with mixer tap, a fan assisted oven/grill with 4 ring gas hob and extractor canopy above, dishwasher, washing machine, freestanding fridge/freezer, double glazed casement windows to the rear of the property and inset spotlights.

Double Bedroom



A bright, spacious double bedroom featuring carpeted flooring, double glazed sash windows to the front of the property and radiator.

Bathroom



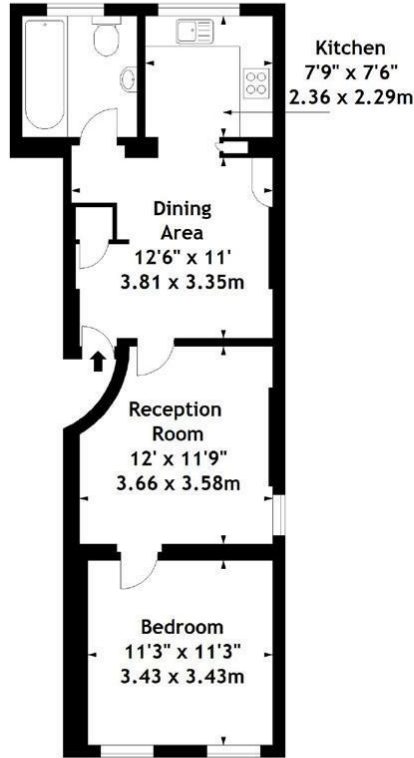
A stylish white suite with chrome fittings featuring a free standing bath with power shower and mixer taps, low flush WC, pedestal hand basin, heated wall mounted towel rail, frosted double glazed casement window to the rear of the property, airing cupboard and inset spotlights.

Additional Information

Newly Decorated
Minimum One Year Agreement
Holding Deposit £415
Full Deposit £2075
Camden Council Tax D

Floor Plan

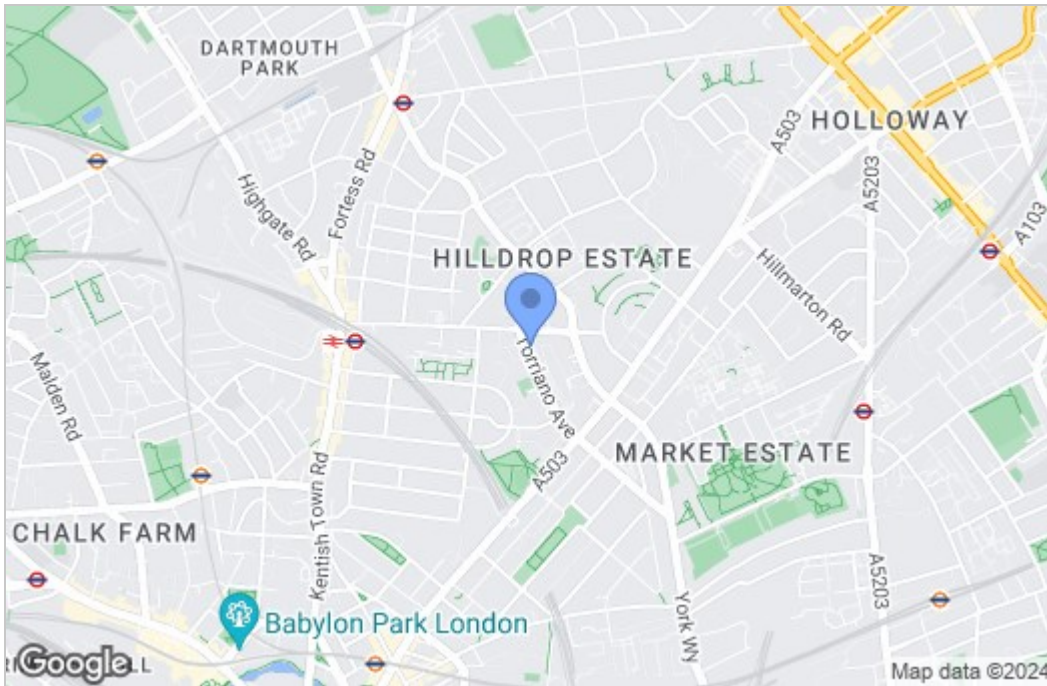
Torriano Avenue, NW5
 Approx. Gross Internal Area
 534 Sq Ft - 49.61 Sq M



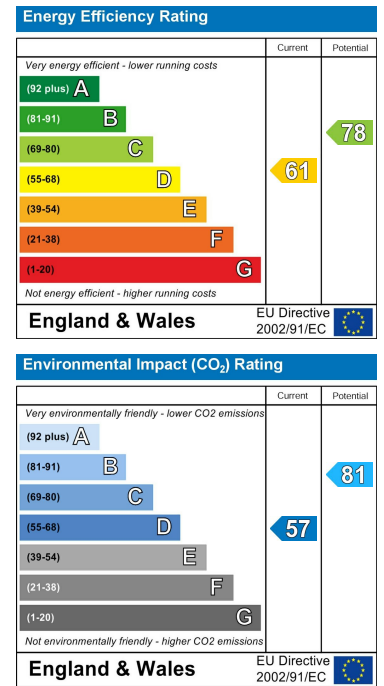
Ground Floor

Measured in accordance with RICS guidelines. Every attempt is made to ensure accuracy, however all measurements are approximate. This floor plan is for illustrative purposes only and is not to scale.
 © Datography Ltd 2017
 Photographs * Floorplans * Virtual Tours
 Tel: 0845 643 4401 www.datography.com

Area Map



Energy Efficiency Graph



These particulars, whilst believed to be accurate are set out as a general outline only for guidance and do not constitute any part of an offer or contract. Intending purchasers should not rely on them as statements of representation of fact, but must satisfy themselves by inspection or otherwise as to their accuracy. No person in this firm's employment has the authority to make or give any representation or warranty in respect of the property.