

MATTHEW JAMES

Residential Sales • Lettings • Management



Apollo Way, Stevenage, SG2 7QU

Asking Price £200,000

A large first floor purpose built apartment set within this modern development.

The flat requires some updating and offers good light and space and the added bonus of a balcony situated off of the lounge. It represents a great investment opportunity or first time home and is to be sold chain free.

First Floor

Entrance Hall

Laminate wood flooring, entryphone, storage cupboards.

Lounge



Laminate wood flooring, double glazed windows and door leading to balcony.

Kitchen



Dark wood wall and base units, laminate work surface incorporating a single sink and drainer unit with additional cutlery drainer, tiles splash backs, spaces for fridge freezer and dishwasher, double glazed windows to rear, gas central heating boiler.

Bedroom One



Laminate wood flooring, double glazed windows to front.

Bedroom Two



Laminate wood flooring, double glazed windows to front.

Bathroom



White suite comprising of panel enclosed bath with mixer tap, wash basin and low flush wc, tiled splash backs, extractor fan, double glazed window.

Additional Information

Service Charge £749.89 for 2024/25

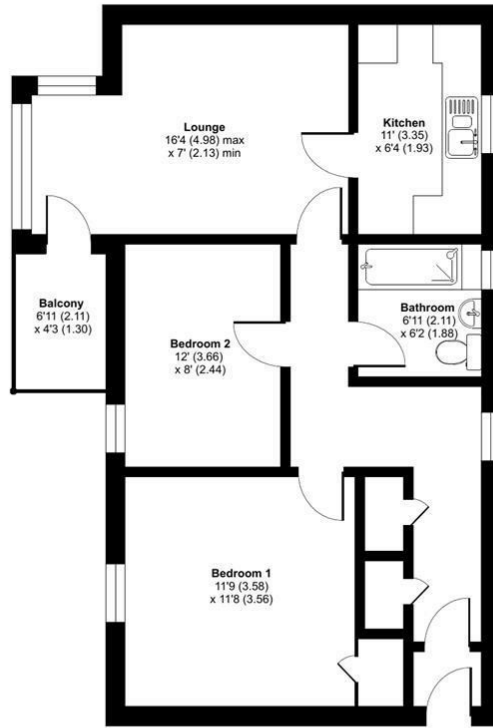
No Ground Rent

Stevenage Council Tax Band B

Floor Plan

Apollo Way, Stevenage, SG2

Approximate Area = 679 sq ft / 63 sq m
For identification only - Not to scale

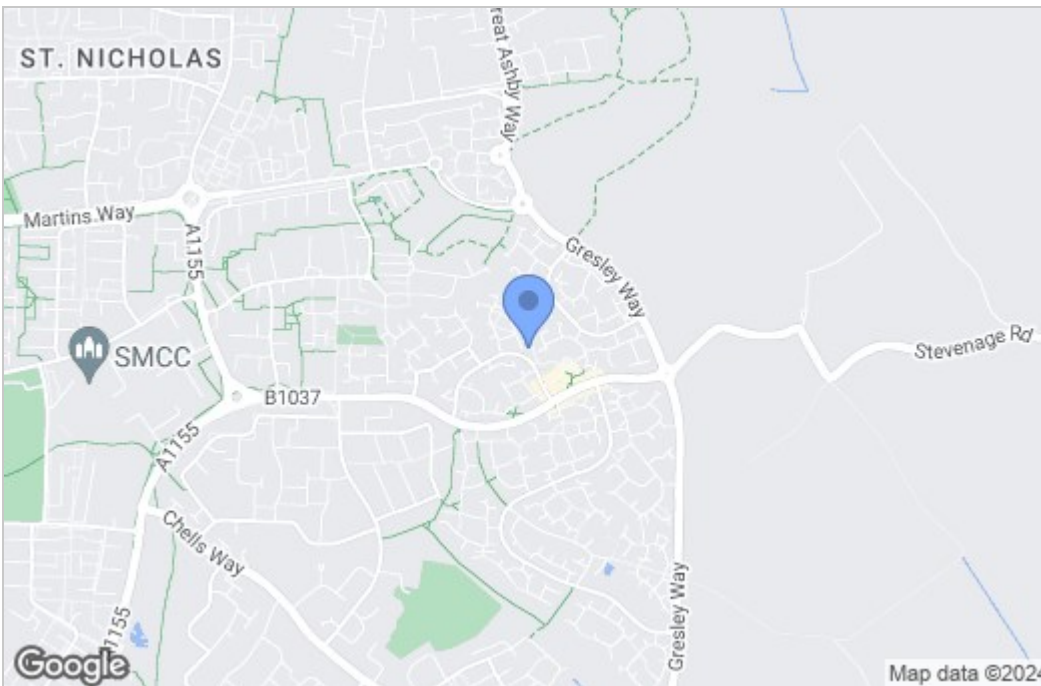


FIRST FLOOR

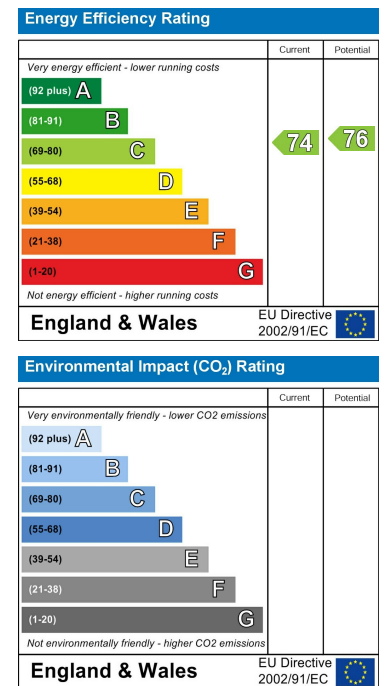


Floor plan produced in accordance with RICS Property Measurement Standards incorporating International Property Measurement Standards (IPMS2 Residential). © nichecom 2024. Produced for Matthew James. REF: 1101292

Area Map



Energy Efficiency Graph



These particulars, whilst believed to be accurate are set out as a general outline only for guidance and do not constitute any part of an offer or contract. Intending purchasers should not rely on them as statements of representation of fact, but must satisfy themselves by inspection or otherwise as to their accuracy. No person in this firm's employment has the authority to make or give any representation or warranty in respect of the property.

43- 45 Fortess Road, Kentish Town, London, NW5 1AD

Tel: 020 7284 4343 Email: als@matthewjames.co.uk www.matthewjames.co.uk