



Stoneyfields, Biddulph Moor, ST8 7NB.  
£200,000

Whittaker Est. 1930  
& Biggs

# Stoneyfields, Biddulph Moor, ST8 7NB.

A fantastic sized detached bungalow set upon an elevated plot adjacent to an open village green all within a much sought after semi-rural location. The property offers three bedrooms which offers versatility and much potential to reconfigure the existing layout to create an open plan living kitchen. However, for those needing to retain the existing accommodation, there is a good sized dining kitchen which overlooks the rear garden. The lounge has an outlook over the previously mentioned village green as well as an open fireplace. Although in need of updating there is great potential with the price reflecting the works required. The property is fully double glazed and warmed via oil fired central heating. Externally there are front and rear gardens which are laid to lawn with the rear having a two-tiered garden. There is also a side driveway which gives access to the larger than average detached garage with an adjoining garden room. Located a short distance from local village amenities and many rural walks nearby. This is the perfect opportunity for those looking for a bungalow at a realistic price with no upward chain.



### Entrance Porch

Having double UPVC double glazed doors with obscured glazed panelling. Timber glazed door giving access to entrance hall.

### Entrance Hall

4.11m reducing 22.2m x 3.90m reducing to 2.15m.  
Radiator.

### Lounge 15' 11" x 11' 1" (4.85m x 3.38m)

Having UPVC double glazed windows to front and side aspect with the front overlooking the adjacent green. Feature tiled fireplace having an open fire. Built in shelving unit. Coving to ceiling, radiator.

### Bedroom One 11' 7" x 10' 0" (3.54m x 3.05m)

Upvc double glazed window to the front and side aspect overlooking the gardens and village greenery. Radiator, coving to ceiling

### Bedroom Three 7' 11" x 7' 7" (2.41m x 2.30m)

Having UPVC double glazed window to side aspect, radiator. Access to loft space.

### Bedroom Two 10' 6" x 10' 6" (3.21m x 3.19m)

Built in wardrobes with overhead storage. Radiator, coving to ceiling.

### Bathroom 7' 7" x 7' 5" (2.31m x 2.27m)

Pedestal wash basin, panelled bath, low level WC. Radiator, airing cupboard housing hot water cylinder. Radiator, UPVC double glazed obscure window to side aspect.

### Dining Kitchen 10' 6" x 12' 1" (3.19m x 3.69m)

Having fitted base units & work surface incorporating a single drainer stainless steel sink unit, space for electric cooker, wall mounted cupboards, under counter storage. Space for fridge, space for dining table. Radiator, UPVC double glazed window to the rear

aspect overlooking the gardens. Oil fired central heating boiler. Space for electric cooker.

### Externally

There is a side driveway which allows ample off road parking that leads to a detached garage. There are front & rear gardens which are laid to lawn. Side access leading to the rear of the property.



Note:  
Council Tax Band: C

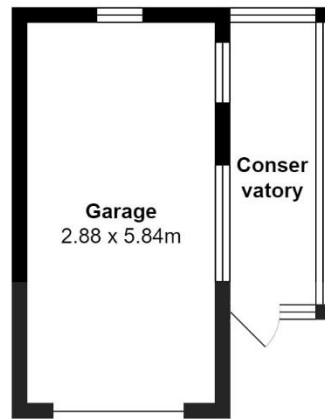
EPC Rating:

Tenure: believed to be Freehold



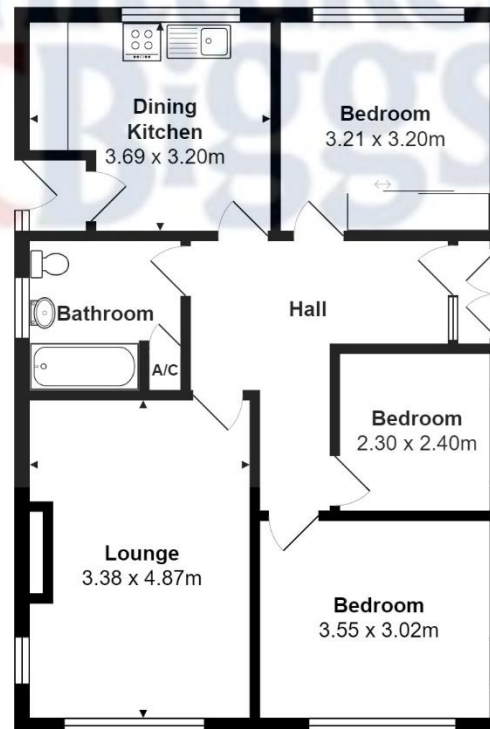






Total Area: 98.8 m<sup>2</sup>

All contents, positioning & measurements are approximate and for display purposes only  
Plan produced by Thorin Creed





**IMPORTANT:** Whittaker & Biggs for themselves and for the vendors or lessors of this property whose agents they are give notice that the particulars are produced in good faith and are set out as a general guide only and do not constitute any part of a contract and no person in the employment of Whittaker & Biggs estate agents has any authority to make or give any representation or warranty in relation to this property. The agent has not tested any apparatus, equipment, fittings or services and so cannot guarantee they are in working order, or fit for their purpose. The agent would also like to point out that the majority of the photographs used on their brochures and window displays are taken with non standard lenses.

34 High Street Biddulph Stoke-On-Trent Staffordshire ST8  
6AP  
T: 01782 522117  
E: [biddulph@whittakerandbiggs.co.uk](mailto:biddulph@whittakerandbiggs.co.uk)

[www.whittakerandbiggs.co.uk](http://www.whittakerandbiggs.co.uk)

Whittaker & Biggs Est. 1930