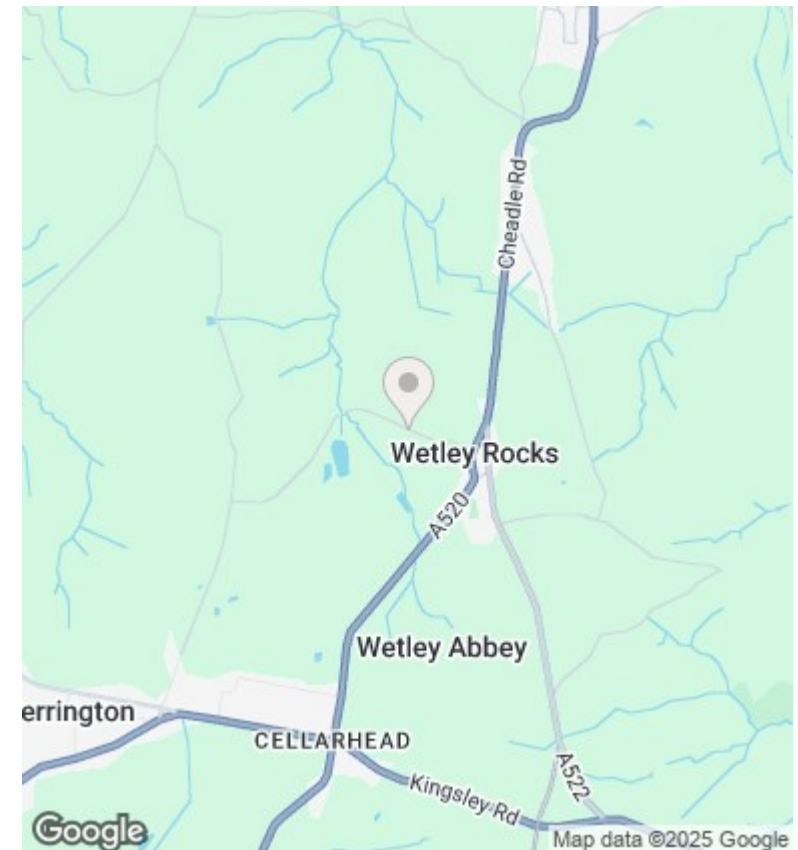
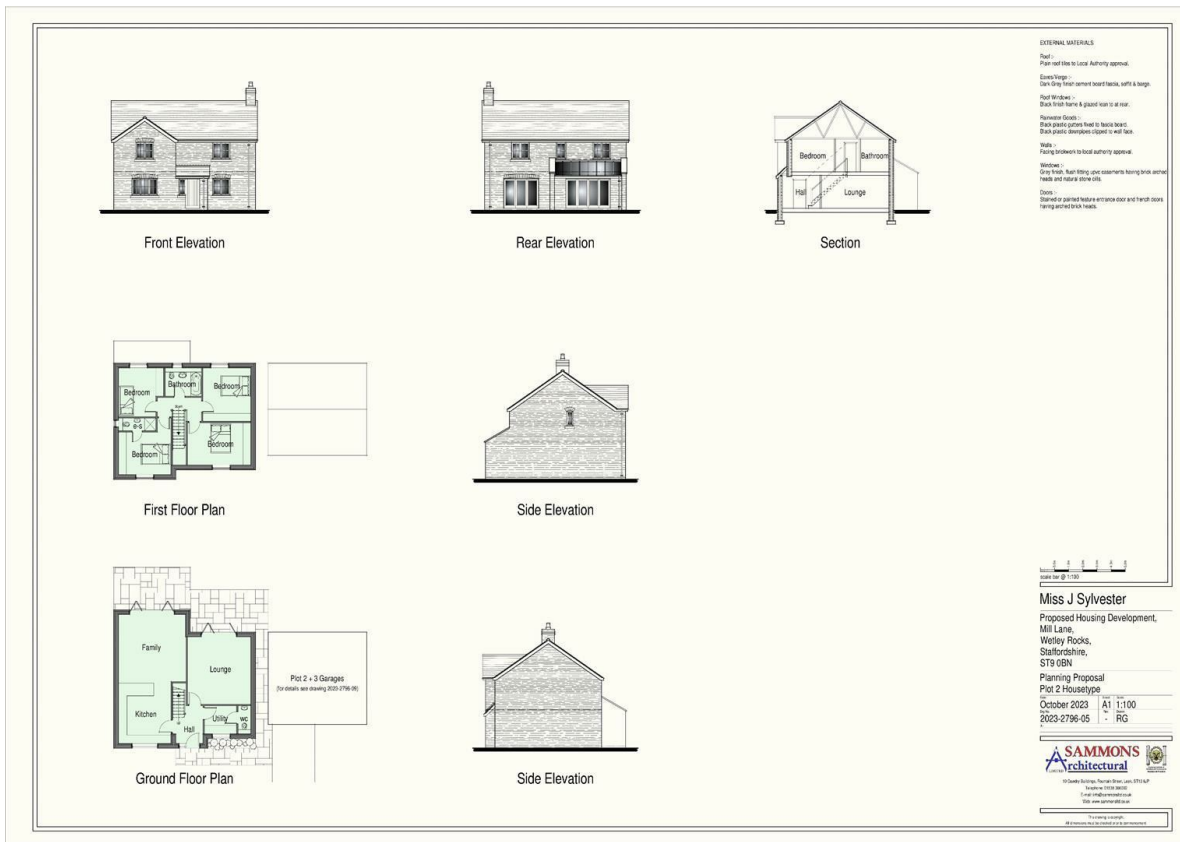


Land Of Mill Lane, Wetley Rocks, Stoke-On-Trent, Asking Price £600,000

- Site extending to approximately 0.93 of an acre.
- Each dwelling will have a single garage, driveway, front/rear garden
- Each dwelling will have a total floor area of 142.4m²
- Planning approval for 5, 4 bed detached dwellings
- The site is located opposite St Johns Primary School
- Semi-rural location
- The properties will be accessed via a shared private road



Directions

45-49 Derby Street, Leek, Staffordshire, ST13 6HU
01538 372006

Viewings

Viewings by arrangement only. Call 01538 372006 to make an appointment.

Council Tax Band

EPC Rating:

Energy Efficiency Rating		
	Current	Potential
Very energy efficient - lower running costs		
(92 plus) A		
(81-91) B		
(69-80) C		
(55-68) D		
(39-54) E		
(21-38) F		
(1-20) G		
Not energy efficient - higher running costs		
England & Wales	EU Directive 2002/91/EC	

leek@whittakerandbiggs.co.uk
www.whittakerandbiggs.co.uk