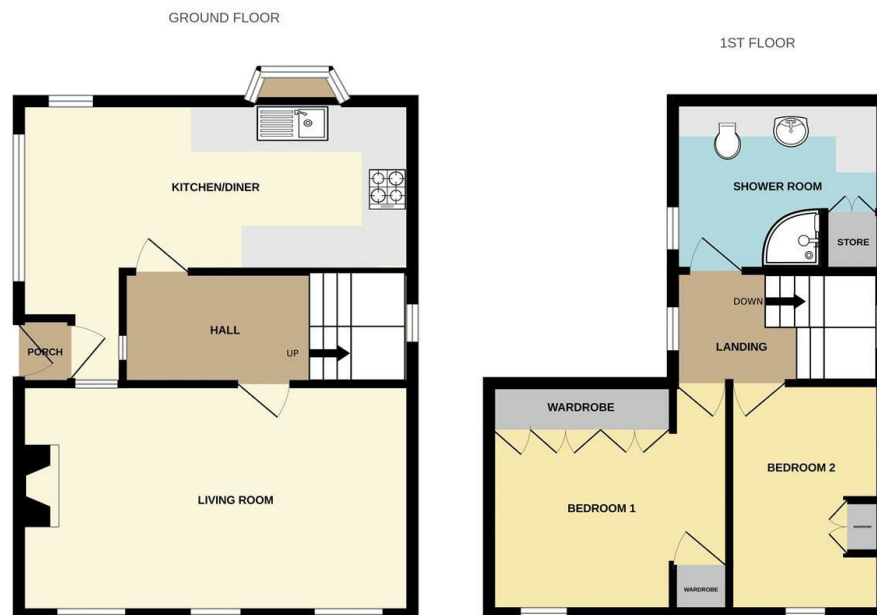


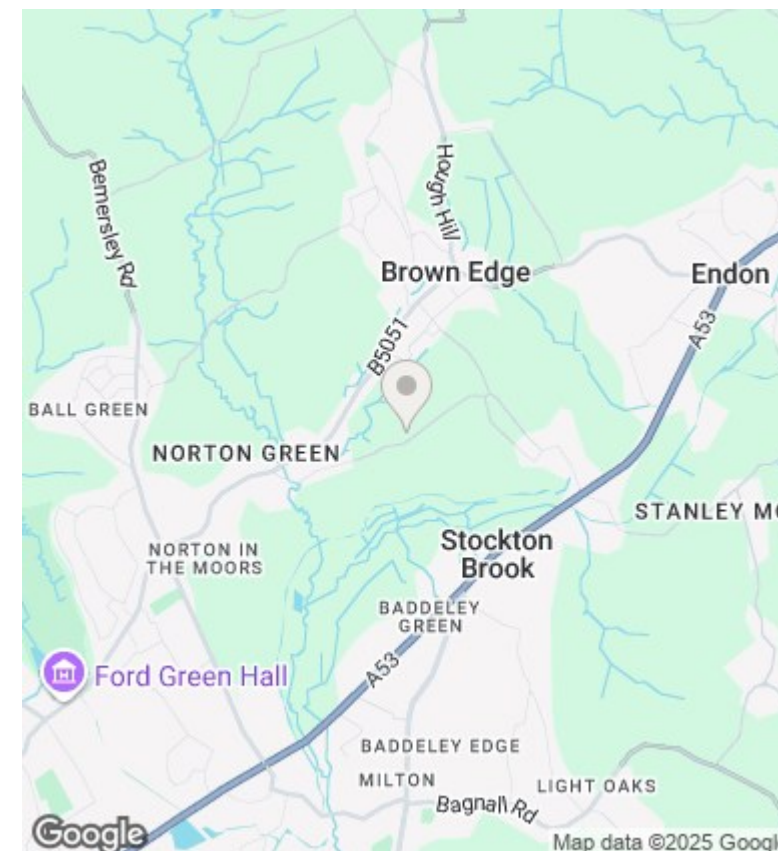


Keepers Cottage Ball Lane, Brown Edge, Stoke-On-Trent, Offers In The Region Of £385,000

- Characterful two bedroom detached cottage
- Large driveway with garage
- Lots of potential
- Stunning location with excellent views
- 19ft living room
- NO CHAIN
- Substantial plot
- Contemporary shower room



Whilst every attempt has been made to ensure the accuracy of the floorplan contained here, measurements of doors, windows, rooms and any other items are approximate and no responsibility is taken for any error, omission or mis-statement. This plan is for illustrative purposes only and should be used as such by any prospective purchaser. The services, systems and appliances shown have not been tested and no guarantee as to their operability or efficiency can be given.
Made with Metropix ©2025



Directions

From our Derby Street Leek office proceed along Haywood Street at the traffic lights continue straight ahead into Broad Street. At the mini roundabout adjacent to Morrison supermarket, continue straight ahead onto the A53 Newcastle Road. Follow this road out of the town through the villages of Longsdon and Endon and into Stockton Brook. At the main crossroads turn right into Moss Hill follow the road up the hill baring left into the one way system, continue

Viewings

Viewings by arrangement only. Call 01538 372006 to make an appointment.

Council Tax Band

D

EPC Rating:

Energy Efficiency Rating		
	Current	Potential
Very energy efficient - lower running costs		
(92 plus) A		
(81-91) B		
(69-80) C		
(55-68) D		
(39-54) E		
(21-38) F		
(1-20) G		
Not energy efficient - higher running costs		
England & Wales	EU Directive 2002/91/EC	