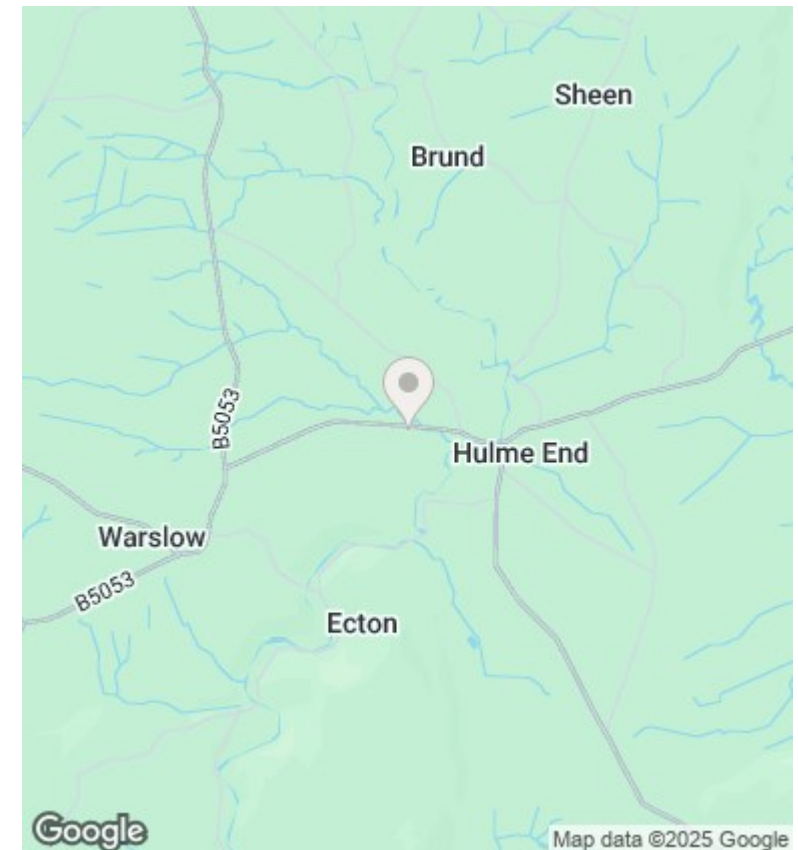
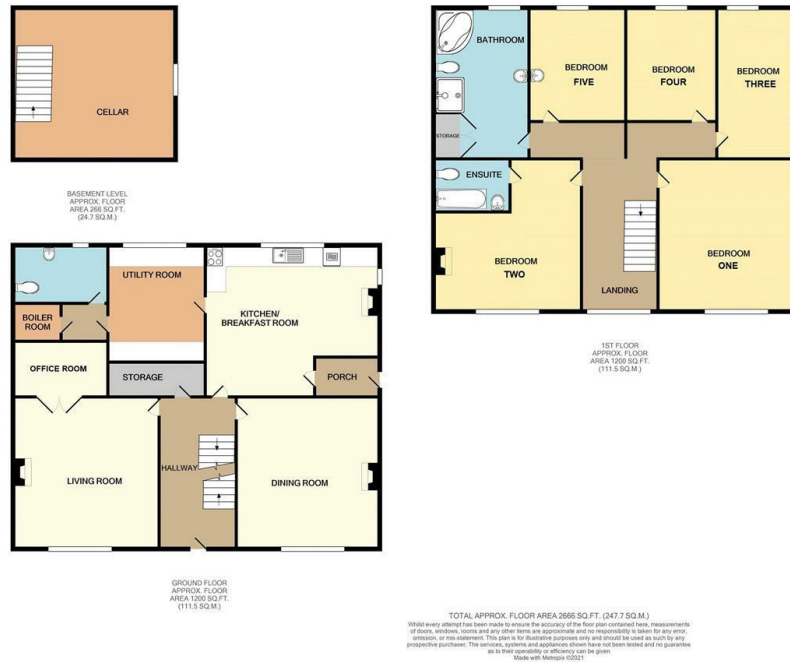




## Cawlow Farm New Road, Hulme End, Buxton, Derbyshire,

Asking Price £1,600,000

- Five bedroom detached farm house and two holiday barns
- Barn One accommodates up to seven guests
- Excellent views
- Nestled within 1.1 acres of formal gardens
- Barn Two accommodates up to five guests
- Formal gardens
- Located within the Peak National Park
- Grade 11 listed buildings (Circa 1860)
- Business opportunity



## Directions

From our Derby Street, Leek offices proceed out of the town on the A523 Ashbourne Road, following this road for approximately 4 miles and upon reaching Bottomhouse crossroads turn left opposite what was the Green Man public house into the B5053 signposted Onecote. Follow this road passing through the village of Onecote and through the village of Warslow (approximately 5.5 miles). After passing through the village of Warslow take the second turning

## Viewings

Viewings by arrangement only. Call 01538 372006 to make an appointment.

## Council Tax Band

F

## EPC Rating:

Energy Efficiency Rating		
	Current	Potential
Very energy efficient - lower running costs		
(92 plus) <b>A</b>		
(81-91) <b>B</b>		
(69-80) <b>C</b>		
(55-68) <b>D</b>		
(39-54) <b>E</b>		
(21-38) <b>F</b>		
(1-20) <b>G</b>		
Not energy efficient - higher running costs		
<b>England &amp; Wales</b>	EU Directive 2002/91/EC	