



Castle Inn Road, Congleton, CW12 3LP.
£375,000

Whittaker & Biggs Est. 1930

Castle Inn Road, Congleton, CW12 3LP.

A Modern constructed semi-detached home built in 2010 by respected local builders Humpries Builders.

This family home benefits from a tucked away position, away from the roadside, which is accessible via a single-track road. The property offers a picturesque location which enjoys an open outlook over an adjacent paddock to the front elevation with the rear adjoining Dane-In Shaw Brook, as well as Biddulph Valley walkway.

The property occupies a sizable plot with generous sized rear gardens, allowing potential for future extension.

Internally the property has an open living and dining kitchen with a defined dining area having UPVC patio doors giving access onto the paved patio area and gardens. The kitchen is well equipped with a range of units. The accommodation also includes a spacious entrance hall, ground floor cloaks and bay fronted lounge.

To the first-floor galleried landing there are three double bedrooms with the main bedroom having en suite shower room and built in wardrobe. All the bedrooms each enjoy a pleasant outlook.

The property has the additional benefit of a heat source pump central heating system as well as underfloor heating to the entity of the ground floor.

Well placed for Staffordshire and Cheshire towns of Congleton, Biddulph, Macclesfield and Leek, as well as having the convenience of a family run Gastro pub nearby.



Offered for sale with no upward chain, a viewing appointment is advisable to appreciate the location and potential of this property.

Entrance Hall

Having a tiled floor, stairs off to first floor landing. Composite front entrance door with obscured glazed panel and matching side panel.

Ground Floor Cloaks

Having a low-level WC and pedestal wash and basin, tiled floor, extractor fan. Store cupboard housing heat source pump controls.

Lounge 16' 11" x 11' 2" (5.15m into bay x 3.40m)

Having a UPVC double glazed walk-in bay window to the front aspect overlooking the adjacent fields. UPVC double glazed window to the side aspect, tiled flooring with underfloor heating, wall mounted light points, recess for electric fire opening through into the open kitchen diner.

Open Plan Kitchen Diner 20' 2" x 9' 6" (6.15m into kitchen x 2.89m extending to 4.40m)

Having a range of wall mounted cupboard and base units with worksurface over incorporating a one and a half bowl single drainer sink with mixer tap over. Range of integral appliances including a ceramic hob with chimney style stainless steel extractor fan over, double electric oven and combination grill. Plumbing for washing machine and dishwasher. Incorporating a pull out larder store. Glazed display cabinetry, tiled floor, UPVC double glazed windows to the rear aspect overlooking the gardens, recessed lighting.

Defined living and dining space

Having a UPVC double glazed window to the rear aspect, UPVC double glazed patio doors to the side aspect giving access to the rear patio and gardens.

Underfloor central heating to the kitchen and dining area.

First Floor Galleried Landing

Having access to loft, radiator. Airing cupboard housing heat pump cylinder with storage over.

Bedroom One 11' 2" x 11' 5" (3.41m x 3.49m plus wardrobes and en-suite)

Having a double glazed window to the front aspect with views over the adjacent fields. Radiator. Fitted wardrobe with shelving and hanging rail.

En-suite Shower Room 8' 3" x 2' 11" (2.51m x 0.90m)

Having an enclosed shower cubicle with a thermostatically controlled shower, WC, pedestal wash hand basin. Part tiled walls, extractor fan and recessed lighting to ceiling, chrome heated towel radiator.

Bedroom Two 10' 8" x 9' 2" (3.26m x 2.79m)

Having a UPVC double glazed window to the rear aspect overlooking the adjacent woodland. Radiator.

Bedroom Three 9' 6" x 9' 11" (2.90m x 3.01m)

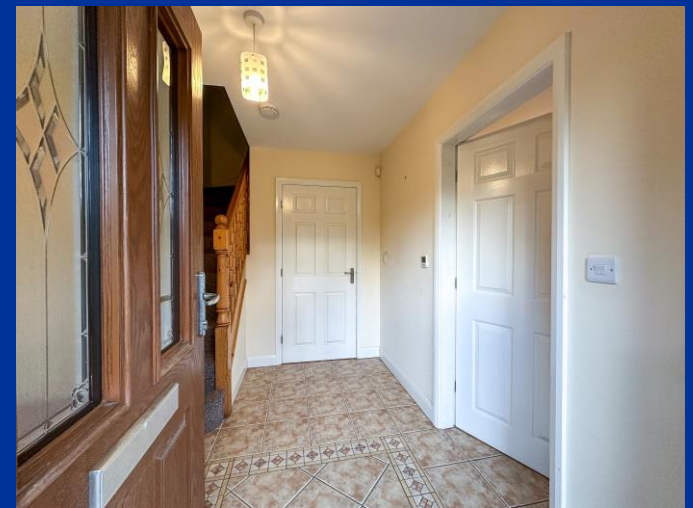
Having a UPVC double glazed window to the rear aspect overlooking the gardens and adjoining woodland. Radiator.

Family Bathroom 6' 11" x 7' 8" (2.12m x 2.33m)

Having a white suite comprising of panelled bath, WC, wash hand basin. Half tiled walls, shaver socket, chrome heated towel radiator, tiled floor, extractor fan, UPVC double glazed obscured window to the front aspect.

Externally

The property is approached from a single-track road leading onto a shared access track. There is a concrete sectional detached garage/workshop as well as parking in abundance courtesy of the side driveway. Timber gated side access through to the rear garden.



Rear Garden

Laid to lawn with an adjoining Indian stone paved patio. Fully Enclosed offering a good degree of privacy with an open rear aspect which adjoins Bosley Brook & Biddulph Valley Walkway.

Note:

Council Tax Band: D

EPC Rating: C

Tenure: freehold





FLOORPLAN TO GO HERE



IMPORTANT: Whittaker & Biggs for themselves and for the vendors or lessors of this property whose agents they are give notice that the particulars are produced in good faith and are set out as a general guide only and do not constitute any part of a contract and no person in the employment of Whittaker & Biggs estate agents has any authority to make or give any representation or warranty in relation to this property. The agent has not tested any apparatus, equipment, fittings or services and so cannot guarantee they are in working order, or fit for their purpose. The agent would also like to point out that the majority of the photographs used on their brochures and window displays are taken with non standard lenses.

16 High Street
 Congleton
 Cheshire
 CW12 1BD
 T: 01260 273241
 E: congleton@whittakerandbiggs.co.uk

www.whittakerandbiggs.co.uk

Est. 1930
**Whittaker
 & Biggs**