



Ivor Street

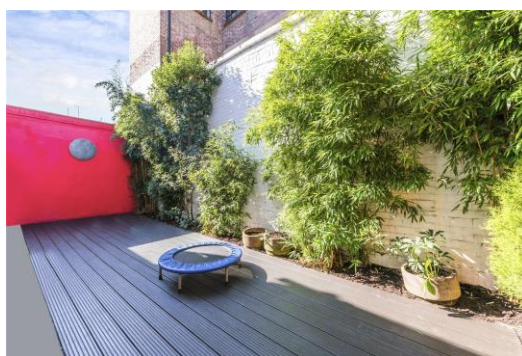
London, NW1

Offer in excess
£2,000,000

A truly wonderful, double fronted, six bedroom period house arranged over three floors. This laterally spacious and stylishly presented property (2383 sq ft) boasts well laid out, generously proportioned rooms throughout.

Accommodation comprises of six double bedrooms, the master being en-suite, two receptions, fully fitted kitchen, two further bathrooms, two WC's, walk in wardrobe.

CHESTERTONS
Camden & Primrose Hill



Ivor Street

London, NW1

- Freehold
- Six bedrooms
- Three bathrooms
- Excellent location
- Double fronted



Ivor Street is very well located in a quiet street and benefits from the excellent amenities of both Camden and Kentish Town. It is in the catchment area for Camden School for girls and Hawley Primary school. Both are excellent schools.

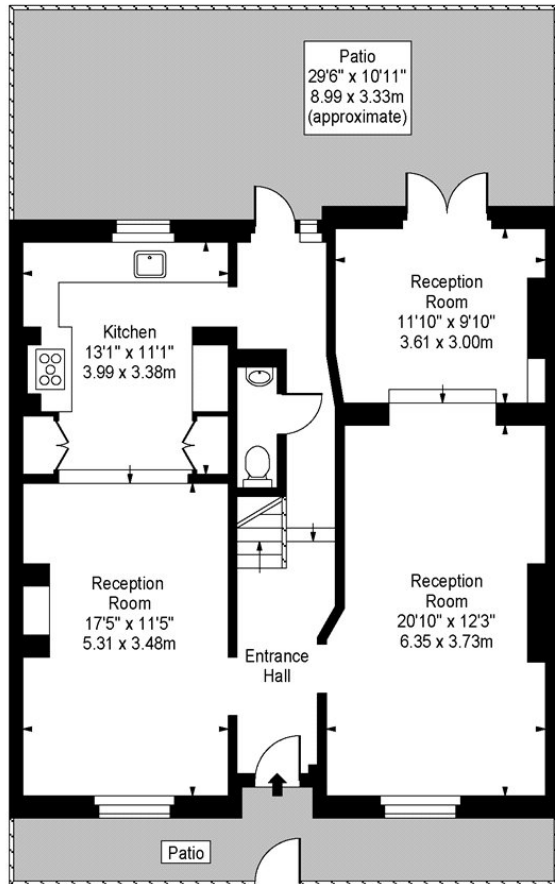
Tenure: Freehold

Chestertons Camden & Primrose Hill

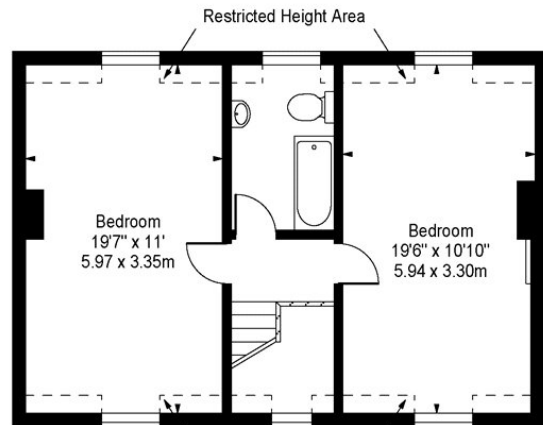
99-101 Parkway
London
NW1 7PP
sales.camden@chestertons.com
020 7267 2053
chestertons.com

A member of
 **OnTheMarket.com**

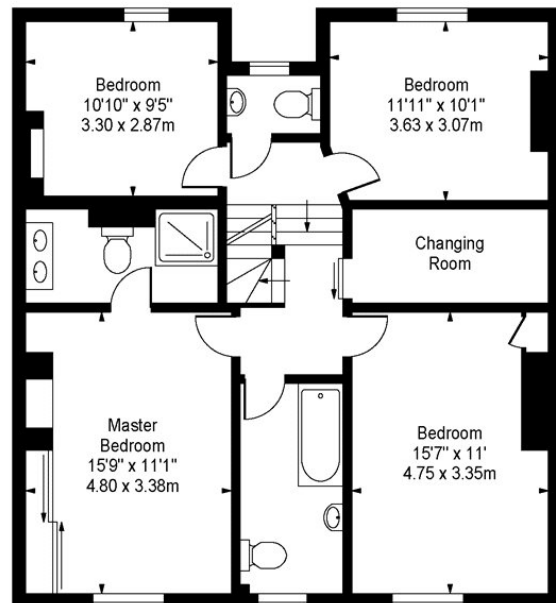
Ivor Street



Ground Floor
Gross Internal Area - 913 Sq Ft - 84.82 Sq M



Second Floor
Gross Internal Area - 553 Sq Ft - 51.37 Sq M



First Floor
Gross Internal Area - 917 Sq Ft - 85.19 Sq M

Approx Gross Internal Area 2383 Sq Ft - 221.38 Sq M
(Including Restricted Height Area)

For Illustration Purposes Only - Not To Scale
www.goldlens.co.uk
Ref. No. 004081A

Chesterton Global Ltd trading as Chestertons for themselves and for the vendor of this property whose agents they are, give notice that (i) these particulars do not constitute any part of an offer or contract, (ii) all statements contained within these particulars are made without responsibility on the part of Chestertons or the vendor, (iii) whilst made in good faith, none of the statements contained within these particulars are to be relied upon as a statement or representation of fact, (iv) any intending purchasers must satisfy themselves by inspection or otherwise as to the correctness of each of the statements contained within these particulars, (v) the vendor does not make or give either Chestertons or any person in their employment any authority to make or give representation or warranty whatsoever in relation to this property. Wide angle lenses may be used. ©Copyright Chestertons | Chesterton Global Ltd | Registered Office 3rd Floor, Connaught House, 1-3 Mount Street, Mayfair, London, W1K 3NB Registered Company Number 05334580.