



# Windsor Road

London, N7

£1,295,000 Asking Price

A wonderfully bright four double bedroom period house complete with a charming 30ft south-facing garden.

This delightful house is well presented and offers well laid out and generously proportioned rooms along with high ceilings and many period features.

The ground floor boasts a 26ft double reception that leads directly out (via the kitchen) to the pretty rear garden.

The upper floors have four double bedrooms and two bathrooms. Furthermore, there is a spacious utility room which also leads directly onto the garden.

The back of the house features unbroken tree lined views southwards down the gardens of eburne road.

**CHESTERTONS**





# Windsor Road

London, N7

- Excellent location
- Four double bedrooms
- South-facing garden
- Double reception
- Wonderfully bright





Windsor Road is a quiet street and has many excellent amenities in close proximity. There is a vast array of shops, cafes, pubs and restaurants in the area. The house is within the catchment area for the 'outstanding' ofsted rated Grafton primary school on the adjoining Eburne road. Finsbury Park, Hampstead Heath and Waterlow Park are all nearby. Transport links are excellent with buses, underground and overground trains all in abundance.

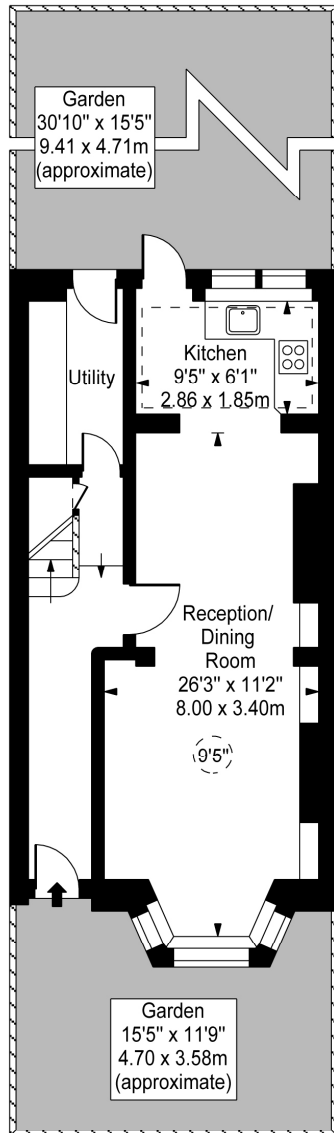
---

**Tenure:** Freehold  
**Service Charge:** £0  
**Ground Rent:** £0

---

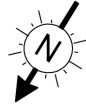
***Chestertons Camden & Primrose Hill Sales***

99-101 Parkway  
Camden  
London  
NW1 7PP  
sales.camden@chestertons.com  
020 7267 2053  
chestertons.com

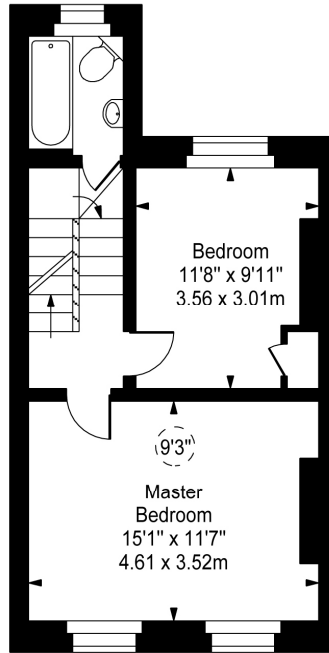


Ground Floor  
Gross Internal Area - 475 Sq Ft - 44.13 Sq M

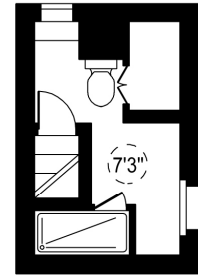
**Windsor Road**



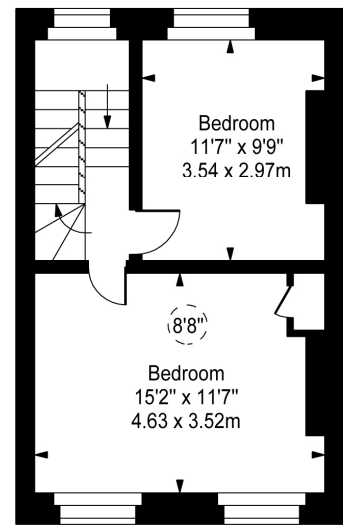
- Ceiling Height



First Floor  
Gross Internal Area - 390 Sq Ft - 36.23 Sq M



Third Floor  
Gross Internal Area - 88 Sq Ft - 8.18 Sq M



Second Floor  
Gross Internal Area - 357 Sq Ft - 33.16 Sq M

**Approx Gross Internal Area 1310 Sq Ft - 121.70 Sq M**

For Illustration Purposes Only - Not To Scale

[www.goldlens.co.uk](http://www.goldlens.co.uk)

Ref. No. 014803AG

