



Northpoint Square

London, NW1

Asking Price £600,000

Located within this popular gated development is this recently refurbished two bedroom ground floor apartment offering bright and spacious living throughout. The property features a bright and expansive reception room that seamlessly connects to a modern, fully fitted kitchen. A large bay window floods the living area with natural light while offering direct access to a communal garden. The apartment boasts two generously sized bedrooms, including a principal bedroom with en-suite shower room and built-in storage. A second stylish bathroom serves the rest of the apartment and additional built-in wardrobes and storage cupboards provide ample storage space.

CHESTERTONS



Northpoint Square

London, NW1

- Ground Floor
- Recently Refurbished
- Two Bedroom
- Excellent Location
- Chain Free



Northpoint Square is situated within close proximity to Kentish Town Station and Camden Road Overground station. It is with easy access to the green open spaces of Regents Park & Parliament Hill Fields and the vibrant developments in Kings Cross where there are many stylish shops, boutiques, and restaurants, as well as new squares for recreation and an arts centre. It is within the catchment area for Camden School for Girls.

Tenure: Leasehold with 103 years remaining

Service Charge: £4,700 per annum

Ground Rent: £250 per annum

Local Authority: Camden

Council Tax Band: F

Score	Energy rating	Current	Potential
92+	A		
81-91	B		
69-80	C	79 C	79 C
55-68	D		
39-54	E		
21-38	F		
1-20	G		

Chestertons Camden & Kentish Town Sales

99-101 Parkway

Camden

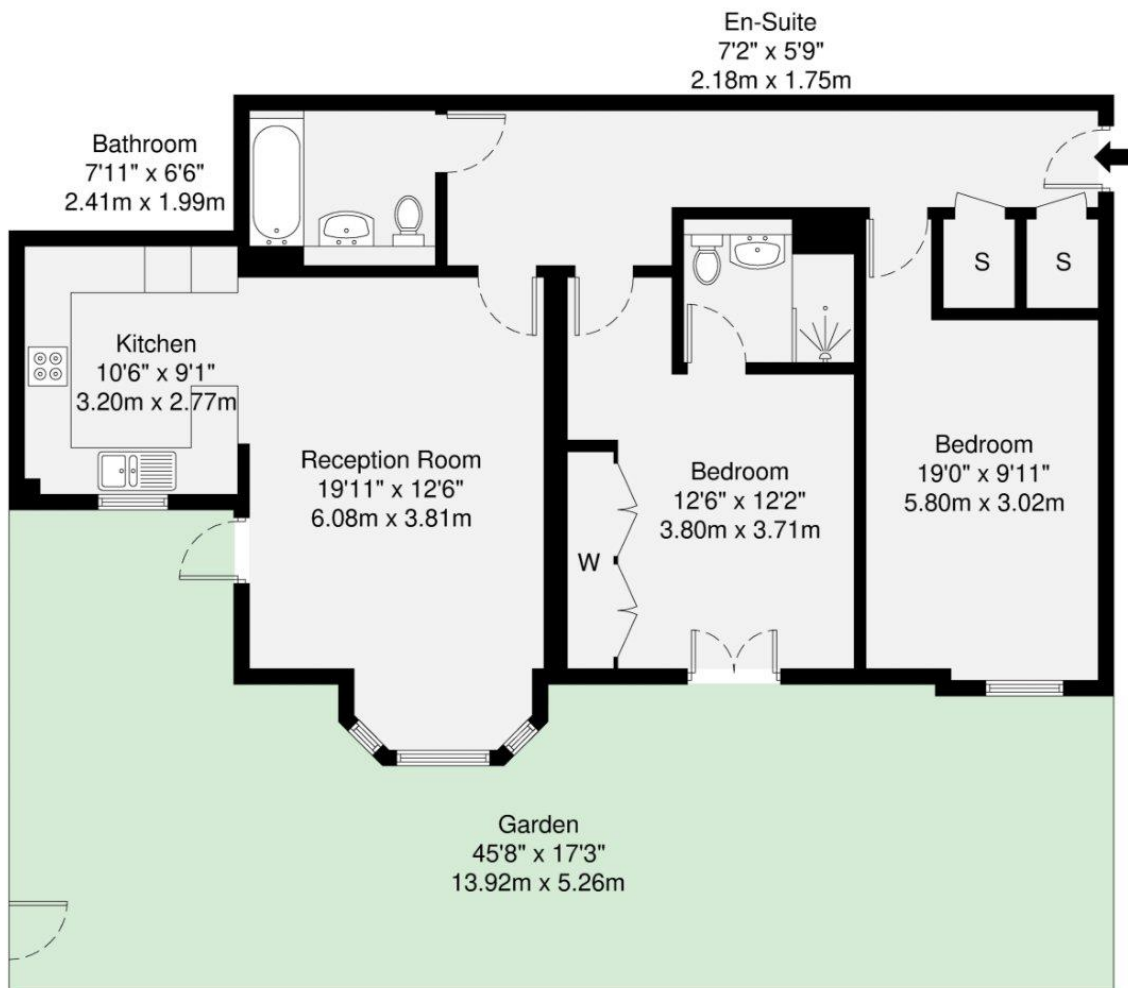
London

NW1 7PP

camden@chestertons.co.uk

020 7267 2053

chestertons.co.uk



Ground Floor

GROSS INTERNAL AREA (GIA)
The footprint of the property
90.6 sq m / 975 sq ft

TOTAL STORAGE SPACE
Storage and wardrobe total area
4.0 sq m / 43 sq ft

EXTERNAL FEATURES
Garden, Balcony, Terrace, Verandah etc.
73.2 sq m / 787 sq ft

RESTRICTED HEAD HEIGHT
Limited use area under 1.5m
0.0 sq m / 0.0 sq ft

Disclaimer : Floorplan measurements are approximate and are for illustrative purposes only. While we do not doubt the floorplan accuracy and completeness, you or your advisors should conduct a careful, independent investigation of the property in respect of monetary valuation.

Maison
VUE

