



Prince Regent Mews

London, NW1

Asking Price £550,000

A bright, airy and well-located top floor apartment in very close proximity to the fantastic amenities of Central London. Situated in a gated complex and offered in very good condition - the property offers two bedrooms, a spacious and airy reception room, fully fitted kitchen and bathroom. Share of freehold and being sold chain-free.

CHESTERTONS



Prince Regent Mews

London, NW1

- Gated development
- Two bedrooms
- Bright and well-presented
- Chain-free
- Share of freehold
- Day porter



Prince Regent Mews is superbly located, moments from both Warren Street and Euston. The area has excellent transport links and a vast array of shops and restaurants nearby. Several university campuses are located within the area including UCL, LSE, LBS and Westminster University. The green open spaces of Regents Park are in close proximity. There is a day porter on site.

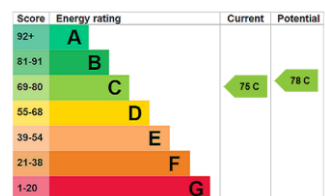
Tenure: Share of freehold (lease 88yrs)

Service Charge: £3400 per annum

Ground Rent: £0

Local Authority: Camden

Council Tax Band: E



Chestertons Camden & Kentish Town Sales

99-101 Parkway

Camden

London

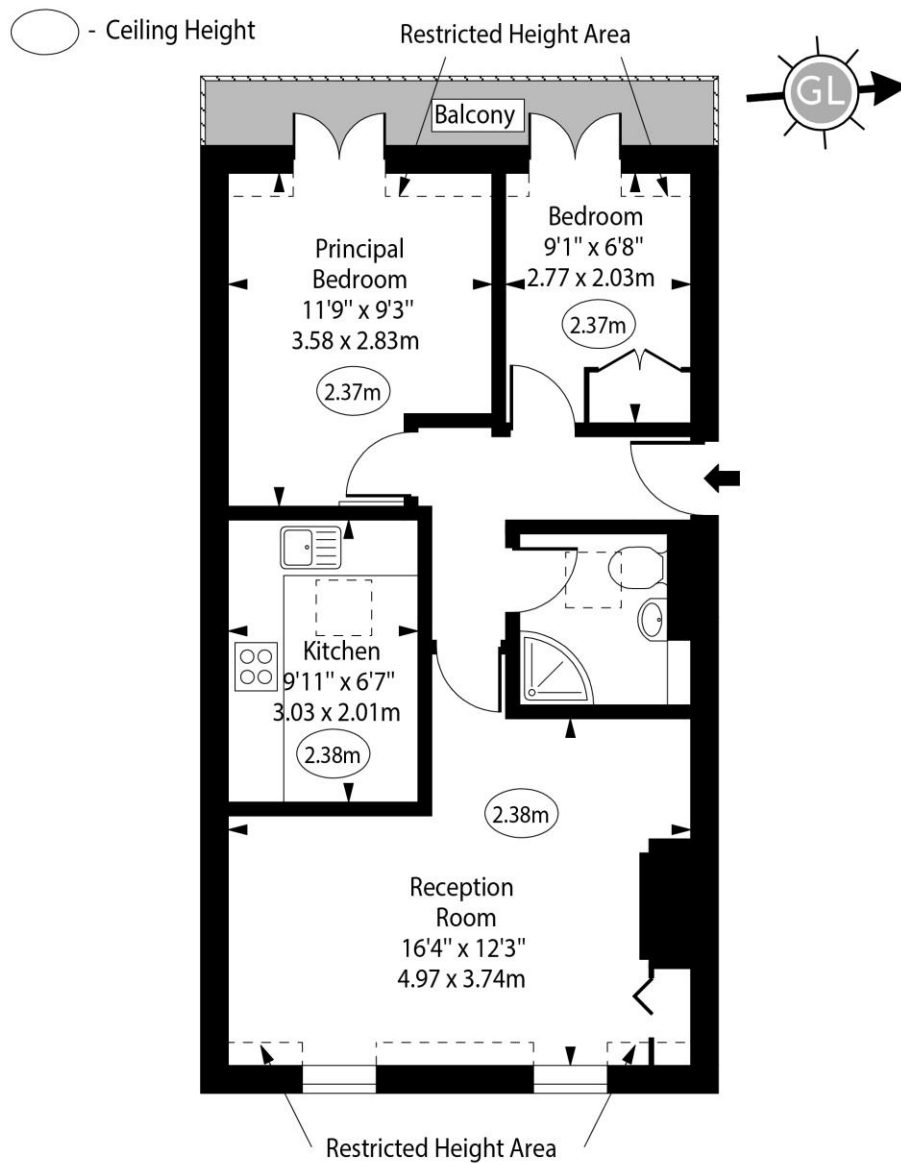
NW1 7PP

camden@chestertons.co.uk

020 7267 2053

[chestertons.co.uk](https://www.chestertons.co.uk)

Prince Regent Mews



Gross Internal Area - 520 Sq Ft - 48.31 Sq M

Approx Gross Internal Area

503 Sq Ft - 46.73 Sq M

Approx. Floor Area Including Restricted Heights

520 Sq Ft - 48.31 Sq M

Every attempt has been made to ensure the accuracy of the floor plan shown. However, all measurements, fixtures, fittings, and data shown are approximate interpretations and for illustrative purposes only. Measured according to the RICS. Not To Scale.

www.goldlens.co.uk

Ref. No. 029298J

