



# Arlington Road

London, NW1

Asking Price £410,000

A bright and well-presented one-bedroom apartment located on the first and second floor of a charming period building. The layout includes a spacious open-plan kitchen and reception area, a double bedroom and a modern bathroom.

**CHESTERTONS**





# Arlington Road

## London, NW1

- One Bedroom
- Excellent Location
- Grade II Listed Building
- Good Condition
- Chain free



Arlington Road is part of the Mornington Crescent traffic calmed area making it very quiet yet it is situated in the heart of Camden Town. You have all the retail and entertainment offerings of Camden on your doorstep, the West End nearby and the green open space of Regents Park are nearby. Camden Town station and Mornington Crescent, on the northern line, provides good transport links as well as numerous local bus routes.

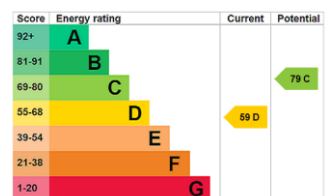
**Tenure:** Leasehold 101 years 2 months

**Service Charge:** £800

**Ground Rent:** £10

**Local Authority:** Camden

**Council Tax Band:** C



### *Chestertons Camden & Kentish Town Sales*

99-101 Parkway

Camden

London

NW1 7PP

camden@chestertons.co.uk

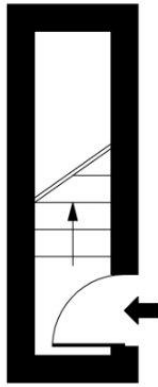
020 7267 2053

[chestertons.co.uk](https://www.chestertons.co.uk)

## Arlington Road

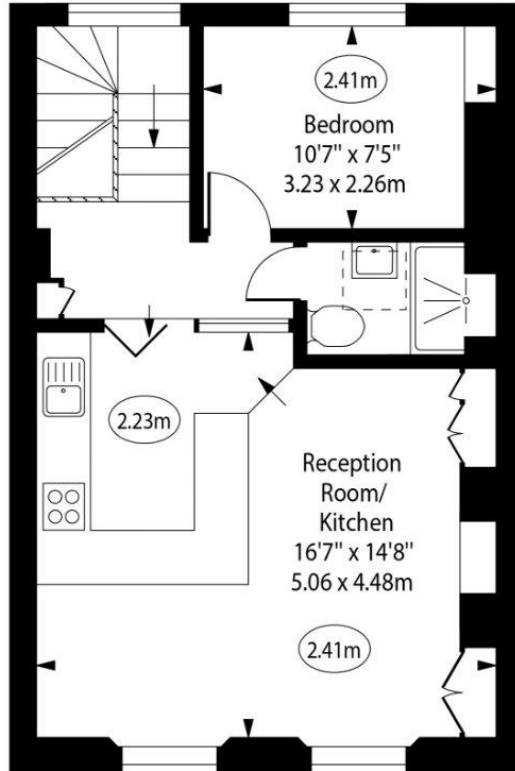


○ - Ceiling Height



First Floor  
Entrance

Gross Internal Area - 20 Sq Ft - 1.86 Sq M



Second Floor

Gross Internal Area - 436 Sq Ft - 40.50 Sq M

Approx Gross Internal Area

456 Sq Ft - 42.36 Sq M

Every attempt has been made to ensure the accuracy of the floor plan shown. However, all measurements, fixtures, fittings, and data shown are approximate interpretations and for illustrative purposes only. Measured according to the RICS. Not To Scale.

[www.goldlens.co.uk](http://www.goldlens.co.uk)

Ref. No. 029183J

