



Chester Close South

London, NW1

Asking Price £750,000

A lateral two-bedroom apartment situated moments from the open spaces of Regent's Park.

Located off a private residential road to the east of Regent's Park, the property features a spacious reception room, separate kitchen, two well-proportioned double bedrooms and a family bathroom. Further benefits include a secure underground parking space, daytime porter and an external storage cupboard.

CHESTERTONS



Chester Close South

London, NW1

- Two Bedrooms
- Secure Underground Parking
- Chain Free
- Secure Purpose Built Block
- Moments From The Regent's Park



Additionally, residents of Chester Close South can, by subscription, access the private Park Square and Park Crescent gardens - tranquil green spaces reserved exclusively for those living on the Crown Estate.

Chester Court is superbly located on Albany Street and is within very close proximity to the delightful Regent's Park. Great Portland Street underground station and the fantastic facilities of the West End and Marylebone are easily accessible.

Tenure: Leasehold 124 years 7 months

Service Charge: £3650

Ground Rent: £110

Local Authority: Camden

Council Tax Band: F

Score	Energy rating	Current	Potential
92+	A		
81-91	B		
69-80	C	79 C	79 C
55-68	D		
39-54	E		
21-38	F		
1-20	G		

Chestertons Camden & Kentish Town Sales

99-101 Parkway

Camden

London

NW1 7PP

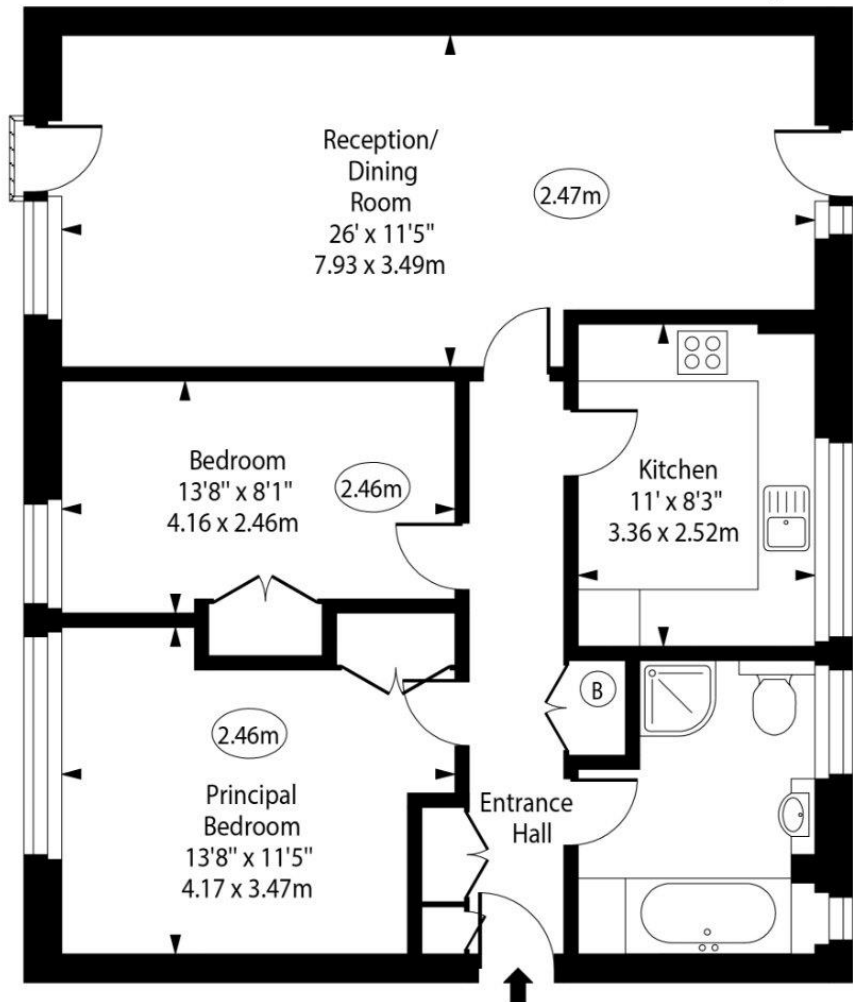
camden@chestertons.co.uk

020 7267 2053

chestertons.co.uk

Chester Close South

○ - Ceiling Height



First Floor

Gross Internal Area - 835 Sq Ft - 77.57 Sq M

Approx Gross Internal Area 835 Sq Ft - 77.57 Sq M

Every attempt has been made to ensure the accuracy of the floor plan shown. However, all measurements, fixtures, fittings, and data shown are approximate interpretations and for illustrative purposes only.

Measured according to the RICS IPMS 2. Not To Scale.

www.goldlens.co.uk

Ref. No. 028430J

