



Canteloves Road

London, NW1

Asking Price Of £450,000

An elegant one-bedroom apartment on the garden level of a grand Victorian villa on a quiet road in the Camden Square Conservation area within easy reach of Camden and Kings Cross and the benefit of direct access to a gated shared garden. The apartment is well presented with generous proportions and is classically appointed throughout with bedroom, bathroom, separate kitchen and sitting room with French doors to the garden.



Canteloves Road

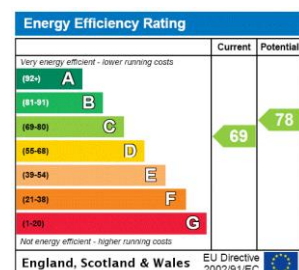
London, NW1

- CHAIN FREE
- One bedroom apartment
- Direct access to (gated) shared garden
- Elegantly presented in good order.
- Quiet tree lined road
- Close to Kings Cross, Camden Town and Kentish Town



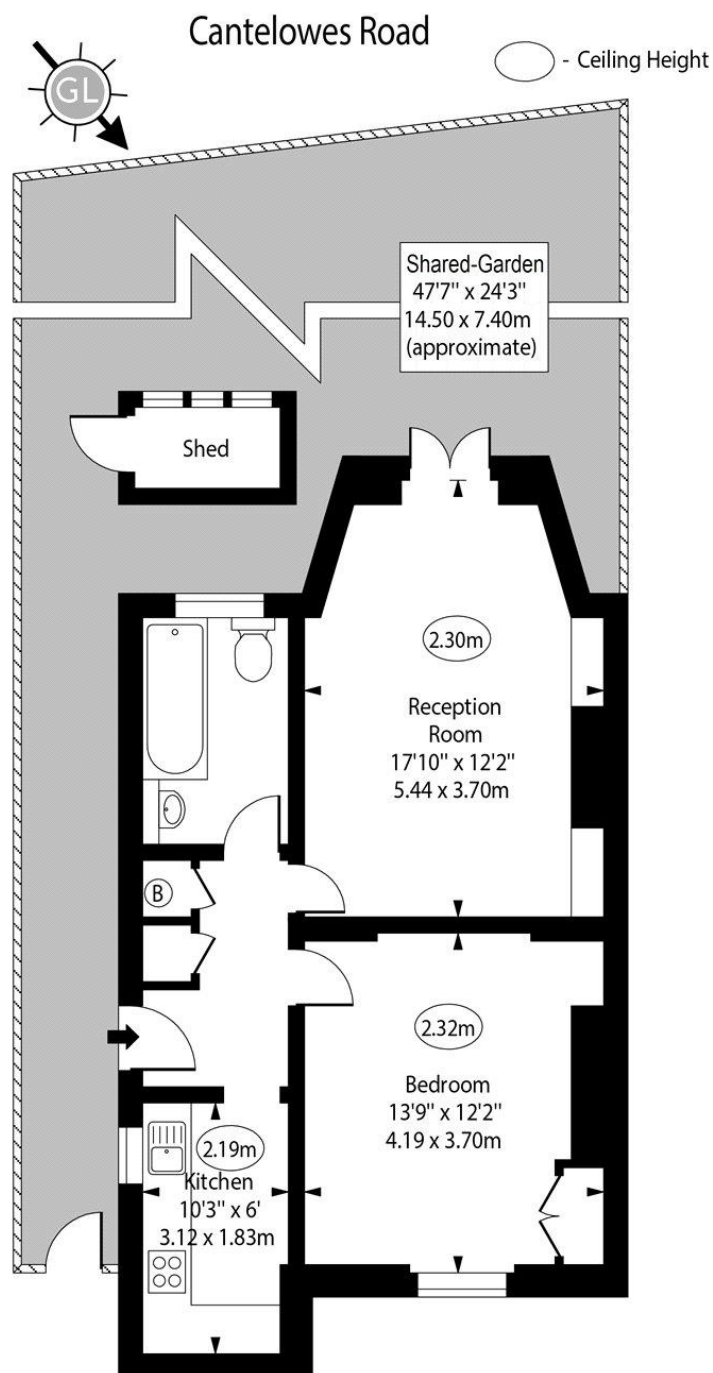
Cantelowes Road is a quiet tree lined road of statuesque Victorian mansions and is perfectly placed to take advantage of the excellent amenities of Camden Town and neighbouring Kings Cross and Kentish Town. Transport is excellent with Piccadilly line, Northern Line, Overground and Mainline stations in easy reach as well as St Pancras International

Tenure: Leasehold 88 years remain on the lease
Service Charge: £513 per annum
Ground Rent: £10 per annum
Local Authority: Camden London Borough Council
Council Tax Band: E



Chestertons Camden & Primrose Hill Sales

99-101 Parkway
 Camden
 London
 NW1 7PP
sales.camden@chestertons.com
 020 7267 2053
chestertons.com



Gross Internal Area - 557 Sq Ft - 51.74 Sq M

Approx Gross Internal Area 557 Sq Ft - 51.74 Sq M

For Illustration Purposes Only - Not To Scale

www.goldlens.co.uk

Ref. No. 017583R

