



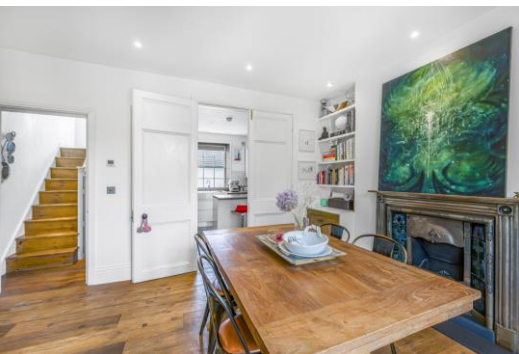
Southampton Road

London, NW5

Asking Price £1,150,000

A bright and stylish three bedroom maisonette over the upper three floors of an end of terrace Victorian house. Cleverly arranged, generously proportioned accommodation which has been renovated with an Architect designed extension and is beautifully presented with a seamless blend of period and contemporary features, including Sparuto Rustic wood flooring and under floor heating throughout. The apartment, boasting its own entrance, has a delightful bright living room and modern smart kitchen/diner. Further benefits include two terraces, a balcony and a private garden.

CHESTERTONS



Southampton Road

London, NW5

- • Three bedroom upper maisonette
- • Private entrance
- • Bright and spacious living room
- • Modern kitchen/diner
- • Two terraces and balcony
- • Private garden
- • Excellent access to Belsize Park and Chalk Farm



Ideally located for access to the entertainment, leisure and shopping facilities of Belsize Park and Kentish Town, the world-famous Camden Market as well as Primrose Hill and the tranquil delights of Hampstead Heath plus the excellent transport links to the City, West End and St Pancras International.

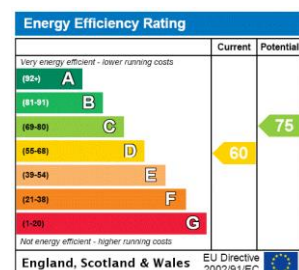
Tenure: Share of Freehold with 986 year remaining on the lease

Service Charge: TBC

Ground Rent: £0

Local Authority: Camden

Council Tax Band: D



Chestertons Camden & Kentish Town Sales

99-101 Parkway

Camden

London

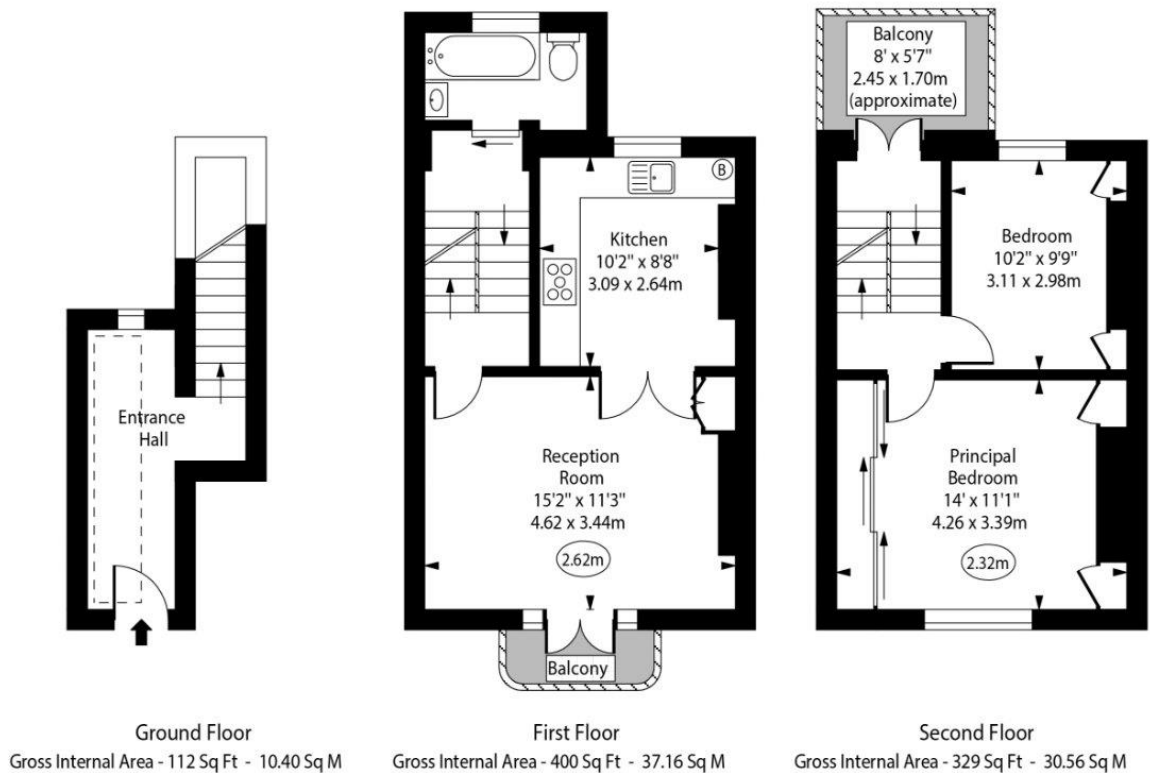
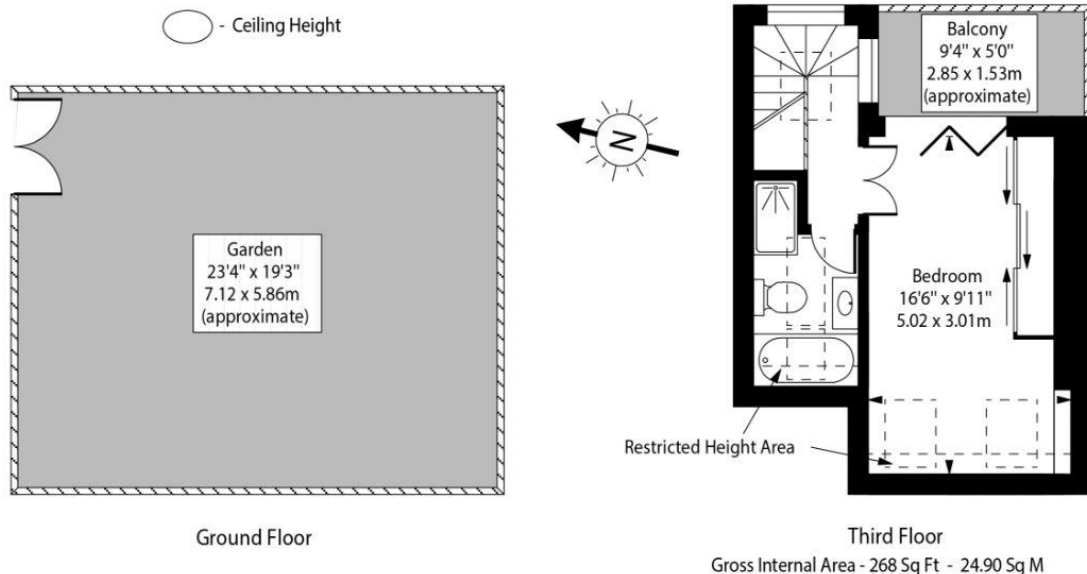
NW1 7PP

camden@chestertons.co.uk

020 7267 2053

chestertons.co.uk

Southampton Road



Approx Gross Internal Area 1093 Sq Ft - 101.54 Sq M

Approx. Floor Area Including Restricted Heights 1109 Sq Ft - 103.03 Sq M

For Illustration Purposes Only - Not To Scale