



Travers Road

London, N7

Asking Price £1,475,000

A stunning four bedroom family home in close proximity to the fantastic amenities of Finsbury Park, complete with a fantastic south-facing garden and top floor terrace. Both bright and airy, this wonderfully stylish property, measuring 1700 sq. ft, is presented in fantastic condition having undergone a full refurbishment by the current owners, seamlessly blending period features with contemporary - and that includes a new roof. Amongst its many highlights is a double reception and access to the garden from both the ground and raised ground floor. Accommodation comprises of four bedrooms, three bathrooms, double reception and a large kitchen/diner. Furthermore it offers very good storage.

CHESTERTONS



Travers Road

London, N7

- Stunning period house
- Four bedrooms
- Southerly facing garden
- Three bathrooms
- Close to excellent amenities.



Travers Road is a very central location and is situated in a quiet enclave in close proximity to Finsbury Park. The area offers fantastic transport links and a vast array of shops, cafes and restaurants. The green open space of Finsbury Park is nearby as is the excellent Sobell leisure centre.

Tenure: Freehold
Service Charge: £0
Ground Rent: £0
Local Authority: London Borough Of Camden
Council Tax Band: E

Score	Energy rating	Current	Potential
92+	A		
81-91	B		
69-80	C		
55-68	D		
39-54	E		
21-38	F		
1-20	G		
		72 C	83 B

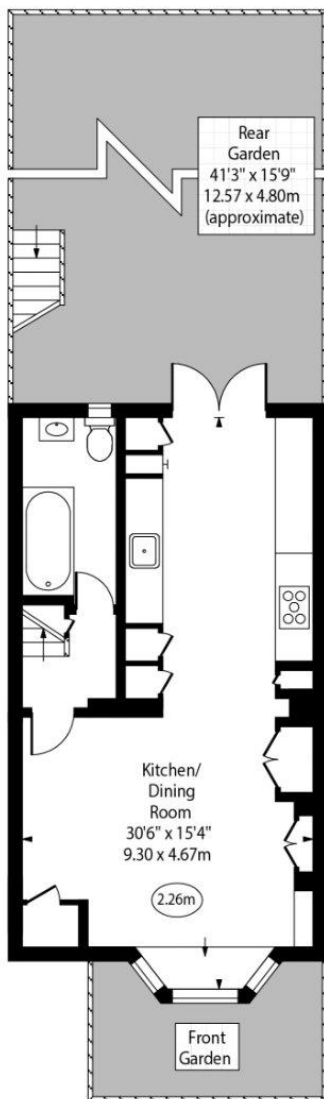
Chestertons Camden & Kentish Town Sales

99-101 Parkway
Camden
London
NW1 7PP
camden@chestertons.co.uk
020 7267 2053
chestertons.co.uk

Travers Road

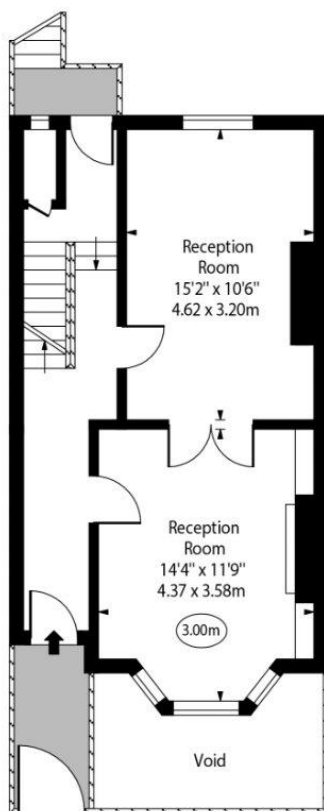


○ - Ceiling Height



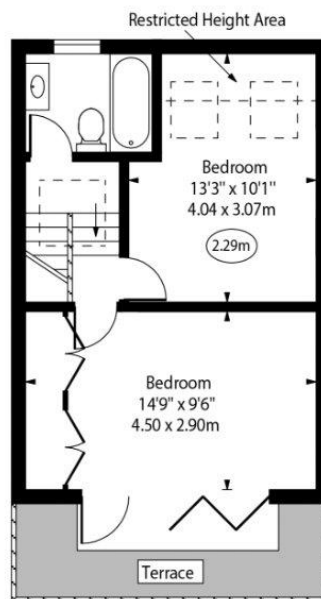
Lower Ground Floor

Gross Internal Area - 459 Sq Ft - 42.64 Sq M



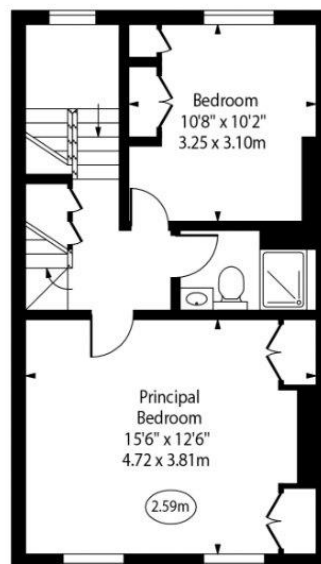
Ground Floor

Gross Internal Area - 452 Sq Ft - 41.99 Sq M



Second Floor

Gross Internal Area - 366 Sq Ft - 34.00 Sq M



First Floor

Gross Internal Area - 443 Sq Ft - 41.15 Sq M

Approx Gross Internal Area 1700 Sq Ft - 157.93 Sq M

Approx. Floor Area Including Restricted Heights 1720 Sq Ft - 159.79 Sq M

For Illustration Purposes Only - Not To Scale

