



# Travers Road

London, N7

Asking Price £1,475,000

A stunning four bedroom family home in close proximity to the fantastic amenities of Finsbury Park, complete with a fantastic south-facing garden and top floor terrace. Both bright and airy, this wonderfully stylish property, measuring 1700 sq ft, is presented in fantastic condition having undergone a full refurbishment by the current owners, seamlessly blending period features with contemporary - and that includes a new roof. Amongst its many highlights is a double reception and access to the garden from both the ground and raised ground floor. Accommodation comprises of four bedrooms, three bathrooms, double reception and a large kitchen/diner. Furthermore, it offers very good storage.



# Travers Road

## London, N7

- Stunning period house
- Four bedrooms
- Southerly facing garden
- Three bathrooms
- Close to excellent amenities.



Travers Road is a very central location and is situated in a quiet enclave in close proximity to Finsbury Park. The area offers fantastic transport links and a vast array of shops, cafes and restaurants. The green open space of Finsbury Park is nearby as is the excellent Sobell leisure centre.

---

**Tenure:** Freehold

**Service Charge:** £0

**Ground Rent:** £0

**Local Authority:** London Borough of Islington

**Council Tax Band:** E

---

*Chestertons Camden & Kentish Town Sales*

225 Kentish Town Road

London

NW5 2JU

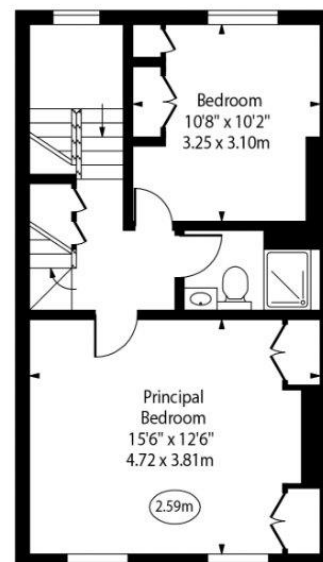
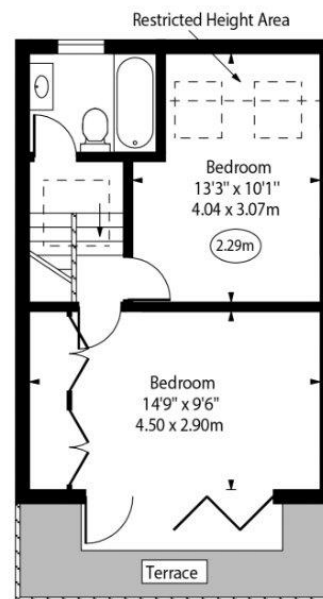
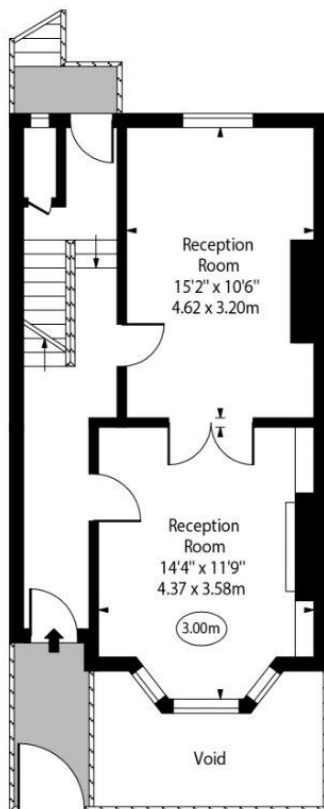
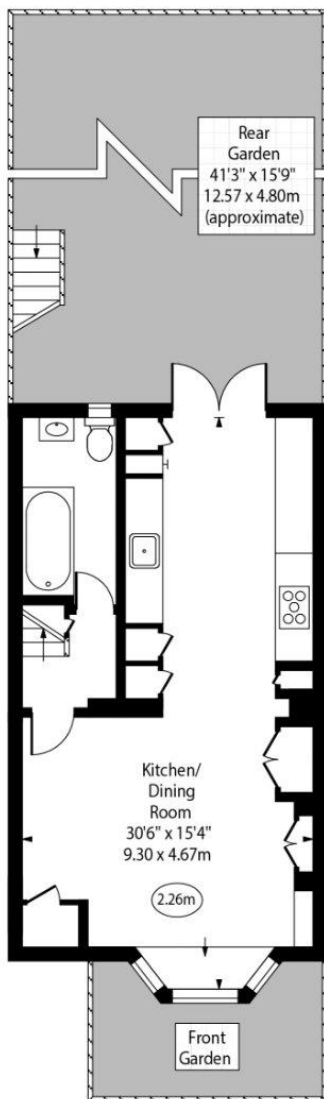
020 7267 2053

[chestertons.co.uk](https://www.chestertons.co.uk)

Travers Road



○ - Ceiling Height



Approx Gross Internal Area 1700 Sq Ft - 157.93 Sq M

Approx. Floor Area Including Restricted Heights 1720 Sq Ft - 159.79 Sq M

For Illustration Purposes Only - Not To Scale

