



# Carlow House

Carlow Street, NW1

Asking Price £750,000

This wonderful two-bedroom, two-bathroom apartment is set within a charming warehouse conversion moments from Mornington Crescent Tube Station.

Boasting high ceilings and modern fittings throughout, the property features a spacious open-plan kitchen, living, and dining area, a spacious principal bedroom benefitting from built-in wardrobes and a stylish en suite shower room. The second bedroom also includes a built-in wardrobe. There is also a large storage cupboard and ample storage throughout and a day time concierge.



# Carlow House

Carlow Street, NW1

- Excellent condition
- Moments from Mornington Crescent tube station
- Short walk to Regent's Park
- Ample storage throughout
- Concierge





Carlow House is located moments from Mornington Crescent and walking distance from Camden Underground Station and Camden Town stations providing superb transport links to central London and the City. The green open spaces of Primrose Hill and Regents Park are also nearby.

**Tenure:** Leasehold 989 years  
**Service Charge:** c£6000  
**Ground Rent:** £400  
**Local Authority:** London Borough Of Camden  
**Council Tax Band:** E

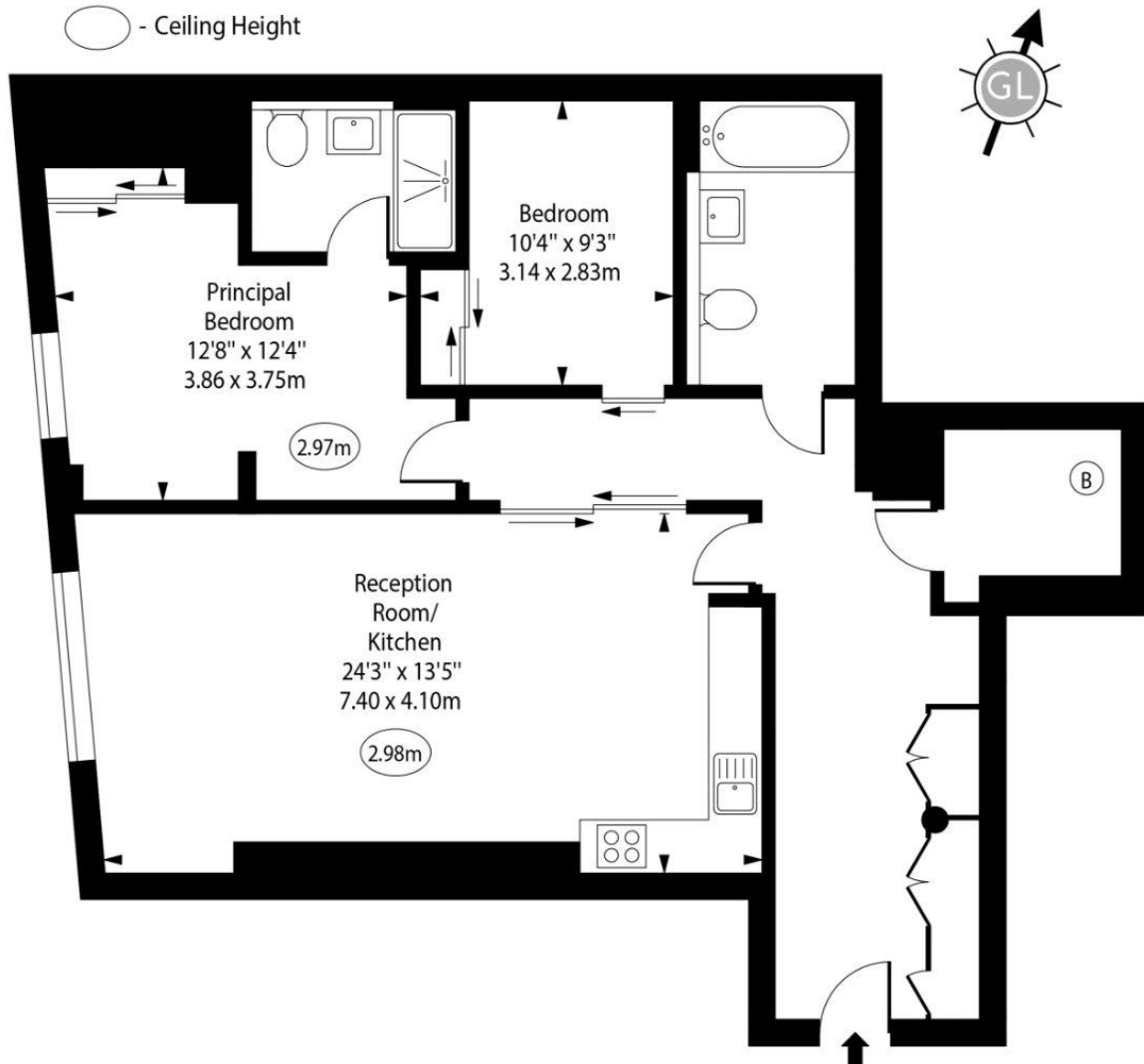
Energy Efficiency Rating		
	Current	Potential
Very energy efficient - lower running costs		
<b>A</b> (91-100)		
<b>B</b> (81-90)		
<b>C</b> (69-80)	73	73
<b>D</b> (55-68)		
<b>E</b> (39-54)		
<b>F</b> (21-38)		
<b>G</b> (1-20)		
Not energy efficient - higher running costs		
England, Scotland & Wales EU Directive 2002/91/EC		

### Chestertons Camden & Kentish Town Sales

99-101 Parkway  
 Camden  
 London  
 NW1 7PP  
[camden@chestertons.co.uk](mailto:camden@chestertons.co.uk)  
 020 7267 2053  
[chestertons.co.uk](http://chestertons.co.uk)

# Carlow House, Carlow Street

○ - Ceiling Height



Ground Floor

Gross Internal Area - 948 Sq Ft - 88.07 Sq M

Approx Gross Internal Area      948 Sq Ft - 88.07 Sq M

For Illustration Purposes Only - Not To Scale

[www.goldlens.co.uk](http://www.goldlens.co.uk)

Ref. No. 026907J

