



Mornington Crescent

London, NW1

Starting offers £680,000

Being Sold via Secure Sale. Terms & Conditions apply.

Starting offers £680,000

A spacious split level three bedroom apartment complete with a south facing rear garden.

Situated in the iconic Mornington Crescent, this charming property needs some updating but it has the potential to be a wonderful home. It boasts three bedrooms, a spacious reception room, family bathroom plus separate WC and kitchen with steps down to the rear garden.

CHESTERTONS



Mornington Crescent

London, NW1

- Three bedrooms
- Bathroom plus WC
- Rear garden
- Chain free
- Great location



Mornington Crescent is very well located to take advantage of the excellent amenities of both Camden and Mornington Crescent. Access into the West End of London is very straightforward and the green open spaces of Regent's Park are in close proximity.

Tenure: Leasehold with 88 years remaining on the lease

Service Charge: £780 per annum

Ground Rent: TBC

Local Authority: London Borough Of Camden

Council Tax Band: D

Energy Efficiency Rating		
	Current	Potential
Very energy efficient - lower running costs		
(92-100) A		
(81-91) B		
(69-80) C	69	80
(55-68) D		
(39-54) E		
(21-38) F		
(1-20) G		
Not energy efficient - higher running costs		
England, Scotland & Wales		EU Directive 2002/91/EC

Chestertons Camden & Kentish Town Sales

99-101 Parkway

Camden

London

NW1 7PP

camden@chestertons.co.uk

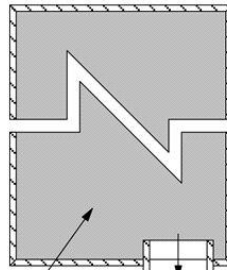
020 7267 2053

chestertons.co.uk

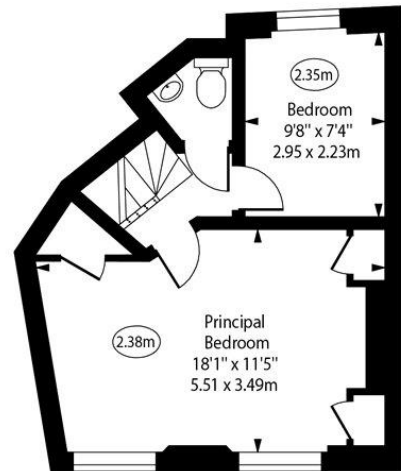
Mornington Crescent



○ - Ceiling Height

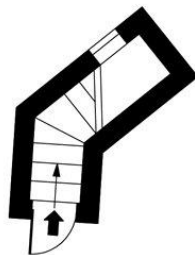


Garden
33'6" x 10'11"
10.20 x 3.33m
(approximate)



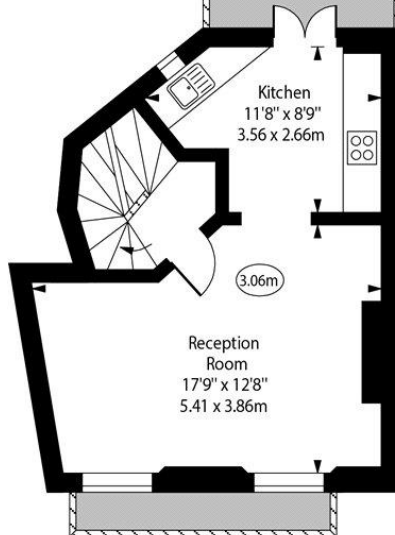
Third Floor

Gross Internal Area - 325 Sq Ft - 30.19 Sq M



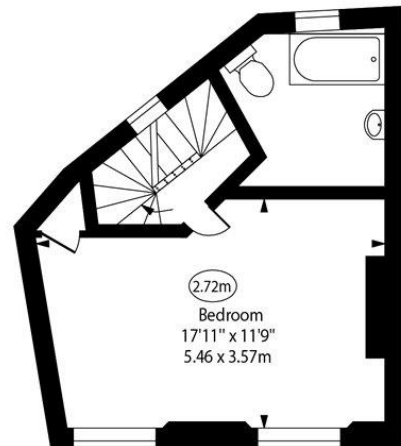
Ground Floor
Entrance

Gross Internal Area - 18 Sq Ft - 1.67 Sq M



First Floor

Gross Internal Area - 338 Sq Ft - 31.40 Sq M



Second Floor

Gross Internal Area - 305 Sq Ft - 28.33 Sq M

Approx Gross Internal Area 986 Sq Ft - 91.60 Sq M

For Illustration Purposes Only - Not To Scale
www.goldlens.co.uk
Ref. No. 019809R

