



Royal College Street

Camden, NW1

Offers in Excess Of £400,000

A one double bedroom apartment situated in a period building moments from both Camden and Kentish Town station. This charming apartment benefits from a bright and airy reception, spacious one double bedroom, kitchen with integrated appliances and a family bathroom.



Royal College Street

Camden, NW1

- Great Location
- One Bedroom
- Close To Camden & Kentish Town
- Chain Free
- Top Floor



Royal College Street is very centrally located and ideally placed for access to Kings Cross and Camden and the excellent amenities associated with this vibrant and lively part of London. The flat is also in the catchment area for Camden School for Girls.

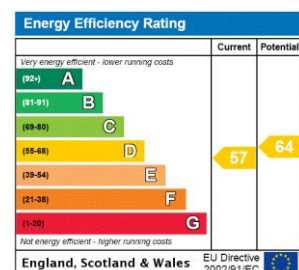
Tenure: Leasehold with 105 remaining.

Service Charge: £771 per annum

Ground Rent: £10 per annum

Local Authority: Camden

Council Tax Band: C



Chestertons Camden & Kentish Town Sales

99-101 Parkway

Camden

London

NW1 7PP

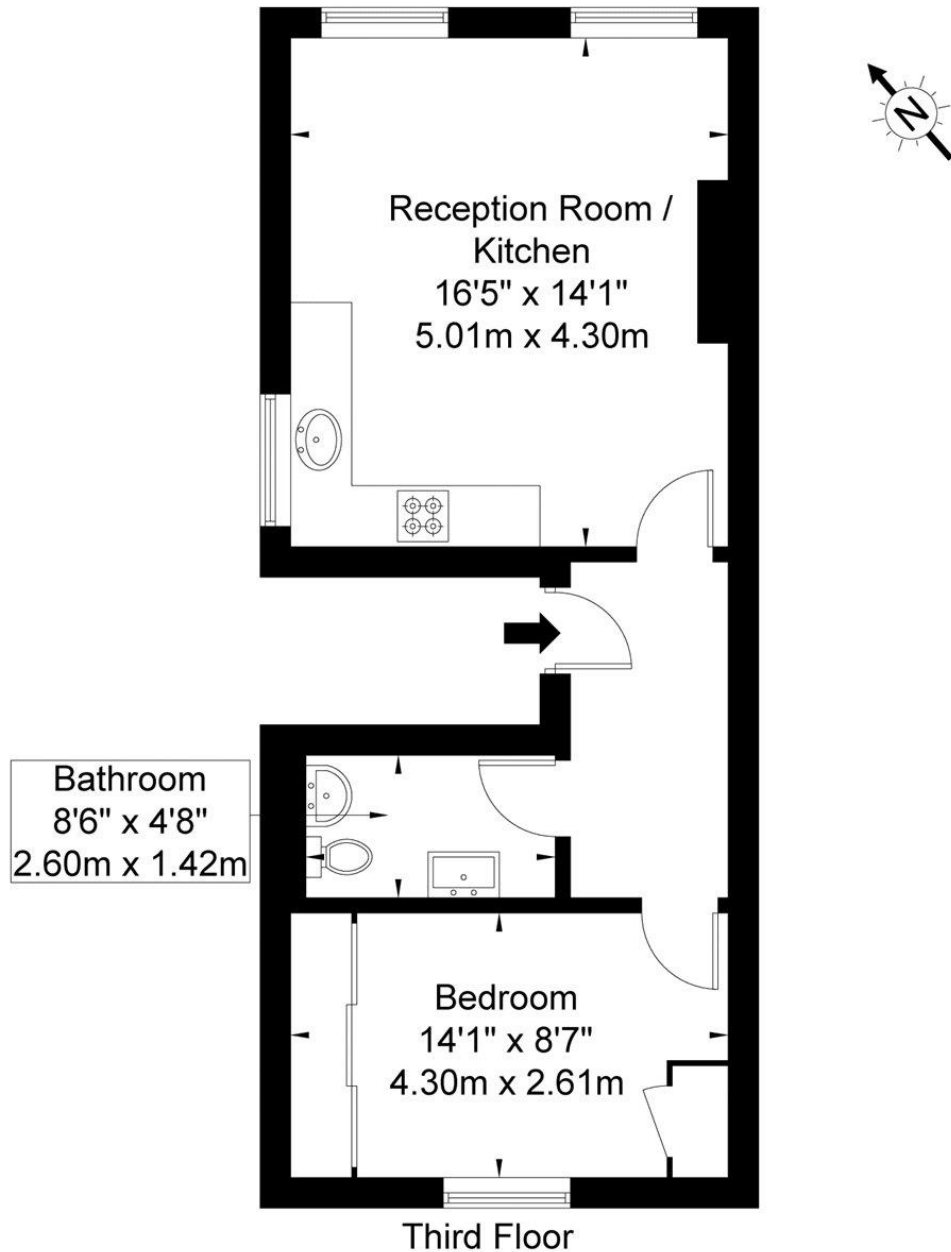
camden@chestertons.co.uk

020 7267 2053

chestertons.co.uk

Royal College Street London NW1 9LT

Approx. Gross Internal Area = 42.5 sq m / 457 sq ft



Ref

Copyright THE **BLÉU** PLAN

Disclaimer : Floor plan measurements are approximate and are for illustrative purposes only
While we do not doubt the floor plan accuracy and completeness, you or your advisors should
conduct a careful, independent investigation of the property in respect of monetary valuation

