



Whittlebury Mews East

London, NW1

Asking Price £885,000

An exceptional two bedroom ground floor apartment nestled within a secure gated development, discreetly situated just behind Gloucester Avenue in the heart of Primrose Hill Village. This recently constructed residence features a spacious open-plan living area with stylish kitchen and integrated appliances, two double bedrooms (one of which has ample built-in storage) and a well-appointed family bathroom. There is also a private and well maintained walled garden.



Whittlebury Mews East

London, NW1

- Excellent Location
- Two Bedrooms
- Great Condition
- Gated Development
- Close To Primrose Hill



Whittlebury Mews East is situated just off Gloucester Avenue, a pleasant residential area close to the shops, cafes and restaurants of Regent's Park Road. Chalk Farm Underground Station (Northern Line) is within walking distance providing easy access to the city and greater London via the underground network.

Tenure: Leasehold with 114 years remaining.

Service Charge: £200 per annum

Ground Rent: TBC

Local Authority: London Borough Of Camden

Council Tax Band: E

Energy Efficiency Rating		
	Current	Potential
Very energy efficient - lower running costs		
A (91-100)		
B (81-90)		
C (69-80)	82	84
D (55-68)		
E (39-54)		
F (21-38)		
G (1-20)		
Not energy efficient - higher running costs		
England, Scotland & Wales		EU Directive 2002/91/EC

Chestertons Camden & Kentish Town Sales

99-101 Parkway

Camden

London

NW1 7PP

camden@chestertons.co.uk

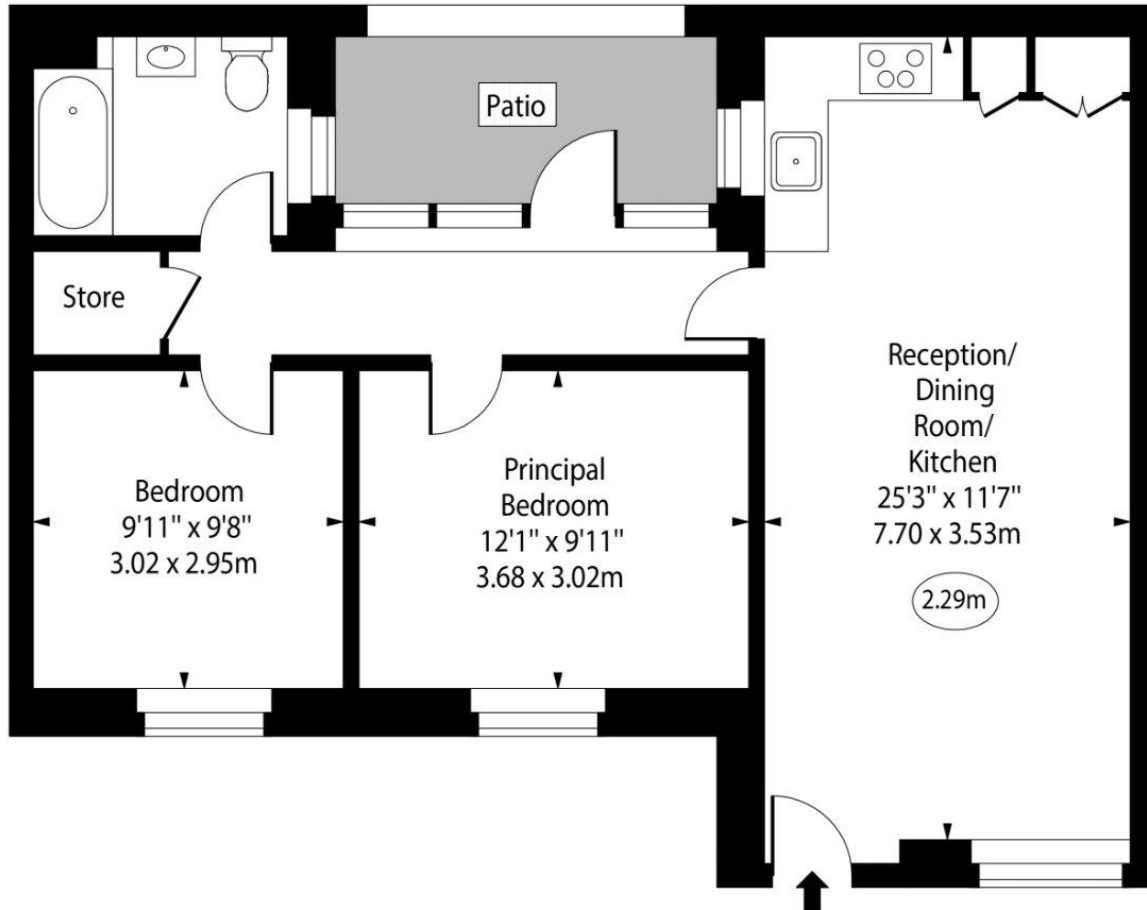
020 7267 2053

chestertons.co.uk

Whittlebury Mews East



○ - Ceiling Height



Ground Floor

Gross Internal Area - 672 Sq Ft - 62.43 Sq M

Approx Gross Internal Area 672 Sq Ft - 62.43 Sq M

For Illustration Purposes Only - Not To Scale

www.goldlens.co.uk

Ref. No. 026047K

