



Darwin Court

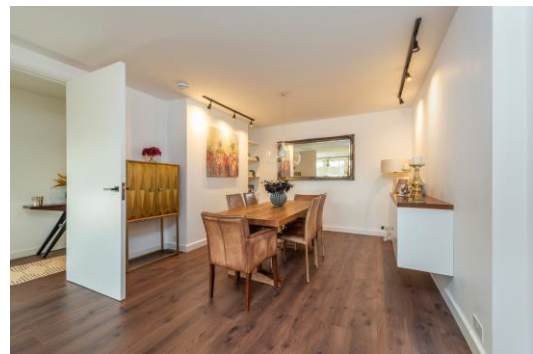
Gloucester Avenue, NW1

Asking Price £1,200,000

A stylish and laterally spacious apartment on the third floor of a well-located and well-maintained apartment, in very close proximity to Regent's Park.

Measuring 1142sq ft, this wonderful property boasts two double bedrooms, two bathrooms and excellent entertaining space in the form of a double reception.

Complete with a southerly-facing balcony and underground allocated parking.



Darwin Court

Gloucester Avenue, NW1

- Being sold chain-free
- Two double bedrooms
- Off-street parking - allocated underground
- Lift access
- Very good condition
- Southerly-facing balcony



Darwin Court is found on the ever-popular Gloucester Avenue and is very well located to take advantage of the excellent amenities of both Primrose Hill and Camden Town. The green open spaces of Regents Park and Primrose Hill are in close proximity.

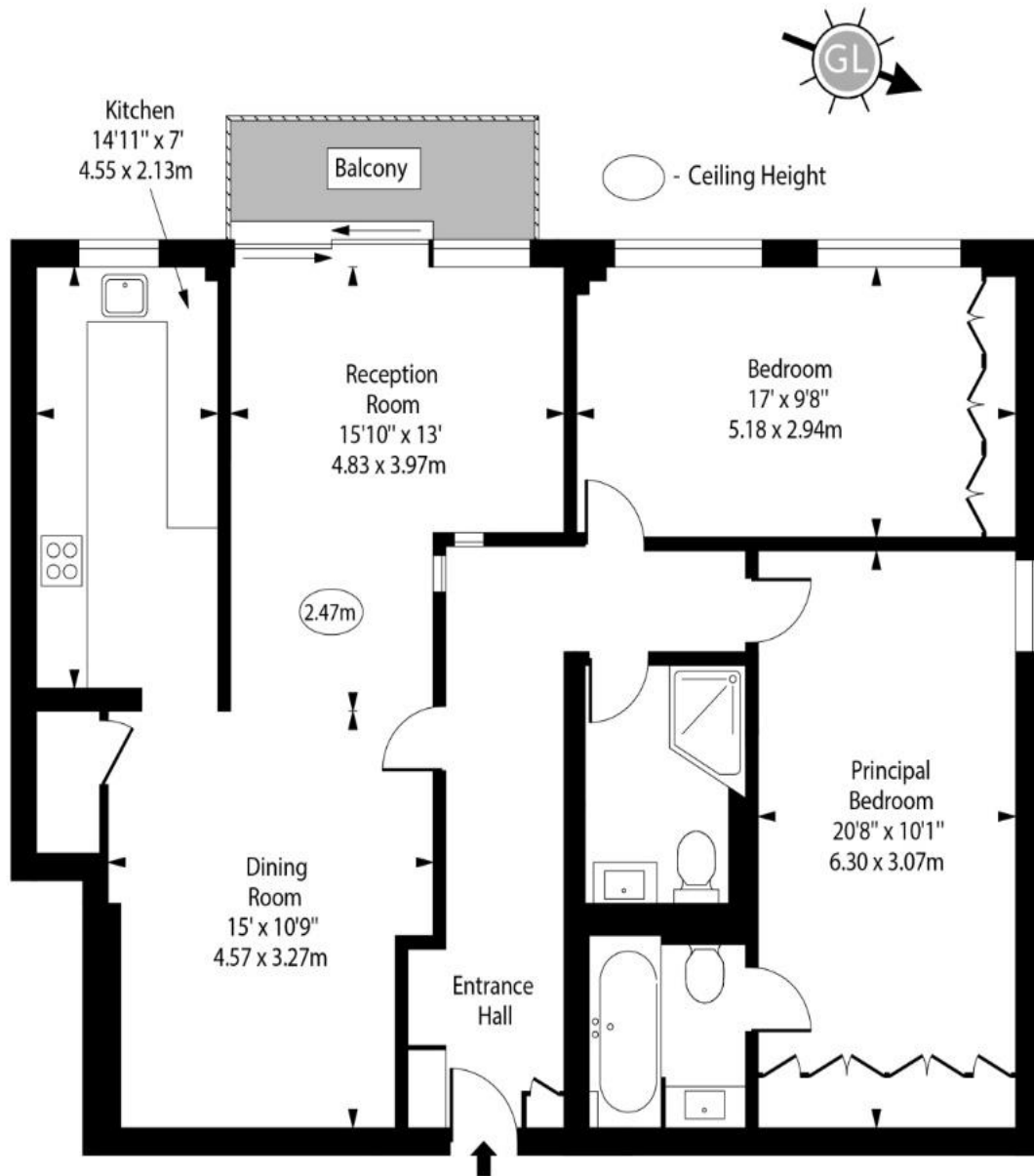
Tenure: Leasehold with 94 years remaining
Service Charge: Approx - £10,000 per annum
Ground Rent: TBC
Local Authority: London Borough of Camden
Council Tax Band: F

Energy Efficiency Rating		
	Current	Potential
Very energy efficient - lower running costs		
A (92-100)		
B (81-91)	83	85
C (69-80)		
D (55-68)		
E (39-54)		
F (21-38)		
Not energy efficient - higher running costs		
G (1-20)		
England, Scotland & Wales		EU Directive 2002/91/EC

Chestertons Camden & Kentish Town Sales

99-101 Parkway
Camden
London
NW1 7PP
camden@chestertons.co.uk
020 7267 2053
chestertons.co.uk

Darwin Court



Third Floor

Gross Internal Area - 1142 Sq Ft - 106.09 Sq M

Approx Gross Internal Area 1142 Sq Ft - 106.09 Sq M

For Illustration Purposes Only - Not To Scale

www.goldlens.co.uk

Ref. No. 022489J

