



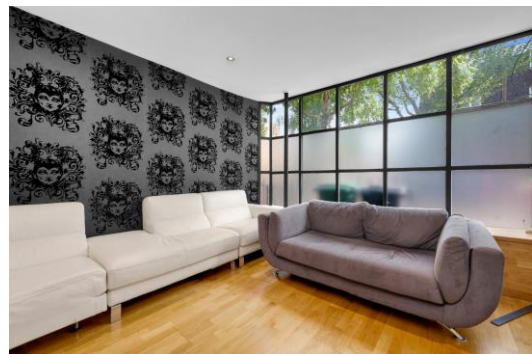
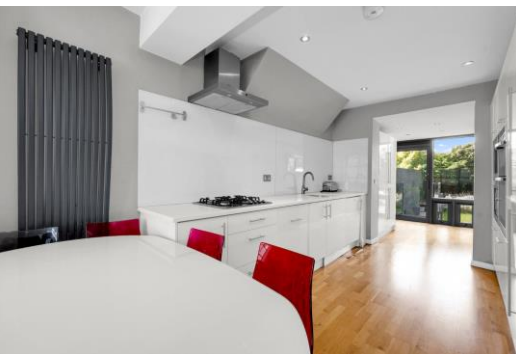
Royal College Street

London, NW1

Asking Price £775,000

Set across the ground and lower ground floors of a charming period building, this two double bedroom apartment, with an additional study, offers stylish and versatile living. The property boasts a spacious open-plan living, kitchen, and dining area on the ground floor, leading to a private garden accessible from both the study and kitchen. The property, in excellent condition throughout, is sold chain-free and combines contemporary comfort with timeless appeal.

CHESTERTONS



Royal College Street

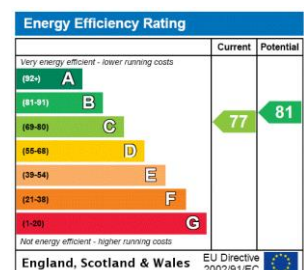
London, NW1

- Excellent Location
- Two Bedrooms
- Additional Study
- Private Garden
- Chain Free



Royal College Street is very centrally located and ideally placed for access to Kings Cross and Camden and the excellent amenities associated with this vibrant and lively part of London. The flat is also in the catchment area for Camden School for Girls.

Tenure: Share of Freehold with a lease of 972 years remaining
Service Charge: Ad Hoc - Building Insurance - £780 per annum.
Ground Rent: £0
Local Authority: Camden
Council Tax Band: E



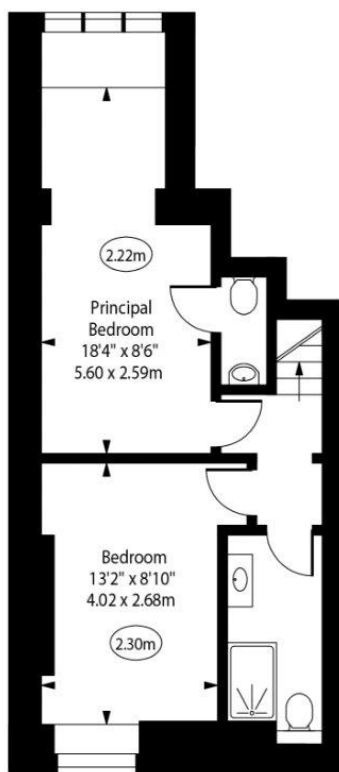
Chestertons Camden & Kentish Town Sales

99-101 Parkway
Camden
London
NW1 7PP
camden@chestertons.co.uk
020 7267 2053
chestertons.co.uk

Royal College Street

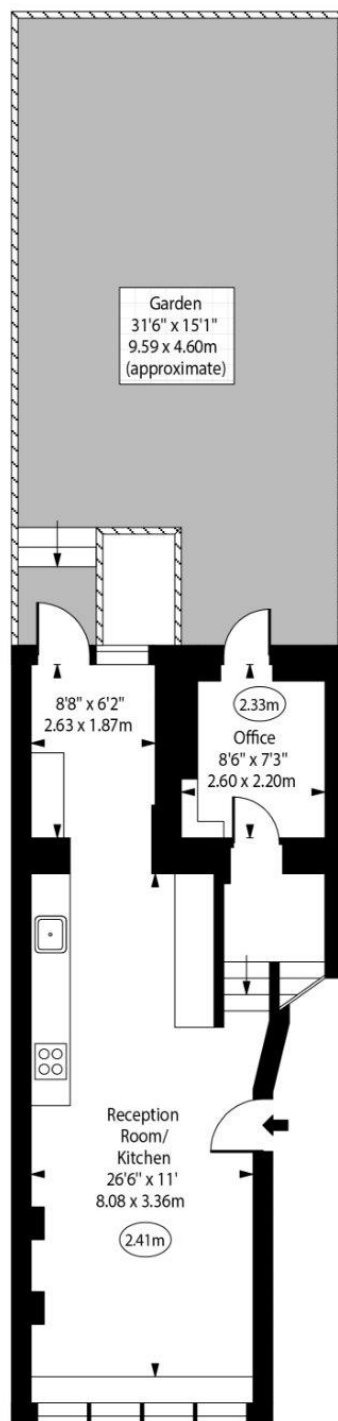


○ - Ceiling Height



Lower Ground Floor

Gross Internal Area - 395 Sq Ft - 36.70 Sq M



Ground Floor

Gross Internal Area - 473 Sq Ft - 43.94 Sq M

Approx Gross Internal Area

868 Sq Ft - 80.64 Sq M

For Illustration Purposes Only - Not To Scale
www.goldlens.co.uk
Ref. No. 026374R

