



# Gloucester Crescent

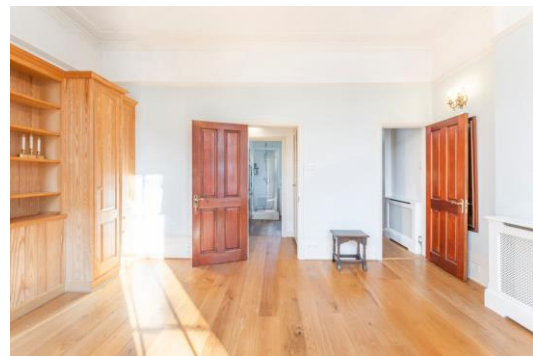
London, NW1

Offers in Excess of £425,000

A bright studio apartment located on the first floor of a charming Grade II listed building. The property boasts lots of character and period features such as large sash windows and a Juliet balcony that adds a stylish touch. While the property could benefit from modernisation, it's a fantastic opportunity to put your own stamp on a property with great potential and classic charm.

**CHESTERTONS**





# Gloucester Crescent

## London, NW1

- Prime Location
- Potential To Modernise
- First Floor
- Close to Regents Park
- Chain Free





The property is perfectly positioned for all the amenities located in the area and open green spaces of Primrose Hill and Regents Park, alongside an array of quality independent shops, cafes, restaurants and bars in Camden Town. Camden Town Station (Northern Line) is 0.3 miles, Camden Road Station (London Overground Line) is 0.5 miles.

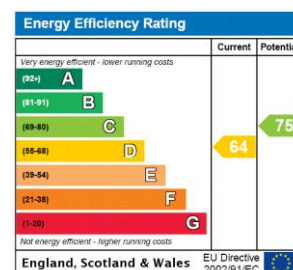
**Tenure:** Share of Freehold with 975 years remaining.

**Service Charge:** Ad Hoc

**Ground Rent:** £0

**Local Authority:** London Borough Of Camden

**Council Tax Band:** D



### *Chestertons Camden & Kentish Town Sales*

99-101 Parkway

Camden

London

NW1 7PP

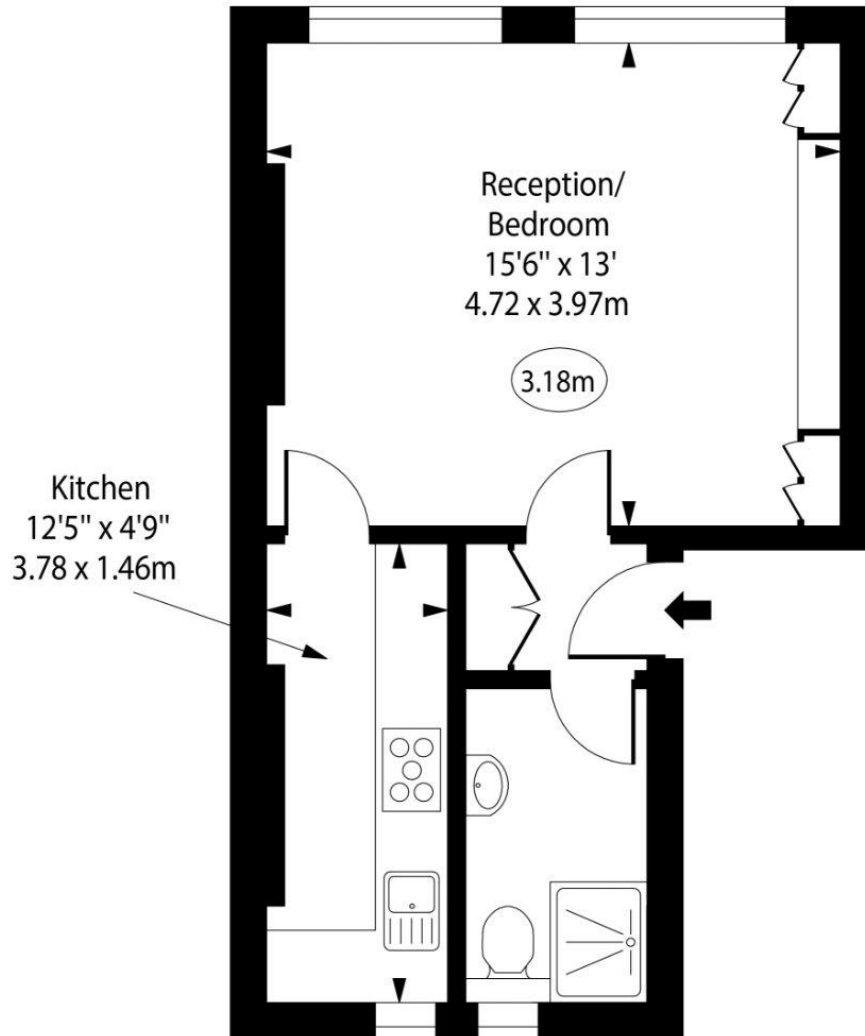
camden@chestertons.co.uk

020 7267 2053

[chestertons.co.uk](https://www.chestertons.co.uk)

# Gloucester Crescent

○ - Ceiling Height



## First Floor

Gross Internal Area - 338 Sq Ft - 31.40 Sq M

Approx Gross Internal Area      338 Sq Ft - 31.40 Sq M

For Illustration Purposes Only - Not To Scale

[www.goldlens.co.uk](http://www.goldlens.co.uk)

Ref. No. 026338J

