



Camden Mews

London, NW1

Asking Price £1,650,000

Located on the second longest mews in London sits this spacious, four double bedroom mews house benefitting from off street parking, a front garden and a large courtyard garden to the rear. Spanning approximately 1668 sq. ft over two floors, the property has been modernised and maintained by the current owners whilst retaining many of its original features. The ground floor is a large, open plan area that comprises a bright, L-shaped living space, dining room and spacious lounge all featuring original parquet floors. There is a separate U-shaped kitchen looking out onto the Mews. Original aluminium sliding doors provide access to a spacious secluded courtyard garden, via the dining room. There is also a guest W/C.



Camden Mews

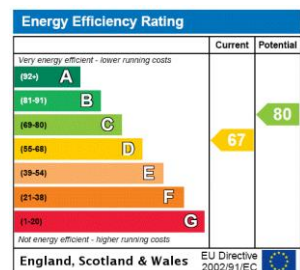
London, NW1

- Four Double Bedrooms
- Off Street Parking
- Excellent Location
- Large Courtyard Garden
- Lateral Living



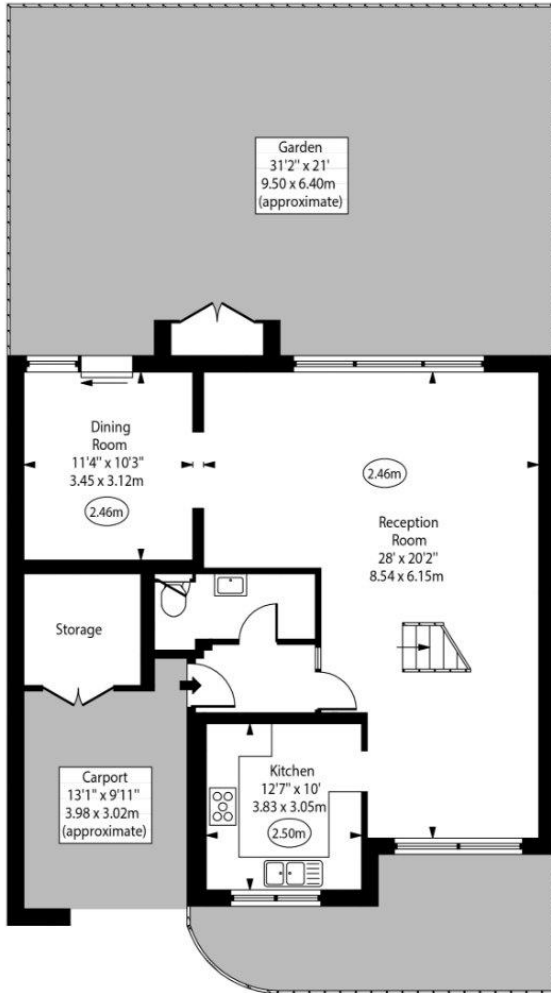
Upstairs, there are four double bedrooms, three of which feature built-in storage and a family bathroom. The principal bedroom benefits from an ensuite bathroom, whilst the main family athroom can also be accessed via bedroom two. Additional features include a carport and ample storage both internally & externally. Camden Mews, situated in the Camden Square Conservation area, is a desirable, charming cobbled street centrally located with good access to the many amenities of Camden, Kings Cross and Kentish Town with the delights of Hampstead Heath and Regents Park close to hand. Camden School for Girls is a short walk away.

Tenure: Freehold
Service Charge: £0
Ground Rent: £0
Local Authority: Camden
Council Tax Band: G

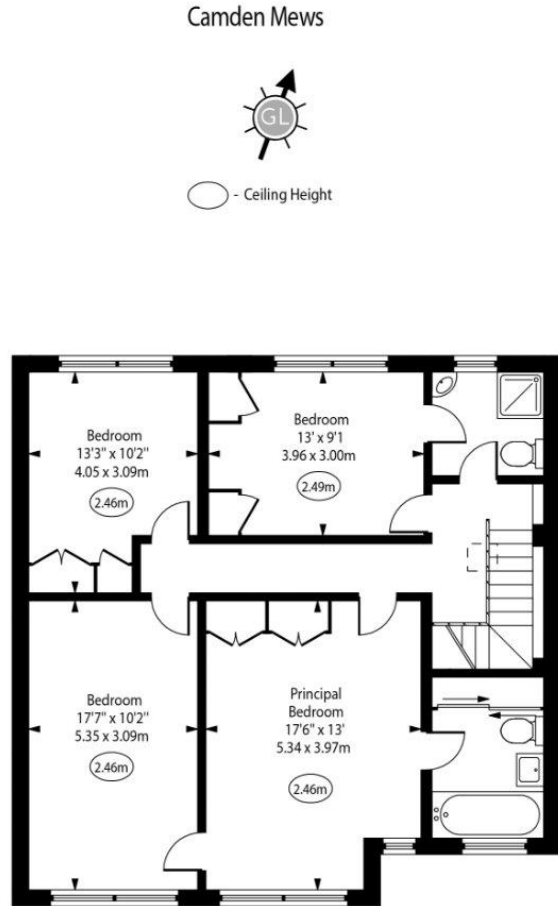


Chestertons Camden & Kentish Town Sales

99-101 Parkway
 Camden
 London
 NW1 7PP
 camden@chestertons.co.uk
 020 7267 2053
 chestertons.co.uk



Ground Floor
Gross Internal Area - 735 Sq Ft - 68.28 Sq M



First Floor
Gross Internal Area - 933 Sq Ft - 86.68 Sq M

Approx Gross Internal Area 1668 Sq Ft - 154.96 Sq M

(Excluding Storage)

For Illustration Purposes Only - Not To Scale
www.goldlens.co.uk
Ref. No. 025984R

Camden Mews



○ - Ceiling Height

