



# Gilbey House

Jamestown Road, NW1

Asking Price £525,000

A very spacious and stylish one bedroom apartment on the 2nd floor (with lift) of this sought-after listed building in the heart of Camden Town.

Accommodation comprises of a spacious reception, fully fitted kitchen, bathroom, large bedroom with ample storage. Gilbey House is a converted gin distillery and is a desirable block. It benefits from having a porter, sauna and gym. Being sold chain-free.



# Gilbey House

Jamestown Road, NW1

- Purpose built apartment
- Spacious reception
- Located in the heart of Camden Town
- Porter, sauna & gymnasium
- Chain-free



Gilbey House is located on Jamestown Road, which is the perfect location to explore the hustle and bustle of Camden or the tranquility of Regent's Park and Primrose Hill. Both are in close proximity.

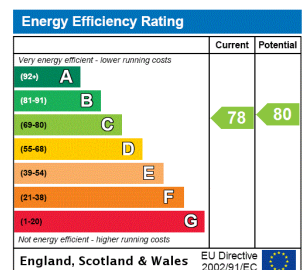
**Tenure:** Leasehold with a lease of 95 years remaining.

**Service Charge:** £4922 per annum.

**Ground Rent:** £100 per annum.

**Local Authority:** London Borough Of Camden

**Council Tax Band:** F



### Chestertons Camden & Kentish Town Sales

99-101 Parkway

Camden

London

NW1 7PP

camden@chestertons.co.uk

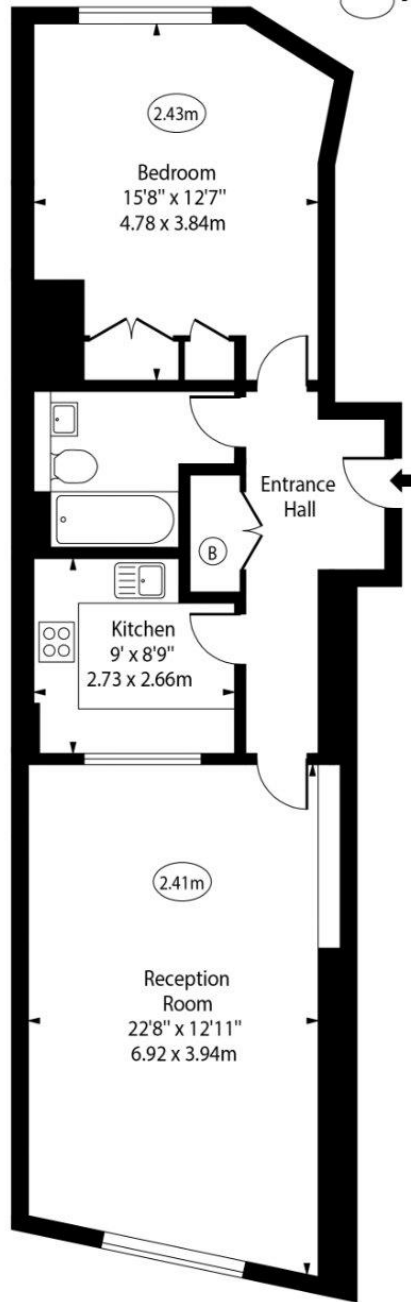
020 7267 2053

chestertons.co.uk

Gilbey House,  
Jamestown Road



○ - Ceiling Height



Second Floor

Gross Internal Area - 732 Sq Ft - 68.00 Sq M

Approx Gross Internal Area      732 Sq Ft - 68.00 Sq M

For Illustration Purposes Only - Not To Scale

[www.goldlens.co.uk](http://www.goldlens.co.uk)

Ref. No. 025971J

