



Newlyn

Plender Street, NW1

Asking Price £270,000

A studio flat set in a well maintained block within close proximity to Camden, Kings Cross and Mornington Crescent. The property offers a bright studio room, separate kitchen and bathroom and has access to a communal garden.



Newlyn

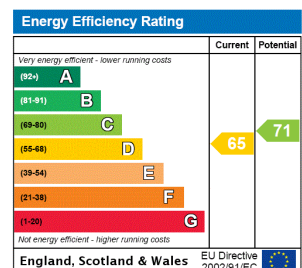
Plender Street, NW1

- Studio Apartment
- Excellent Location
- Communal Garden
- Bathroom
- Separate Kitchen



The apartment is well located for all that Mornington Crescent and Camden has to offer and is in easy reach of Granary Square with a great choice of bars and eateries. Transport is excellent with Mornington Crescent and Camden Town underground stations, great bus links with St Pancras International nearby.

Tenure: Leasehold 101 years 6 months
Service Charge: £2000 includes heating and hot water
Ground Rent: TBC
Local Authority: London Borough Of Camden
Council Tax Band: B

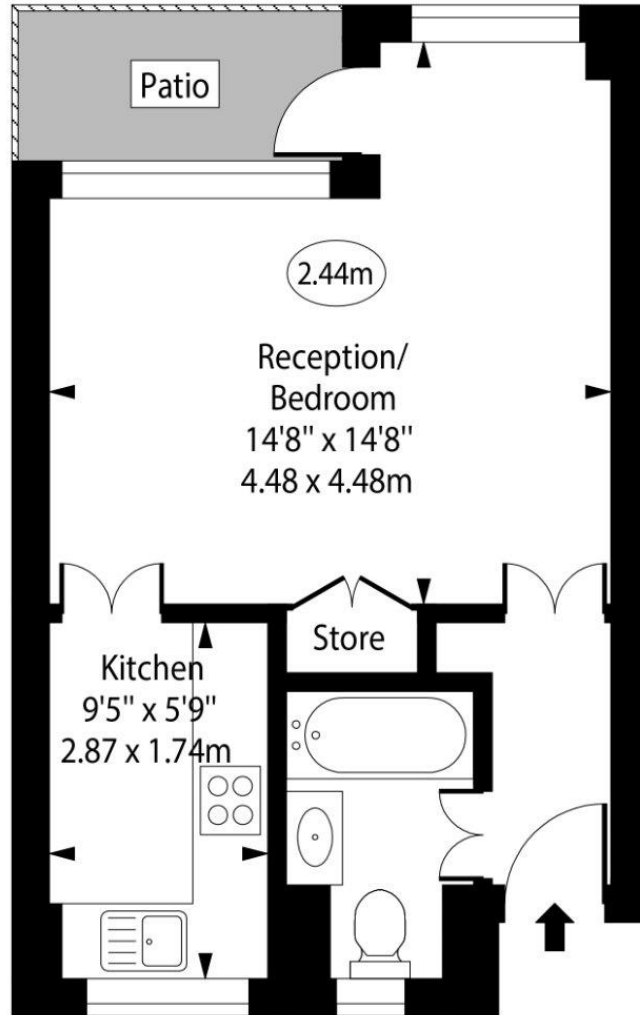
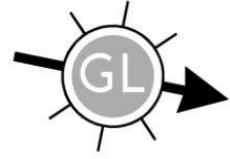


Chestertons Camden & Kentish Town Sales

99-101 Parkway
 Camden
 London
 NW1 7PP
 camden@chestertons.co.uk
 020 7267 2053
 chestertons.co.uk

Newlyn, Plender Street

○ - Ceiling Height



Ground Floor

Gross Internal Area - 318 Sq Ft - 29.54 Sq M

Approx Gross Internal Area 318 Sq Ft - 29.54 Sq M

For Illustration Purposes Only - Not To Scale

www.goldlens.co.uk

Ref. No. 025360J

